

Welcome

Dear colleagues and distinguished guests,

It is our great pleasure, on behalf of ourselves, the Rectorate and the University of Bonn, to welcome you all to the Federal City of Bonn for this year's annual Tropentag, an interdisciplinary conference that brings together a vibrant international community. Tropentag connects researchers, practitioners, policymakers and students from across the globe, while connecting different disciplines and perspectives, fostering a holistic understanding of the complex environmental and societal challenges facing our planet.

As a University of Excellence with a strong international profile, the University of Bonn is deeply committed to addressing such challenges through global cooperation in research and education. We are particularly proud of ZEF's role in advancing this goal as their work deepens our connections with the global research community, particularly in the UN-designated Global South, and contributes to our reputation as a leader in development research. Their research projects are grounded in partnerships with local communities, reflecting a deep commitment to mutual learning and sustainable solutions.

This dedication is perfectly aligned with the University's broader vision of ensuring that we not only produce knowledge, but that we apply and share it in ways that benefit communities worldwide. We are convinced that true innovation and progress are achieved through equitable, cross-regional collaboration. This commitment is also reflected in our strong engagement with the agencies of the United Nations and other international organizations headquartered here in Bonn.

We encourage all participants of Tropentag to engage in open dialogue and to build new bridges of cooperation beyond disciplinary and national boundaries. Together, we can contribute to global efforts to build a more sustainable and just world. We wish you a pleasant stay here at the University and in the International City of Bonn.

With warm regards,

Prof. Dr. Birgit Ulrike Münch, Vice Rector for International Affairs, University of Bonn

Prof. Dr. Ilona Grunwald, Vice Rector for Research and Career Development, University of Bonn



Prof. Münch



Prof. Grunwald

Dear participants of the Tropentag 2025 conference,

It is our great pleasure to welcome you to *Tropentag 2025*. We are delighted that you are taking part in this important gathering for three days of thoughtful exchange, interdisciplinary engagement, and collaboration.

This year's conference brings together **around 1,000 participants**, joining us both in person and virtually. Under the theme "*Reconciling land system changes with planetary health*", the conference will explore how agricultural development, food production, and environmental stewardship can be pursued together.

Tropentag's strength lies in your active participation. Whether you are presenting research, contributing to discussions, or listening and reflecting, your engagement shapes the energy, depth, and impact of this event. We are pleased to see many early-career researchers among you, whose insights and fresh perspectives help drive forward inclusive and sustainable solutions.

Together, you will contribute across a dynamic programme comprising 24 oral presentation sessions, streamed live and open to both in-person and remote participation, 20 poster sessions and 13 online sessions. We will also host 27 workshops on Tuesday, 9 September and Wednesday, 10 September

Our sincere thanks to our sponsors and partners for enabling this assembly—and to you, our participants, for your commitment to knowledge, innovation, and planetary well-being.

We wish you an enriching and inspiring *Tropentag 2025*, and a pleasant experience here in Bonn.

With warm regards,

On behalf of the Organizing Committee

Prof. Dr. Christian Borgemeister ZEF, University of Bonn

Prof. Dr. Mathias Becker INRES, University of Bonn



Prof. Borgemeister



Prof. Becker

Content

Overview keynote and lead papers	4
Overview of the oral presentation sessions	6
Overview of the poster & online presentation sessions.....	7
General information Good to know.....	9
Conference venue Maps of the campus	12
Side event: Pastoralism Film Festival	17
The exhibitors.....	19

Tuesday, 09.09.2025

Program overview Pre-conference workshops.....	20
--	----

Wednesday, 10.09.2025

Program overview Pre-conference workshops.....	21
Plenary session welcome addresses	23
Keynote speeches and <i>fiat panis</i> ceremony	23
Parallel oral thematic sessions I 17:00 – 18:30	27
Special events: Apéro, Pastoralist Film Festival, ATSAF meeting	30

Thursday, 11.09.2025

Program overview	31
Guided poster & online sessions P1 08:30 – 10:00.....	32
Parallel oral thematic sessions II 10:30 – 12:00.....	40
Parallel oral thematic sessions III 13:30 – 15:00	44
Parallel oral thematic sessions IV 15:30 – 17:00.....	48
Guided poster & online sessions P2 17:15 – 18:45.....	52
Special event: Conference dinner and party	60

Friday, 12.09.2025

Program overview	61
Guided poster & online sessions P3 08:30 – 10:00.....	62
Plenary session and conference review 10:30 – 12:00.....	69
Closing ceremony: photo competition and poster awards 12:00 – 13:00.....	70

Overview keynote and lead papers

Opening Session



Dr. Simeon Ehui

Director General of the International Institute of Tropical Agriculture (IITA), Nigeria and Regional Director for Africa, CGIAR

Title of presentation: Innovations for reconciling land use change with human and environmental health



Dr. Lenis Saweda Liverpool-Tasie

Michigan State University (USA)

Title of presentation: Beyond the farm: Unlocking employment and livelihoods in Africa's evolving food systems



Dr. Christian Hoffmann

University of São Paulo, School of Pharmaceutical Sciences, Brasil

Title of presentation: Exploring gut microbiome diversity and the nutrition transition in Brazil

Closing Session



Ousmane Badiane (PhD. Dr. h.c.)

Executive Chairperson of AKADEMIYA2063

Title of presentation: Remote sensing and artificial intelligence application in agriculture



Dr. Bernard Vanlauwe

Deputy Director General for Research for Development of the International Institute of Tropical Agriculture (IITA), Kenya

Title of presentation: Planetary health and farmer's livelihoods in Sub-Saharan Africa – first things first!

Invited Speakers



Dr. Fathiya Khamis

International Centre of Insect Physiology and Ecology (icipe), Nairobi, Kenya

Title of presentation: Molecular tools for sustainable management of invasive/indigenous pests for food and nutritional security in Africa



Dr. Patrick Meyfroidt

Université catholique de Louvain (UCLouvain)

Title of presentation: Tacking stock of empirical and theoretical lessons from land system science for planetary health



Dr. Claudia Ringler

International Food Policy Research Institute (IFPRI), Washington, United States

Title of presentation: Water use in agri-food systems: growing needs confronting waning supplies



Dr. Céline Termote

The Alliance of Bioversity International & CIAT, Food Environment and Consumer Behaviour, Nairobi, Kenya



Dr. Bjoern Ole Sander

International Rice Research Institute, Country Representative, Thailand

Title of presentation: Rice: A delicious future for people and planet?



Dr. Amit Kumar Srivastava

Leibniz Centre for Agricultural Landscape Research (ZALF), Müncheberg, Germany

Title of presentation: The promise and perils of AI and hybrid modelling in agriculture



Dr. Leena Tripathi
**International Institute of Tropical Agriculture (IITA), Nai-
robi, Kenya**
Title of presentation: Role of biotechnology in advancing
African agriculture for planetary health



Dr. Anthony Whitbread
International Livestock Research Institute (ILRI), Tanzania
Title of presentation: Delivering an equitable transition to
sustainable and low-emission livestock systems in low-
and middle-income countries

Overview oral presentation sessions

Wednesday, 10.09.2025

Oral presentation sessions I | 17:00 – 18:30

1d. Animal nutrition HS 2.....	27
2a. Soil health Hörsaal 3/4 [0.001/0.002]	27
2b. Water quantity and quality Hörsaal 7 [1.004]	28
3b. Agroforestry Hörsaal 2.....	28
4a. Food environments HS 4.....	28
5b. Gender, power, and access: Dynamics in ... Hörsaal 5/6 [1.001 / 1.002].....	29
6a. Digital innovations Hörsaal 1	29

Thursday, 11.09.2025

Oral presentation sessions II | 10:30 – 12:00

1b. Crop abiotic stress Hörsaal 1	40
1e. Animal production Hörsaal 3/4 [0.001/0.002]	40
4b. Sustainable food systems HS 4	41
5d. Bridging farmer innovation and digital co-design HS 2.....	41
6c. Science policy Hörsaal 5/6 [1.001 / 1.002].....	42
6d. Land system changes Hörsaal 2	42
7b. BMZ/giz session Hörsaal 7 [1.004]	42

Oral presentation sessions III | 13:30 – 15:00

1a. Crop management Hörsaal 1	44
2d. Climate change adaptation & mitigation Hörsaal 2	44

3c. Biodiversity & neglected species Hörsaal 3/4 [0.001/0.002]	45
4c. Sustainable nutrition security HS 4	45
5c. Social learning and network Hörsaal 5/6 [1.001 / 1.002]	45
6b. Development economics HS 2	46
7a. IITA session Hörsaal 7 [1.004]	47

Oral presentation sessions IV | 15:30 – 17:00

1c. Crop biotic stress Hörsaal 1.....	48
2c. Amendments & nutrient management Hörsaal 3/4 [0.001/0.002].....	48
3a. Perspectives on agroecology Hörsaal 2.....	49
3d. Rangelands and forages HS 2.....	49
4d. Food quality & processing HS 4	50
5a. Governance and local livelihoods Hörsaal 5/6 [1.001 / 1.002]	50
7c. BMLEH session Hörsaal 7 [1.004]	51

Overview poster & online presentation sessions

Thursday, 11.09.2025

Poster & Online sessions P1 | 08:30 – 10:00

1c. Biotic stress... Tent	32
1d. Animal nutrition Tent	32
2a. Soil health Tent	33
2b. Water quantity and quality Tent	34
3b. Agroforestry Tent	34
4a. Food environment Tent	35
5b. Gender, power, and access: Dynamics in land and food... Tent	36
6c. Science policy Tent.....	36
7d. DAAD Alumni Seminar 1 Tent.....	36
Online 2b./2d. Water ecology and climate change aspects	37
Online 3c. Biodiversity	38
Online 5c./5d. Integrating social learning and digital innovation.....	38
Online 3d./6d. Land use change and grazing systems	39

Poster & Online sessions P2 | 17:15 – 18:45

1b. Crop abiotic stress Tent	52
2c. Amendments & nutrient management Tent.....	52
3d. Rangelands & forage Tent.....	53
4b. Sustainable food systems Tent	54
5a. Governance and local livelihoods Tent	54

5d. Bridging farmer innovation and digital co-design Tent.....	55
6c. Science Policy Tent.....	55
6d. Land system changes Tent.....	56
Online 1a. Crop management.....	57
Online 1d/1e. Livestock management.....	57
Online 2a. Soil health.....	58
Online 4a/4b/4c/4d. Food systems and nutrition	58
Online 6a/6b. Innovation economics.....	59

Friday, 12.09.2025

Poster & Online sessions P3 | 08:30 – 10:00

1a. Crop management Tent	62
1e. Animal production Tent	62
2d. Climate change adaptation & mitigation Tent.....	63
3a. Perspectives on agroecology Tent	63
3c. Biodiversity & neglected species Tent.....	64
4c. Sustainable nutrition security Tent	64
4d. Food quality & processing Tent	65
5c. Social learning and network Tent.....	65
6b. Development economics Tent.....	66
Online 1b/1c. Online: Crop (a)biotic stress.....	66
Online 2c. Online: Amendments and nutrient management	67
Online 3b. Online: Agroforestry	67
Online 5a/5b/6c. Online: Social learning, governance and science policy	68

Good to know



Registration desk & conference office

The conference office with the registration is located in the entrance hall on the ground floor of the Hörsaalzentrum Poppelsdorf building (Friedrich-Hirzebruch-Allee 5).



Address:

Bonn University
Friedrich-Hirzebruch-Allee 5
53115 Bonn
Germany
GPS coordinates 50.726664, 7.085357
E-Mail: info@tropentag.de

Opening hours of the conference office: Tuesday – Friday between: 08:00 – 19:00

You can come here any time in case of questions or suggestions



Luggage storage

Luggage can be stored at your own risk, in the conference reception area free of charge. Please ask at the reception.



Online programme

You can find the conference programme also on the whova application: https://whova.com/portal/webapp/trope_202509/Agenda



Coffee breaks

Coffee, tea and water are available free of charge at the coffee stations located inside the tent.



Accommodation, food, sightseeing



The Tropentag team has compiled a list of hotels, restaurants and sightseeing places in and around Bonn. You can access the list (available on our website) by scanning the QR code



Lunch

Lunch can be purchased at the university canteen, the Campusmensa Poppelsdorf (CAMPO), located only 350 m distance from the tent (see Campus Poppelsdorf map below).

Please note: Payment in the Campusmensa Poppelsdorf is only possible without cash. You can pay with giro or credit card. Prices vary but usually do not exceed 7 euros per meal (excluding drinks).

Alternatively, you can find several restaurants/food trucks in the Meckenheimer Allee street, located 400 m distance from the tent.

You can also scan the QR code in this page to get some restaurant options (not all of the options listed there are close to the venue).



Any question? Do ask the persons at the registration desk or the persons wearing the Tropentag T-shirts!

Student reporters

Also this year, the TROPENTAG student reporters will be reporting live from the conference on various social media channels - TROPENTAG blog, Flickr, Instagram, YouTube, Facebook...

<http://blog.tropentag.de/>

<https://www.flickr.com/photos/tropentag/>

https://www.instagram.com/atsaf_ev/

<https://www.youtube.com/@atsaf>

<https://www.facebook.com/atsafev>

What you should know about the oral and poster presentations

Oral presentations

All oral presentations should be uploaded until 09.09.2025 23:59 to:



<https://uni-bonn.sciebo.de/s/DBHwecktnqoYzep>

In emergent cases an upload is possible at the latest 2 hours before the presentation only at the registration desk. Presentations will be accepted only as **MS Powerpoint presentations or stand-alone presentations (PDF or JPG, 16:9 aspect ratio recommended)**. In order to ensure a correct presentation, we recommend showing the presentation as a PDF. All presenters must keep the planned maximum 10 minutes of presentation time. A chairperson in each session will ensure that the time schedule is kept.

Poster & online presentations

The guided poster presentations will be held in the conference tent. The poster presenter should shortly introduce the poster / outline the main message in not more than 3 minutes; subsequently, there will be time for a short discussion. Be prepared for your poster session. Please make sure to hang your poster immediately after registration. An ID and Name will indicate the Place to hang your poster.

All online sessions can be followed via the whova application, and these sessions will also be streamed in Hörsaalzentrum Poppelsdorf.

Conference Venue

The conference venue consists of four different locations at the Campus Poppelsdorf at University of Bonn. All within five minutes walking distance from each other (see map below):

1) Tent

- Poster sessions
- Exhibitors
- Coffee breaks

2) Hörsaalzentrum Poppelsdorf

Friedrich-Hirzebruch-Allee 5, 53115 Bonn

- Reception
- Opening & Closing Plenary
- Oral sessions
- Workshops
- Exhibitors
- Film event

Rooms: Hörsaal 1, 2, 3 [0.001], 4 [0.002], 5 [1.001], 6 [1.002], 7 [0.004]

3) Außenstelle Geozentrum der Universität Bonn (HS2, HS4)

Meckenheimer Allee 176, 53115 Bonn

- Oral sessions

Rooms: HS2, HS4

4) Rotationsgebäude

Käthe-Kümmel-Straße

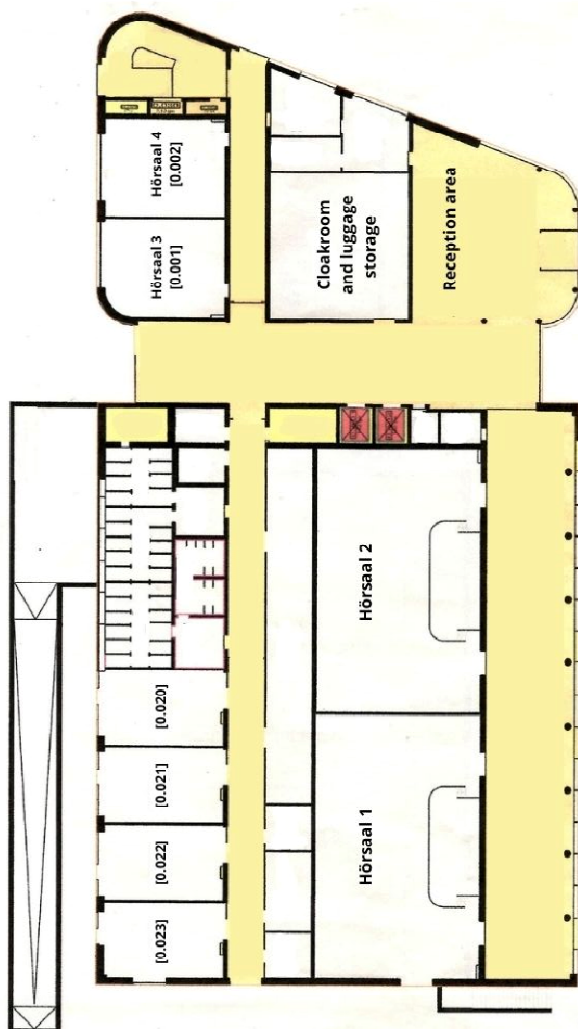
- Workshops

Rooms: 0.056, 1.051, 2.045, 2.046, 2.047, 2.050, 2.052, 3.055

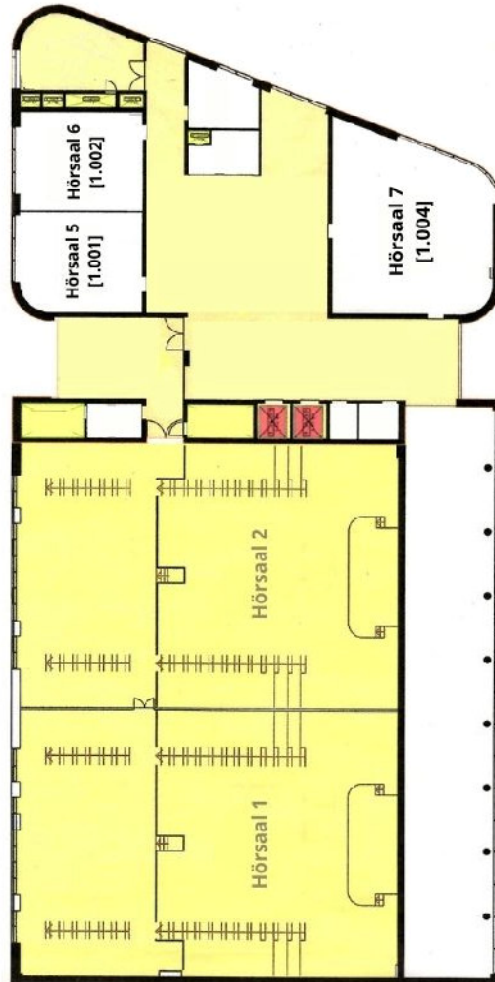
Map Campus Poppelsdorf



Hörsaalzentrum Poppelsdorf building plan – Ground floor



Hörsaalzentrum Poppelsdorf building plan – First floor



Außenstelle Geozentrum der Universität Bonn – Ground floor



Film Festival: Fourth Edition of Perspectives on Pastoralism Film Festival at Tropentag 2025 | Tuesday 09.09.2025 & Wednesday 10.09.2025 | 19:00 – 22:00 | Hörsaal 2

The *Perspectives on Pastoralism Film Festival* (www.pastoralistfilmfestival.com) returns to Tropentag, presenting a new selection of documentary films that explore the lives, knowledge, and environmental stewardship of pastoralist communities worldwide. This edition focuses on pastoralism, nature conservation, and biodiversity, contributing to the global momentum leading up to the UN International Year of Rangelands and Pastoralists (IYRP) in 2026. The film festival provides a unique opportunity to bridge science, practice, and policy through the lived experiences and perspectives of pastoralists from across the world.

The films take participants on a journey through pastoral landscapes ranging from the Hungarian pastures and the Greek mountains to the savannahs of Kenya and Chad. They capture personal stories of pastoralist men, women, and youth navigating environmental change, land-use pressures, and social transformation, while continuing to care for their herds and sustain their ecosystems. The films demonstrate how pastoralist practices and traditional ecological knowledge contribute to sustaining biodiversity and supporting the health of rangeland ecosystems.

Building on the success of earlier editions at Tropentag 2019 (Kassel), 2022 (Prague), and 2024 (Vienna), this year's film festival in Bonn will feature two screening sessions on separate days, offering a curated program of short and feature-length documentaries. Each session will be followed by interactive discussions, creating space for dialogue among researchers, practitioners, and participants on the role of pastoralism in shaping sustainable landscapes.

The Perspectives on Pastoralism Film Festival is organised on behalf of the Coalition of European Lobbies for Eastern African Pastoralism (CELEP) by DITSL (German Institute for Tropical & Subtropical Agriculture), Agrecol Association for AgriCulture & Ecology and Vétérinaires Sans Frontières (VSF) Belgium.

Program:**Tuesday 9 September 2025 - 19:00-21:00 CEST****Herd Walk - Ankit Pogula - India - 2024 - 63 min**

After seven decades of passionate herding, Neelkanth Mama's herd walk is coming to a cruel halt. In a nearby village, Vajir also struggles to continue herding his sheep, facing resistance within his own home. "No girl wants to marry a shepherd," his youngest son declares. Set against the picturesque Deccan Plateau in southern India, Herd Walk follows the resilient journeys of two Kurba shepherds. As they navigate through barricaded commons, changing climate and new aspirations, they walk to preserve a timeless universe. "The sheep is our dharma," says Vajir. The film challenges us with a question: what is life without dharma – without purpose? The sheep have often been accused of walking blindly, and the shepherd of a mere wanderer. Yet as the story unfolds, we discover that they may in fact be sustaining one of the last living links between the civil and the wild.

Wednesday 10 September 2025 - 19:00-22:00 CEST

Film title (+ link to trailer)	Duration	Country of filming	Filmmakers	Production year
Pastoralism is the future	2 min	global	CELEP	2021
An afternoon on the pasture	22 min	Hungary	Zsolt Molnár & Sándor Karácsony	2022
Indigenius Loci	12 min	Greece	Vicky Markolefa	2022
Sharing the Land	14 min	Spain	Ofelia de Pablo & Javier Zurita	2020
The Dangar Strife – An Age-Old Ecosystem under Duress	4 min	India	Siddharth Kulkarni	2023
Maasai Voices on Climate Change	10 min	Kenya	Nickson ole Kirro-korr et al.	2011
Maps for Peace	25 min	Chad	Sébastien Mesquida	2024

Total duration: 90 min

The exhibitors

You will find the exhibitors inside the conference tent.

- Federal Ministry of Food and Agriculture (BMEL) | www.bmel.de/en
- Federal Office for Agriculture and Food (BLE) | www.ble.de/en
- German Society for International Cooperation (GIZ) | <https://www.giz.de/en/html/index.html>
- Federal Ministry for Economic Cooperation and Development (BMZ) | <https://www.bmz.de/en>
- German Academic Exchange Service (DAAD) | <https://www.daad.de/en/>
- International Institute of Tropical Agriculture (IITA) | <https://www.iita.org/>
- German Research Foundation (DFG) | <https://www.dfg.de/en>

Programme overview Tuesday 09.09.2025

13:30-19:00 *Pre-registration of participants* Hörsaalzentrum Poppelsdorf

14:00-18:00 Pre-conference workshops

- W1: closed workshop - ATSAF Academy Networking Event 2025 | Hörsaal 1
- W2: Biodiversity and smallholder livelihood in coffee and cocoa production – synergies, trade-offs and potential solutions | Room 1.051
- W3: Hy4Cast – Hybrid modelling leveraging Artificial Intelligence for fine-scale crop yield forecasts | Room 2.045
- W4: Computational Land System Analysis (CoLSA): (Big) Data-driven approaches to support decision-processes in the Anthropocene | Room 2.046
- W5: Assessing malnutrition progress amid global, socio-economic, and agricultural changes in sub-Saharan Africa: Regional and country-level insights | Room 2.047
- W6: Women's voice and leadership in decision making: challenges and solutions | Room 2.050
- W7: Lessons learnt and Opportunities for international cooperation in sustainable and climate-resilient agriculture: Perspectives from BMLEH international projects in South America, Europe, and Africa | Room 2.052
- W8: Tipping points in social-ecological systems: Challenges and insights across diverse contexts of land management | Room 3.055
- W9: Sustainable solutions for climate-resilient agriculture | Hörsaal 4 [0.002]
- W10: Diversification of the food chain for food security in Africa | Hörsaal 6 [1.002]
- W11: Making better photos of research in and on landscapes and agriculture | Hörsaal 3 [0.001]
- W27: Scaling in Space: A CGIAR Serious Game on Innovation Portfolios | Seminarraum 4 [0.023]

15:30-16:00 *Coffee and tea break* *Tent*

19:00-22:00 *Side event: Fourth Edition of Perspectives on Pastoralism Film Festival at TT25* *Hörsaal 2*
Theme: Pastoralism at the heart of Nature Conservation and Biodiversity

Programme overview Wednesday 10.09.2025

*from 08:00 Registration of participants Reception area, Hörsaal-
zentrum Poppelsdorf*

09:00-11:30 Pre-conference workshops

- W12: Roots to regions: Tracking agroforestry for scaling up | Room 2.052
- W13: Bridging the gap: strengthening science-policy interfaces in agricultural research | Hörsaal 7
- W14: Enhancing tropical landscape multifunctionality, resilience, adaptability and health through socio-ecological gains: A knowledge exchange | Room 0.056
- W15: Let's talk about co-design! Exchange opportunity for researchers working with participatory approaches | lobby next to registration desk.
- W16: Strengthening science policy interfaces in light of the UN- Committee on World Food Security (CFS) with a focus on Women's and Girls' Empowerment | Room 2.045
- W17: Decolonising knowledge and practice in agricultural research | Room 2.046
- W18: Sustainability analysis of tropical agriculture | Room 2.047
- W19: Novel crops, from biodiversity to the bioeconomy: Opportunities and challenges in value chains and webs from the macaúba palm, an alternative oil crop in Brazil | Room 2.050
- W20: Inclusive and transformative strategies for implementing the African Fertilizer and Soil Health Action Plan | Room 3.055
- W21: Seeking to curb deforestation: Sticks, carrots, and their implications for agri-food and wood product value chains | Hörsaal 3
- W22: Reconciling equity and sustainability in agricultural water management: Contributions of CGIAR and German Development Cooperation in Africa | Hörsaal 4
- W23: How to strengthen food value webs for a sustainable agroecological transition – Experiences, opportunities, options, and perspectives | Hörsaal 5
- W24: Scaling, adoption and dissemination of good agricultural practices and innovations for food systems in Africa | Hörsaal 6
- W25: Advancing sustainable agricultural value chains through strengthening transdisciplinary skills and cooperation in East African doctoral education | Seminarraum 4 [0.023]
- W26: Six years researching tipping points in the Southwestern Amazon SES: Are we already there? | Room 1.051

10:00-10:30	<i>Coffee and tea break</i>	<i>Tent</i>
12:00-13:00	<i>Lunch break</i>	
13:00-13:20	Plenary – Welcome Addresses and Opening	Hörsaal 2
	<i>Streaming of the Plenary (Hörsaal 1)</i>	
13:20-13:50	Keynote speech and discussion	
13:50-14:30	Hans H. Ruthenberg Award for Graduates 2025	
14:30-15:15	Justus von Liebig-Award for World Nutrition	
15:15-15:45	<i>Coffee and tea break</i>	<i>Tent</i>
13:20-13:50	Keynote speeches and discussion	Hörsaal 2
16:45-17:00	<i>Mobility break</i>	
	Parallel oral thematic sessions I	Hörsaal 1 Hörsaal 2 Hörsaal 3/4 Hörsaal 5/6 Hörsaal 7 HS 2 (Meckenheimer Allee) HS 4 (Meckenheimer Allee)
18:30-22:00	<i>Apéro / Social gathering</i>	<i>Tent</i>
19:00-20:00	Meet & Greet with keynote and plenary speakers	Reception area
19:30	ATSAF e.V. members assembly (hybrid) – closed	Hörsaal 3/4
19:30-22:00	Pastoralist Film Festival	Hörsaal 2

Plenary session Wednesday 10.09.2025

13:00-13:30

Welcome addresses and opening | Hörsaal 2

Moderation: **CHRISTIAN BORGEMEISTER AND MATHIAS BECKER**, University of Bonn

FOLKARD ASCH, ATSAF / University of Hohenheim, Germany

MICHAEL HOCH, Rector of the University of Bonn, Germany

13:30-14:00

Keynote speech and discussion | Hörsaal 2

Chair: **CHRISTIAN BORGEMEISTER AND MATHIAS BECKER**, University of Bonn

DR. SIMEON EHUI

Director General of the International Institute of Tropical Agriculture (IITA), Nigeria and Regional Director for Africa, CGIAR



Innovations for Reconciling Land Use Change with Human and Environmental Health

Dr Siméon Ehui, born in Côte d'Ivoire, is the Director General of the International Institute of Tropical Agriculture (IITA) and CGIAR's Regional Director for Africa. He has more than 30 years of extensive experience in the fields of agriculture, food security, and sustainable development with a wide-ranging network of scientific research organizations within the CGIAR system, multilateral organizations, regional bodies, and national governments in Africa and other continents. During his career, he has held leadership positions, including Regional Director for Sustainable Development for West and Central Africa and Director of Agriculture at the World Bank, overseeing initiatives in Africa, the Middle East, Eastern Europe, and Central Asia.

WEDNESDAY 10.09.2025

Dr Ehui has played a crucial role in transformative initiatives, such as the launch of the Regional Hub for Fertilizer and Soil Health in West Africa and the Sahel based in IITA. He is a strong advocate for youth engagement and digital innovation projects across the African continent. As a visionary leader in agri-food systems, he promotes science-based solutions, strategic partnerships, and climate-smart agriculture to drive meaningful change.

Dr Ehui is a distinguished alumnus of Purdue University (USA) and serves on the Board of Directors of the Forum for Agricultural Research in Africa (FARA). He is also a member of the Scientific Advisory Board of the Purdue University Global Trade Analysis Project (GTAP). Dr Ehui is deeply committed to advancing food security in Africa through partnerships, and the development and implementation of agricultural policy reforms.

14:00-14:30



Foundation *Fiat Panis* | Hörsaal 2

Chair: ANDREA FADANI, Foundation *fiat panis* Ulm, Germany

The Hans H. Ruthenberg Award for Graduates 2025:

CHIARA MASSER (Justus-Liebig-Universität Gießen) | *Determinants of diet Quality Among Adolescents Living in an Urban Informal Settlement in Nairobi, Kenya* | PROF. DR. GUDRUN KEDING

SIMONE MARTINA DANI MELDER (Universität Hohenheim) | *Agrivoltaics in the Tropics: Evaluating the Socio-economic and Environmental Implications for Sustainable Rural Development in Colombia* | PROF. DR. ARNDT FEUERBACHER, JEAN-FRANÇOIS VIAN AND DR. MANUEL NARJES

14:30-15:15

GABRIEL ALEJANDRO VILLANUEVA ZAPATA | MELDER (TH Köln) | *Sustainability of Agroforestry Coffee Cultivation in the Cerro de Kuskawás Natural Reserve, Nicaragua* | PROF. DR. SABINE SCHLÜTER

Justus von Liebig-Award for World Nutrition:

Chair: ANDREA FADANI, Foundation *fiat panis* Ulm, Germany

PROF. DR. CHRISTIAN BORGEMEISTER, University of Bonn

Introducing DR. SUNDAY EKESI (Winner of the 2025 Justus von Liebig-Award for World Nutrition)

DR. SUNDAY EKESI | Fruit Fly Research for Development in Africa: From Science to Impact

15:15-15:45

Coffee and tea break

Tent

15:45-16:45

Keynote speeches and discussion | Hörsaal 2



PROFESSOR LENIS SAWEDA LIVERPOOL-TASIE

Michigan State University (USA)

Beyond the farm: Unlocking employment and livelihoods in Africa's evolving food systems

Lenis Saweda Liverpool-Tasie, Ph.D., is a globally respected development economist and MSU Foundation Professor at Michigan State University. Her research program focuses on transforming food systems, enhancing rural livelihoods, and strengthening evidence-based agricultural policy in low- and middle-income countries. With extensive experience leading high-impact, donor-funded projects on agricultural transformation, micro, small and medium scale enterprise (MSME) development, and policy capacity-building—she has become a trusted advisor to governments, international organizations, and academic networks. A U.S. presidential appointee to BIFAD, Dr. Liverpool-Tasie has authored over 100 peer-reviewed publications and received numerous awards for scholarly excellence and policy engagement. Her work is widely cited in top journals and featured in major development forums for its relevance to inclusive, climate-resilient, and nutrition-sensitive development.

**PROFESSOR CHRISTIAN HOFFMANN**

University of São Paulo, School of Pharmaceutical Sciences, Brasil

Exploring gut microbiome diversity and the nutrition transition in Brazil

Dr. Hoffmann is an Assistant Professor at the University of São Paulo, specializing in microbial ecology and gut microbiome research. With over 15 years of experience, he leads projects on how nutrition, agricultural policies, and socio-economic factors impact the gut microbiome in Brazil. His lab integrates molecular biology, sequencing, and bioinformatics, collaborating internationally to study microbiome variation and its health implications.

16:45-17:00

Mobility break

17:00-18:30

Parallel oral thematic sessions I

Hörsaal 1

Hörsaal 2

Hörsaal 3/4

Hörsaal 5/6

Hörsaal 7

HS 2

(Meckenheimer Allee)

HS 4

(Meckenheimer Allee)

Oral presentation sessions I 17:00 – 18:30

1d. Animal nutrition

Room: HS 2 (Meckenh. Allee)

Chair: EVA SCHLECHT

- 17:00 **Lead paper:** ALFREDO PAUCIULLO, Sequencing and characterisation of α s2-casein gene (CSN1S2) in the Old World camels have proven genetic variations useful for the understanding of species diversification (ID 971)
- 17:30 ALISHER KOSIMOV, Linking formality and productivity in smallholder dairy systems: A case from Tajikistan (ID 925)
- 17:40 AUSTINE CHIMANKPA NWOKORO, Sustainable pig nutrition: Evaluating sweetpotato composite meal as an alternative energy source (ID 471)
- 17:50 EMMANUEL OLUWAMUYIWA OJE, Enhancing aquaculture resilience with baobab and tamarind pulps as local micronutrient sources: Effects on growth and haematology response in catfish fingerlings (ID 143)
- 18:00 MARIA OGUCHE, Neglected livestock species production in southwestern Nigeria: Alternatives for sustainable land and ecosystem management? (ID 340)
- 18:10 WRAP UP AND FINAL DISCUSSION

2a. Soil health

Room: Hörsaal 3/4

Chair: NINA GRASSNICK

- 17:00 CHIKE ONYEKA MADUEKE, Participatory soil mapping at village scale, supported by gamma ray measurement: A case study of Boukoussera, Benin (ID 186)
- 17:10 SARAH ELAETE, Comparing indigenous and scientific (Palintest) soil fertility assessment approaches for better soil health monitoring, management, and farm decision-making in Uganda (ID 609)
- 17:20 FRANK RASCHE, Driving change: Inclusive strategies to realise Africa's fertiliser and soil health agenda (ID 711)
- 17:30 ESTHER GLORIA MBABAZI, The impact of an extension-based campaign and the adoption of integrated soil fertility and water conservation technologies on household food security: Experimental evidence from Uganda (ID 241)
- 17:40 AFUA AMPONSAH AMANKWAH, Effect of anthropogenic activities on carbon stocks in protected areas within Ghana's forest-savannah transition zone (ID 260)
- 17:50 ANDREJ SKOK, The impact of tree diversity on soil organic carbon in cocoa agroforestry systems of Guatemala (ID 910)
- 18:00 WRAP UP AND FINAL DISCUSSION

WEDNESDAY 10.09.2025

2b. Water quantity and quality**Room: Hörsaal 7 [1.004]****Chair: BERNHARD TISCHBEIN**

- 17:00 **Lead paper:** CLAUDIA RINGLER, Water Use in Agri-Food Systems: Growing Needs Confronting Waning Supplies (ID 998)
- 17:30 ALEXANDER MORGENSTERN Concept analysis of zero water loss greenhouses (ID 221)
- 17:40 HANAN KHAIRY, *Chlorella sorokiniana* - based phycoremediation of dairy industry wastewater: An economical method of producing bio-diesel (ID 71)
- 17:50 THOMAS FALK, Effectiveness of games for experiential learning and collaborative governance of groundwater in India (ID 420)
- 18:00 YOUNESS BOUBOU, Agricultural restructuring and groundwater depletion in Morocco's oasis of Figuig (ID 588)
- 18:10 WRAP UP AND FINAL DISCUSSION

3b. Agroforestry**Room: Hörsaal 2****Chair: EIKE LUEDELING**

- 17:00 HILDA KEGODE, Beyond tree planting: Species differences and drivers of tree survival rate in smallholder systems in eastern Rwanda (ID 808)
- 17:10 TATIANA RODRIGUEZ, Unpacking local perspectives on transitioning to successional cacao agroforestry: A Q methodology approach in coastal Ecuador (ID 325)
- 17:20 HOA DO, Understanding diverse adaptation pathways to support agroforestry transition in northwestern Vietnam (ID 446)
- 17:30 MD SOFIULLAH, Can agroforestry sustain farm profitability under climate risks in Uzbekistan? (ID 168)
- 17:40 DIETMAR STOIAN, Climate-resilient agribusiness in Rwanda: Impact through the integration of agroforestry, enterprise, and value chain development (ID 424)
- 17:50 WRAP UP AND FINAL DISCUSSION

4a. Food environments**Room: HS 4 (Meckenh. Allee)****Chair: IRMGARD JORDAN**

- 17:00 JOHNNY OWUSU-ARTHUR, Consumption patterns and perception of healthiness of convenience foods in low-income urban communities: implications for public health (ID 355)
- 17:10 NICANOR ODONGO Spatial distribution of healthy and unhealthy food groups in rural and urban food environments: A case study for Kenya (ID 442)
- 17:20 SAM BODJIRENOU, Is food promotion and marketing in the school food environment conducive to healthy choices for adolescents? Evidence from West Africa countries (ID 928)

- 17:30 EWARD MUSHI, Motives underlying the consumption of healthy foods in urban and peri-urban areas of Tanzania: the food choice questionnaire (ID 647)
- 17:40 THI SAU NGUYEN, Modelling decisions to improve food environments for vulnerable urban communities in Hanoi, Vietnam (ID 681)
- 17:50 CHAITANYA GANGADHARA, Land use and food consumption patterns along a rural-urban transect in Bangalore, India (ID 448)
- 18:00 WRAP UP AND FINAL DISCUSSION

5b. Gender, power, and access: Dynamics in land and food systems

Room: Hörsaal 5/6

Chair: TINA BEUCHELT

[1.001/1.002]

- 17:00 HIDAYATUL FITRI, Investigating women's perspective on long-term sustainability adoption of small-scale biogas in rural areas (ID 683)
- 17:10 FRANCOISE UMARISHAVU, Spatial distribution of healthy and unhealthy food groups in rural and urban food environments: A case study for Kenya (ID 132)
- 17:20 RACHEL MUJONG, Empowering women through mechanised innovation: Exploring gender dynamics in smallholder agriculture (ID 752)
- 17:30 CÉCILE POITEVIN, The impact of sustainable agricultural innovations on women's agency and voice: A gendered perspective from northern Ghana (ID 140)
- 17:40 CAROLIN ROSENBERG, Transforming gender norms through the Gender Model Family approach: Evidence from Sierra Leone (ID 447)
- 17:50 WRAP UP AND FINAL DISCUSSION

6a. Digital innovations

Room: Hörsaal 1

Chair: MELVIN LIPPE

- 17:00 **Lead paper:** AMIT KUMAR SRIVASTAVA, The promise and perils of AI and hybrid modelling in agriculture (ID 474)
- 17:30 KATHARINA SCHILLER, Responsible scaling of agricultural innovations: Lessons learned from the efforts of the GIZ and CGIAR (ID 707)
- 17:40 PRINCE ASARE, Prioritizing nature-based solution locations: Comparing human perspectives and model assessments of degradation and ecosystem services (ID 897)
- 17:50 JUAN CAMILO RIVERA-PALACIO, Human behaviour affects the performance of smartphone-based monitoring in coffee crop (ID 182)
- 18:00 SUBASH SURENDRAN PADMAJA, Estimating the optimum frequency of agricultural technology use using observational data and machine learning (ID 748)
- 18:10 SABINE SCHWEITZER, Monitoring forest loss in tropical dry forests of central Colombia: Global datasets vs. satellite imagery (ID 900)
- 18:20 WRAP UP AND FINAL DISCUSSION

WEDNESDAY 10.09.2025

Apéro & Meet & Greet | 18:30-22:00 | Tent

Pastoralist Film Festival | 19:00-22:00 | Hörsaal 2

**ATSAF e.V. members assembly | 19:30 | Hörsaal 3/4
[0.001/0.002] (hybrid)**

Programme overview – Thursday 11.09.2025

08:30-10:00	Poster & Online sessions P1	page 32
	<i>Streaming of online poster sessions</i>	
10:00-10:30	<i>Coffee and tea break</i>	<i>Tent</i>
10:30-12:00	Oral presentation sessions II	
		<i>Hörsaal 1</i>
		<i>Hörsaal 2</i>
		<i>Hörsaal 3/4</i> <i>[0.001/0.002]</i>
		<i>Hörsaal 5/6</i> <i>[1.001/1.002]</i>
		<i>Hörsaal 7 [1.004]</i>
		<i>HS 2 (Meckenheimer Allee)</i>
		<i>HS 4 (Meckenheimer Allee)</i>
12:00-13:30	<i>Lunch break – see page 10 for tips where to purchase your lunch</i>	
13:30-15:00	Oral presentation sessions III	page 44
15:00-15:30	<i>Coffee and tea break</i>	<i>Tent</i>
15:30-17:00	Oral presentation sessions IV	page 48
17:00-17:15	<i>Mobility break</i>	
17:15-18:45	Poster sessions P2	<i>Tent</i>
	<i>Streaming of online poster sessions</i>	
19:00-23:00	<i>Conference dinner & party (Poppelsdorfer Mensa)</i>	page 60

Poster & Online sessions P1 – 08:30-10:00

1c. Crop biotic stress

Room: Tent

Chair: STEPHAN WINTER

- 625| BENSON KISINGA| Weather-guided late blight management: Reconciling potato production with environmental health in Rwanda
- 515| OLAYEMI FAJIMI| Cocoa farmers' willingness to adopt DNAFoils for early detection of cocoa swollen shoot virus disease in Ghana
- 921| DJAMILOU GABEYE| Determinants of inappropriate phytosanitary practices in off-season irrigation in the Goulbi Maradi valley, Niger
- 958| SAMAR SHEAT| Global threats to cassava: Uncovering the pathogen complexes behind witches' broom and frogskin diseases
- 380| EZEQUIEL GONZÁLEZ| Influence of agroecological management and flower availability on predators and parasitoids in horticultural farms
- 377| TINON NEHAL DIAOUGA MAMADOU| Cotton growth compensation affected by *Fusarium oxysporum* and root-knot nematodes in Benin
- 326| TAMEGNON HOSPICE TOSSOU| Genetic diversity and host-specific adaptation of *Beauveria bassiana* improve efficacy against *Spodoptera frugiperda* larvae under laboratory conditions
- 551| NOEMI HAUSER| From nematode nightmare to yield triumph? Evaluating biological agents' effect on lettuce cultivation in Costa-Rica
- 595| ADRIANE WENDLAND| Multiplex PCR to detect *Curtobacterium flaccumfaciens* pv. *flaccumfaciens* and the common bean root pathogens *Fusarium oxysporum* f. sp. *phaseoli* and *Fusarium solani* f. sp. *phaseoli*
- 812| MEKURIA WOLDE ASSENA| Evaluation of Striga management strategies for sustainable cereal production in sub-Saharan Africa: A meta-analysis

1d. Animal nutrition

Room: Tent

Chair: EVA SCHLECHT

- 8| ABERRA MELESSE| Partial replacement of soybean meal with *Moringa stenopetala* leaf meal enhances the organoleptic properties of internal egg qualities in Lohmann-tradition chicken breed
- 472| IKEDICHUKWU ADINDU| Novel use of cassava peel and leaf composite as a maize replacement in broiler nutrition
- 153| CHRISTIAN LÜCKSTÄDT| Dietary sodium diformate improves productivity index in broilers under tropical conditions
- 23| ABIODUN MONSURI MEBUDE| Effects of ginger, roselle and their blends on performance, carcass and meat lipid oxidation in broiler chickens
- 108| ANSELM EGO ONYIMONYI| Blood and hormonal profile of Noiler hens on aqueous extracts of African sausage fruit (*Kigelia africana*)

- 699 | PASCALE WAELTI | From waste to dairy: Enhancing camel milk production with sustainable feed alternatives
- 566 | ADJOUA ANGE-JOKEBED N'GORAN | Effects of water regimes and defoliation on herbaceous forage yield and nutritional quality in the Sahel
- 586 | CHRISTIAN BATEKI ADJOGO | Suitability assessment of different cattle breeds kept on different feeding regimes for dairy farming in East Africa
- 205 | MICHAEL PETERS | A model to promote the adoption of improved feeds and forages innovations for sustainable livestock production in Vietnam's northwest highlands
- 483 | SHAHIN ALAM | Model-based estimation of methane emissions in Indian cows using seasonal feeding trial data
- 911 | SHAHIN ALAM | Recycling food waste for animal feed in South Asia: A systematic review of circular practices

2a. Soil health

Room: Tent

Chair: NINA GRASSNICK

- 528 | ABIOLLA ROBERTSON KÉVIN AMOUSSOU | Impact of forest landscape restoration practices on soil physical properties dynamics: The case of the head of Mékrou watershed in Benin
- 568 | RAINER DETERING | Healing the planet through regenerative land systems: From diets to soil microbiomes
- 860 | AJAY KUMAR MISHRA | Nature-based and circular solutions for soil health in climate-resilient urban-peri-urban landscapes
- 611 | ENDERSON FERREIRA | Use of Macaúba-derived biochar as a carrier in *Rhizobium tropici* inoculant
- 612 | ENDERSON FERREIRA | Economic viability of phosphate-solubilising inoculant application in common bean farming
- 160 | CHUKWUEBUKA CHRISTOPHER OKOLO | Using soil health parameters as indicators of sustainable management in semi-arid soils
- 963 | JEAN DZAVI | Leaf litter breakdown rate in some streams of the equatorial forest in Cameroon
- 749 | NIPUNA WITHANAGE | Rhizosphere enzyme activities in sorghum under limited resource availability in sub-Saharan Africa

THURSDAY 11.09.2025

2b. Water quantity and quality

Room: Tent

Chair: BERNHARD TISCHBEIN

- 333 | GILDA SHAHNASERI | Navigating agro-ecological challenges and food futures under drought stress in central Iran
- 284 | CLARA MÜLLER BENARROZ | Assessing the InVEST® seasonal water yield model for streamflow simulation in the Brazilian savanna (Cerrado)
- 526 | THOMAS BRINGHENTI | Enhancing irrigation water use efficiency for sustainable Macadamia production in South Africa
- 322 | OBADIAH MWANGI | Sowing the drops of change: Transforming lives in the Sahel amidst climate adversity
- 436 | ANDREA CAVICCHI | Interplay between technological transformation, rural welfare, collective action and water conflicts: A system approach.
- 862 | FRANCESCO ANICHINI | Micro water harvesting integrated with agroecological practices: The case study of re-farm project
- 689 | VAN HONG NGUYEN | Wastewater reuse for sustainable agriculture: A pilot implementation study
- 964 | JEAN DZAVI | Ecological status of streams of the equatorial forest in Cameroon: Benthic macroinvertebrates structure and physicochemical profile

3b. Agroforestry

Room: Tent

Chair: EIKE LUEDELING

- 456 | KIRSTEN MEUER | NTFP domestication in agroforestry systems for sustainable multi-functional landscapes at Lake Bosumtwi biosphere reserve, Ghana
- 633 | KLARA DZHAKYPBEKOVA | Modelling forest policy impacts on households and forest dynamics with LANDIS-II: The case of walnut forests in Kyzyl-Unkur village, Kyrgyzstan
- 687 | THOMAS BRINGHENTI | Multispectral drone image analysis for shade tree functional traits and drought response in cocoa agroforestry systems
- 336 | MOHAN KRISHNA CHOWDRY AVILINENI | Ecological factors shaping agroforestry practices among smallholder farmers in Gorkha district, Nepal
- 190 | STÉPHANE SAJ | Pruning: An agronomically efficient and ecological management technique, underused in cocoa cropping and agroforestry
- 166 | KOSSI HOUNKPATI | Integration tree into cropping systems: Insights for enhancing agroforestry and forest landscape restoration in central Togo
- 665 | THOMAS HILGER | Evaluation of cultivation strategies for *Acrocomia aculeata*, a versatile species from the neotropic
- 468 | HAMY RAHARINAIVO | Understanding adoption drivers of forest landscape restoration practices: Evidence from northern Madagascar
- 433 | MICHEL KABIRIGI | Impact of forest landscape restoration on mitigating erosion: A systematic review
- 247 | CHLOÉ DUROT | Climatic patterns and buffering effects of agroforestry: Cacao production facing climate change in Amazonian Bolivia

- 411 | HAFTE TESFAY | Litterfall production and associated macro and micro-nutrient fluxes in indigenous agroforestry systems landscape, Ethiopia
- 83 | LEIDY JOHANNA BEDOYA GIRALDO | Agroforestry systems in the Peruvian amazon: Exploring typologies and farmers' perceptions in San Martín
- 763 | MELVIN LIPPE | Harnessing earth observation data to verify deforestation-free risk compliance under the EUDR: The case of smallholder coffee
- 705 | FARIMAH ASADI | Investigating water fluxes and hydraulic lift in agroforestry: Innovative monitoring techniques and machine learning

4a. Food environment

Room: Tent

Chair: IRMGARD JORDAN

- 614 | CHIARA MASSER | Determinants of diet quality among adolescents living in an urban informal settlement in Nairobi, Kenya
- 239 | JOHANNA SCHOTT | Food environments in transitioning economies in Africa and Asia
- 497 | CARMEN KLINGER | Food environments in Africa: Addressing malnutrition using a syndemics approach (FoodSAMSA)
- 904 | SADIKA HAQUE | Exploring the diverse food system of Bangladesh: Unpacking its influence on people's eating habits
- 616 | CORY WHITNEY | Improving children's nutrition: A decision-analytic approach to school meal interventions in Vietnam
- 908 | HAJI ATHUMANI MSANGI | Structural divergence, shared insecurity: A comparative analysis of the drivers of food expenditure patterns in Rwanda and Tanzania
- 694 | MARIE HAAS | Traveling photo exhibitions to disseminate family-invented uncommon solutions to overcome malnutrition in Madhya Pradesh, India
- 453 | THI THU GIANG LUU | Transitions of the Hanoi food environment: Insights from systems thinking and leverage points
- 505 | MONICAH AGABA | Body size preference is a predictor of cardio-metabolic health among urban women in Uganda: The health-beauty paradox
- 492 | ALICE GOMEZULU | Exploring attributes of urban food environments using a GIS approach and implications for public health
- 435 | KIRA FASTNER | Linking cities and hinterlands: How food vendors shape food systems in urbanising West Africa

5b. Gender, power, and access: Dynamics in land and food systems

Room: Tent

Chair: TINA BEUCHELT

- 222 | TINA BEUCHELT | Dynamics of climate change, land scarcity, and gender in northern Ghana's food and land systems
- 449 | CAROLIN ROSENBERG | The role of cooperatives in strengthening the leadership and voice of women: Evidence from Zambia
- 722 | WAING THINZAR MOE | Comparative valuation of ecosystem services across countries and genders
- 144 | SHANJIDA SHARMIN | Consumer preferences for aquatic products in social commerce: Evidence of emerging female entrepreneurship in Bangladesh
- 258 | PETER ASARE-NUAMAH | The influence of gender and land tenure on smallholder farmers' adaptation to climate change
- 267 | DEWI CANDRANINGRUM | Rooted resistance: Gendered narratives of land dispossession and planetary health in Central Java
- 903 | LILLI SCHEITERLE | Beyond yield: Exploring gendered adoption pathways of plantain innovations in Ghana
- 562 | SADIKA HAQUE | Feminisation of agriculture and land management: gendered impacts on women's livelihoods in northwest Bangladesh

6a. Digital innovations

Room: Tent

Chair: MELVIN LIPPE

- 422 | KHANDOKER TANJIM AHAMMAD | Detecting phosphorus deficiency in maize plant leaves using hyperspectral imaging
- 578 | SATYA PRAKASH | Field margin vegetation mapping using satellite images and deep learning models in a tropical landscape
- 268 | SIMON THOMSEN | From data to decisions: Improving land use models with machine learning for sustainable land management
- 154 | NICOLAS VALBUENA RINCON | North Colombian farmers' trade-off assessment and willingness to pay for agrivoltaics in the context of the just energy transition policy
- 183 | SUWIMON WICHARUCK | Biomass energy crop plantation under solar photovoltaics in northern Thailand
- 407 | JANVIER NTWALI | Making geospatial technology work from farm to policy scales in West Africa
- 869 | STEFANIE STEINBACH | Impact of an extension campaign and the mediating role of women's empowerment on the adoption of agricultural technologies in Uganda
- 173 | MUHAMMAD AHMED | Examining the adoption of agricultural drones among Pakistani farmers: A modified technology acceptance model

7d. DAAD Alumni seminar I

Room: Tent

Chair: Nora Janson

- 352 | CARLOS DAVID CLAUSER | Land use changes and anthropogenic impacts due to rice fields in Santa Fe (Argentina)

-
- 629 | DORICA SINGINI | Climate-resilient crops for planetary health: Strengthening cowpea, sesame, and sorghum value chains for food systems transformation and land health restoration in Malawi
- 376 | VAN HIEP TRAN | Empowering rural women through chicken value chain development in Tuyen Hoa district, Quang Binh province, Vietnam
- 667 | THIAGO SABATINELLI RODRIGUES | The Hileia Baiana: Enriched cabruças as prospective areas for developing native seed banks and biodiversity conservation networks
- 970 | JORGE ANTONIO GÓMEZ DÍAZ | Integrative conservation of biodiversity: Identifying priority species and sites for sustainable land management in Veracruz, Mexico
- 975 | LYDIA ADELEKE | Analysing food and fish consumption patterns in Nigeria: Insights from catfish consumption in Ijare, Akure North, Ondo State
- 983 | DIAH PUTRI UTAMI | Strategic landscape selection for jurisdictional approaches: Insights from the Siak Pelalawan landscape programme (SPLP), Indonesia
- 269 | SHAHIDAH MD NOR | Addressing inefficient post-harvest practices to mitigate food waste in Malaysian food services
- 984 | HENRY COFIE FORDI | Women in mechanisation
- 986 | ANJUM MUNIR | Advancing agro-food sustainability in Pakistan: solar-based cold storage and dehydration technologies for post-harvest management
- 499 | YENDOUHAME MONKOUNTI | Transforming agrifood systems around protected areas in Togo: Challenges for population health and ecosystem conservation
-

Online 2b/2d: Water ecology and climate change aspects

Streaming in room: Hörsaal 1

- 713 | MADINEH KAKAVANDI | Integrated management of wetland ecosystems using a dynamic systems approach (case study: Anzali wetland)
- 799 | ASSITAN DAOU | Farmers' management practices for sorghum production for climate change adaptation in Mali
- 592 | MAHDI BADRI FARIMAN | Integrated ecological assessment and human pressures affecting the estuaries of the southern Caspian Sea basin
- 61 | DISHA GUPTA | Unwatering the fields: Analysing incentives for crop diversification amid groundwater crisis in India
- 414 | STEPHANE LAKO MBOUENDEU | Influence of irrigation on land use intensity and specific revenue for small farms in Togo
- 149 | GUTA REGASA | Enhancing climate adaptations through dissemination of information, knowledge, and resources in Ethiopian coffee value chain
- 416 | LALAINA ANDRIANARIJAONA | Sustainable fertilisation to reduce GHG emissions and increase rice yield in Madagascar's highland lowlands
- 931 | ANUP KUMAR DEY | Climate-smart Arakuscape: Developing regenerative coffee value-chain in Andhra Pradesh, India
- 162 | ELISHA OTIENO GOGO | Water-absorbing polymer saves on water use while improving the performance of selected cereal crops, leafy and fruit vegetables
-

-
- 481 | HIDAYATUL FITRI | Evaluating the influence of enzymatic hydrolysis pretreatment on the compositional structure of rice straw for enhanced biogas generation
- 158 | YOUSOF AZADI | Applying the extended norm activation theory to predict farmers' groundwater conservation behaviour in western Iran
- 639 | TAIWO EWULO | Forecasting climate extremes impacting sorghum production in Senegal: Evidence from APSIM model simulations
-

Online 3c: Biodiversity

Streaming in room: Hörsaal 3/4

- 810 | MOUSSA GANAME | Does plant diversity or dendrometric characteristics enhance carbon storage in West African savannah?
- 838 | VERA SOARES | Conciliating agriculture and biodiversity conservation in Mozambican sky islands: Do farming systems matter?
- 92 | DEKEBA MOGES TOLA | Influence of species, source of origin and maturity stages on nutritional composition, bioactive compounds and antioxidant potentials of underutilised nettle (*Urtica* spp.) leaf
- 941 | JANE M. MACHARIA | Importance of plant phenology and implications of agricultural expansion for beetle diversity in a Kenyan highland floodplain
- 943 | ELIANA ALBA | Seeds of change: Reimagining governance for sustainable agrobiodiversity and food sovereignty in Bolivia
- 700 | SHAMIMA AKHTER | Ecosystem services and livelihood importance assessment for wetland conservation in Haor regions of Bangladesh
- 712 | MANOBRATA DAS | Sustainable integrated farming systems (SIFS) as biodiversity refugia: Comparative analysis of ecosystem service providers across farming systems in subtropical India
- 723 | HELMUTH E. NIEVES-ORDUÑA | Genetic adaptation in natural populations of the chocolate tree *Theobroma cacao*
- 739 | PAVENDHAN APPAVU | Biodiversity dynamics in Samathur wetland: Implications for agroecosystem resilience and conservation
- 486 | DONG-GILL KIM | Beyond neglect: Unlocking the drought resilience potential of underutilised plants and systems
-

Online 5c/5d: Integrating social learning and digital innovation

Streaming in room: Hörsaal 5/6

- 314 | RODÉRIC ROLAND SINGBÉNOU SAGBO | Ecosystem services and social interactions in a multiple-use protected landscape
- 426 | SHWETA GUPTA | Stories through the lens: youth aspirations, and agroecology
- 960 | ADAM SAVELLI | In situ displacement: The intersection of immobility and dispossession
- 430 | ELIZABETH GETAHUN | Effectiveness of decentralised co-designed extension materials based on farmer-led innovation in conflict-affected North Shewa, Ethiopia
- 330 | FATUMA MUTESI | Collaborative learning needs for adaptation to the impacts of drought in Kiboga district, Uganda
-

-
- 591 | FUYU FUJIWARA | Sustainability of group management in rural women's entrepreneurship
- 392 | RAJKUMAR RAJAN PILLAI | Decentralised public action for sustainable development: Local action plans on climate change in Kerala, India
- 399 | ANNE-KATRIN BROOCKS | Knowledge encounter: Multispecies perspectives on land use change in the southwestern Amazon
- 289 | RUTH OCHUODHO | Participatory development and application of a multi-risk analysis tool
- 475 | DANIELA ORDUZ | Farmer groups as a tool for rural development programs: perspectives from northwest highlands in Vietnam
- 853 | PAVENDHAN APPAVU | Dairy entrepreneurship yatra: A pathway to participatory learning and inclusive agricultural governance in India
- 849 | SARITA MISHRA | Enhancing climate-resilient farming through digital advisory services: Evidence from an RCT on SLMP adoption
-

Online 3d/6d: Land use change and grazing systems

Streaming in room: Hörsaal 7

- 293 | DANNY BERTRAND ACHE NJOH | Reconciling land system changes with planetary health. case study: Sunrise cooperative-poultry farms and services in Cameroon
- 44 | MOJTABA NIKZAD | Resilient agricultural trade and land system sustainability: A comparative advantage analysis of Iranian pistachios and dates
- 817 | MAHDI RAFATI | Economic, social, and environment factors shaping urban agricultural resilience
- 65 | MOJTABA NIKZAD | Resilient land use and food security in Afghanistan: A mathematical-econometric framework for sustainable agriculture
- 847 | AMADOU DJIBO ABDOULKADER | Dynamics of land productivity in the Maradi region, Republic of Niger
- 628 | VICTORIA KARIATHI | Land-use decisions in food security: confirmatory factor analysis of status and power in rural Tanzania
- 577 | HYELNI DAVID | Analysis of livelihood diversification strategies among settled agropastoralists in northeastern Nigeria
- 918 | KENNETH W. SIBIKO | Scaling improved forages for resilient livestock systems in Eastern Africa: Insights from the grass2cash@scale project
- 251 | FRANKLIN NANTUI MABE | Farmer-herder conflicts and food security in Ghana: The empirics from sedentary farmers in northern Ghana
- 888 | THEDY KIMBI | Productivity gains and soil sustainability: insights from sorghum farmers in dodoma, Tanzania
- 240 | RAPHAEL OLANREWaju BABATUNDE | Neo-colonialism or responsible investment? Analysis of impact of large-scale land acquisitions in Global South countries
- 26 | ABDUL-HANAN ABDALLAH | Agrochemicals, machines and biodiversity in Ghana: The ecological cost of land preparation methods of large-scale land acquisition by domestic entities
-

Oral presentation sessions II – 10:30-12:00

1b. Crop abiotic stress

Room: Hörsaal 1

Chair: MATTHIAS WISSUWA

- 10:30 ATIFULLAH SHINWARI, Climate change shifts almond bloom dates in Afghanistan (ID 623)
- 10:40 SHYAM PARIYAR, Highland rice under changing climate: Lessons learnt from field and controlled greenhouse studies (ID 776)
- 10:50 ELVIRA SARI DEWI, Evaluating drought and salinity stress response among tropical sorghum cultivars using high-throughput phenotyping (ID 133)
- 11:00 NATALIE LAIBACH, Abiotic stress responses in sorghum: Exploring root metabolic networks and BR signaling for sustainable agriculture (ID 175)
- 11:10 HEMANTH KUMAR PUPPALA, Interactive effects of VPD and salinity on growth, ion distribution, and tolerance thresholds in hydroponically grown tomato (ID 208)
- 11:20 NIKEN AYU PERMATASARI Drought, salinity, and their combination affect the growth and secondary metabolites of tomato (*Solanum lycopersicum*) (ID 342)
- 11:30 WRAP UP AND FINAL DISCUSSION

1e. Animal production

Room: Hörsaal 3/4

Chair: REGINA RÖBLER

[0.001/0.002]

- 10:30 **Lead paper:** ANTHONY M. WHITBREAD, Delivering an equitable transition to sustainable and low-emission livestock systems in low- and middle-income countries (LMICs) (ID 980)
- 11:00 FRANCIS MUCIRA MURAGE, Determinants of forage crops diversification among smallholder dairy farmers in Kenya (ID 572)
- 11:10 ELIZABETH YEBOAH, Assessing the potential contribution of crop residues to mixed crop ruminant systems in northern Ghana (ID 955)
- 11:20 ROLAND MUGUMYA, Factors influencing adoption of climate-smart livestock practices in Eastern Africa: Insights from Uganda (ID 193)
- 11:30 ABERRA MELESSE, The external and internal egg quality characteristics improved through the inclusion of *Moringa stenopetala* leaf meal in the diets of commercial layer hens (ID 9)
- 11:40 Wrap Up and Final Discussion

4b. Sustainable food systems**Room: HS 4 (Meckenh. Allee)****Chair: AMY FAYE**

- 10:30 SARA RANKIN, Food systems profiles: A strategic tool for understanding food systems, diagnosing challenges, enabling dialogue, articulating actors and informing territorial agendas (ID 624)
- 10:40 HAJI ATHUMANI MSANGI, Balancing conventional and agroecological farming for sustainable agriculture and food security: empirical insights from Tanzania (ID 679)
- 10:50 SADIKA HAQUE, Rethinking land allocation in northern Bangladesh: Balancing nutrition and environmental health (ID 554)
- 11:00 SANGHYO MOON, Gardenhub: optimising school gardens for sustainable food environments (ID 797)
- 11:10 ELIZAPHAN RAO, Farm-level impacts of business development support to last-mile providers of dairy inputs and services in Tanzania (ID 784)
- 11:20 PRISCA KIMARO, Institutional drivers of millet commercialisation and household food security in central Tanzania (ID 496)
- 11:30 WRAP UP AND FINAL DISCUSSION

5d. Bridging farmer innovation and digital co-design**Room: HS 2 (Meckenh. Allee)****Chair: MARIA RESTREPO**

- 10:30 RUFO ROBA HALAKHE, Peer-assisted smartphone learning to support digital literacy and participatory design in northern Kenya (ID 890)
- 10:40 SEAN YEO, Breaking the failure cycle: Strategy game design to rethink mangrove restoration (ID 329)
- 10:50 FRANCIS E NDIP, Agricultural commercialisation and children's welfare: Impacts on diets and education (ID 161)
- 11:00 MAREIKE AUFDERHEIDE-VOIGTS, Enhancing livestock husbandry and rural livelihoods through peer-to-peer information access: A transdisciplinary approach in communal areas of Namibia (ID 909)
- 11:10 WRAP UP AND FINAL DISCUSSION

6c. Science policy**Room: Hörsaal 5/6 [1.001/1.002]****Chair: JULIET WANJIKU KAMAU**

10:30	SUNDUS SALEEMI, Are science-policy-society dialogues on climate change, biodiversity, and agri-food systems aligned? (ID 755)
10:40	BENJAMIN STUCH, Co-producing social-ecological scenarios and iterative modelling alternative land-use futures in south-western Amazonia (ID 668)
10:50	FERDINAND ADU-BAFFOUR, Mining the message: Competing narratives of authority in informal mining communities in Ghana (ID 858)
11:00	HAMZA MOLUH NJOYA, Institutional design of forest landscape restoration in central Togo: Informing policy-making through Q methodology analysis (ID 131)
11:10	KLAUS REINARZ ABRIGO, Carbon footprint of smallholders in Tanzania: A survey-based approach (ID 512)
11:20	EMMANUEL TETTEH JUMPAH, A review of agriculture and technology policies for sustainable production and food security in Ghana (ID 427)
11:30	Wrap Up and Final Discussion

6d. Land system changes**Room: Hörsaal 2****Chair: HANNAH JAENICKE**

10:30	Lead paper: PATRICK MEYFROIDT, From key facts and theories on land systems towards a policy roadmap to enhance planetary health (ID 979)
11:00	DESALEGN TEGEGNE MENGISTU Evaluating landscape management interventions in Ethiopia: Insights from local and scientific knowledge (ID 163)
11:10	PRINCE ASIEDU, The adoption of sustainable land management practices in northern Ghana: Role of land tenure modalities (ID 415)
11:20	DIANA CRISTINA MORENO VARGAS, The evolving concept of multi-functional landscapes: do shifting priorities drive contemporary rural planning? (ID 350)
11:30	SHIBIRE BEKELE ESHETU, Multi-criteria land use decision (MCLUD): A framework to guide land use planning using the AHP model (ID 215)
11:40	JONAS OSEI-ADU, Agriculture technologies for a resilient crop and livestock production system in West Africa (ID 75)
11:50	Wrap Up and Final Discussion

7b. BMZ/giz session

Room: Hörsaal 7 [1.004]

Chair: ALIÉNOR DE CUYPERE

10:30

THERESA HERBOLD, Why science matters for the transformation of agricultural and food systems: A science-policy dialogue (ID 981)

To transform agricultural and food systems globally, we need the right levers for change. Data and evidence are crucial to identifying these levers and lay the foundation for sound political decision-making. Scientists and other partners have an important role to play in providing such data and evidence, thereby enabling decisions that generate impact at scale, sustainably and efficiently.

German development cooperation involves both national and international research institutions in its programmes. The so-called “accompanying research” has demonstrated great potential to guide both German government and policymakers in partner countries towards impactful action.

However, work remains to be done to ensure that relevant scientific evidence reaches policymakers and is actively being used in decision-making processes. Improving demand-orientation of science and tailoring scientific results to the needs of policymakers remains a challenge.

Against this background the panel aims to discuss the kind of data, evidence and policy advice we need to ensure inclusive policymaking and sustainable impact at scale. How can scientific outputs become relevant and actionable for policymaking? And how can the science-policy dialogue be structured to achieve this objective?

Speakers and panellists representing science, policy, and development cooperation will participate in the discussion.

Oral presentation sessions III – 13:30-15:00

1a. Crop management

Room: Hörsaal 1

Chair: THOMAS GAISER

- | | |
|-------|---|
| 13:30 | Lead paper: LEENA TRIPATHI, Role of biotechnology in advancing African agriculture for planetary health (ID 976) |
| 14:00 | MILKA KIBOI, Performance and yield stability of maize under a long-term experiment in the sub-humid tropics (ID 731) |
| 14:10 | BRIGHT SALAH FREDUAH, Evaluating sustainable maize intensification strategies in smallholder farming systems in northern Ghana (ID 740) |
| 14:20 | LOTTE WOITTIEZ, Intercropping immature oil palms with food crops: Effects on oil palm growth (ID 274) |
| 14:30 | MARTIN RAPHAEL TENDENG, Performance of lettuce (<i>Lactuca sativa</i> L.) under different shading levels in Sant-Louis, Senegal (ID 922) |
| 14:40 | WRAP UP AND FINAL DISCUSSION |

2d. Climate change adaptation & mitigation

Room: Hörsaal 2

Chair: AMIT KUMAR SRIVASTAVA

- | | |
|-------|--|
| 13:30 | JAVIER MIRANDA, Encouraging adoption of climate-resilient seeds: Evaluating financial incentives in a framed experiment in northern Ghana (ID 718) |
| 13:40 | KAUSHIK MUDUCHURU, Agricultural yield declines from the rapid removal of air pollutants under carbon neutrality (ID 769) |
| 13:50 | TIM HECKMANN, Agroecological practices as climate adaptation strategy in Madagascar (ID 569) |
| 14:00 | FABRICE BLANCHARD ALLECHY, Futur impact of climate change on rainfed rice yields and adaptation strategies in Côte d'Ivoire (ID 585) |
| 14:10 | AMAHNUI GEORGE AMENCHWI, The effects of conservation-agriculture practices on soil greenhouse gas emissions in maize production systems in Buea, Cameroon (ID 662) |
| 14:20 | WRAP UP AND FINAL DISCUSSION |

3c. Biodiversity & neglected species

Room: Hörsaal 3/4

Chair: NORA CASTANEDA-ÁLVAREZ

[0.001/0.002]

- 13:30 **Lead paper:** CÉLINE TERMOTE, Nus at the nexus of biodiversity, climate and nutrition (ID 999)
- 14:00 MILKA KIBOI, Performance and yield stability of maize under a long-term experiment in the sub-humid tropics (ID 731)
- 14:10 EMMA TAMEZ MONTERO, Social-ecological restoration in the Brazilian Mata Atlantica: Implications on landscape connectivity dynamics (ID 844)
- 14:20 UYEN TRAN, Does sustainable aquaculture certification protect mangroves? Evidence from Vietnam (ID 290)
- 14:30 HUGO-ENRIQUE REYES-ALDANA, Citizen science for biodiversity monitoring and pathogen detection in coffee farms in the Dominican Republic (ID 714)
- 14:40 WRAP UP AND FINAL DISCUSSION

4c. Sustainable nutrition security

Room: HS 4 (Meckenh. Allee)

Chair: ASPASIA WERNER

- 13:30 VICTORIA KARIATHI, General self-efficacy and food literacy predict dietary quality in a changing food environment in Tanzania (ID 540)
- 13:40 REBECCA HORVATH, Sustainability of nutrition interventions to improve dietary diversity one year after project completion in Zimbabwe (ID 539)
- 13:50 ANNITAH USIDE KAGALI, Assessing local nutritional knowledge, perceptions, and acceptability of using locally available foods in the management of malnutrition among caregivers of children aged 12-59 months in Kisumu County, Kenya (ID 584)
- 14:00 MERRY LIANITA, The realisation of 'right to food' among Orang Rimba in Bukit Suban village, Sarolangun regency, Jambi, Indonesia (ID 343)
- 14:10 LAURA TERESA PÉREZ SILVA, Legume-driven agriculture: Changing paradigms to maximise agriculture's contribution to nutrition while enhancing agricultural sustainability (ID 238)
- 14:20 WRAP UP AND FINAL DISCUSSION

5c. Social learning and network

Room: Hörsaal 5/6

Chair: CORY WHITNEY

[1.001/1.002]

- 13:30 FARNOUSH FALLAHPUR, More than crops: how urban agriculture cultivates social cohesion (ID 702)

- 13:40 ERWAN SACHET, Harnessing youth through participatory action research for transformative territorial health solutions (ID 751)
- 13:50 PETER ASARE-NUAMAH, Fostering innovation upscale through social learning and gender-responsive theory of change: lessons from interfaces project (ID 580)
- 14:00 MICHELLE CHEVELEV-BONATTI, Uncovering decolonial pedagogies for learning agroecological transitions: Comparative analysis of South America cases (ID 185)
- 14:10 VRINDAJA VIKRAM, Navigating opportunity spaces: Understanding behavioural change towards agroecological transitions in Mandla, India (ID 370)
- 14:20 DORCAS SANGINGA ALAME, Assessing the impact of social networks on the adoption of integrated soil fertility management in northern Ghana (ID 635)
- 14:30 WRAP UP AND FINAL DISCUSSION

6b. Development economics

Room: HS 2 (Meckenh. Allee)

Chair: EVA SALVE TINO BACUD

- 13:30 MARIO CONTRERAS, Balancing act: A meta-analysis of ecological and economic outcomes in Latin American tropical agriculture (ID 742)
- 13:40 VINCENT MOSETI, Socioeconomic impacts of road infrastructure development in Kenya (ID 761)
- 13:50 JOSEPH ALULU, Linking entrepreneurial orientation dimensions with retailer procurement strategies: A generalised structural equation modelling (ID 156)
- 14:00 BONNA ANTOINETTE TOKOU, Ecosystem services and living income: Assessing their contribution to cocoa farmers' livelihoods in Côte d'Ivoire (ID 271)
- 14:10 HANNA HODEL, Understanding network formation of rural entrepreneurial households in sub-Saharan Africa (ID 495)
- 14:20 EMIL BEGIMKULOV, Credence attributes and consumer willingness to pay: A cross-country analysis of dried fruit and nut markets in Central Asia (ID 536)
- 14:30 WRAP UP AND FINAL DISCUSSION

7a. IITA session

Room: Hörsaal 7 [1.004]

Chair: JOHN CHOPTIANY

13:30 **Welcome words:** SIMEON EHUI, Regional Director, Africa, CGIAR, and Director General of IITA
BERNARD VANLAUWE, Deputy Director General, Research for Development IITA

This session will showcase the pioneering scientific work of the International Institute of Tropical Agriculture (IITA) in climate mitigation and adaptation, emphasising how interdisciplinary research and innovative agricultural strategies are creating and delivering impact in helping smallholder farmers to navigate the challenges of climate change. The spotlight will be on IITA's research innovations that empower smallholder farmers, offering new opportunities through integrated farming practices that foster resilience and sustainability.

This concept note describes a format for discussion how IITA is addressing the theme of “Reconciling Land System Changes with Planetary Health.”

Keynote Introduction

JOHN CHOPTIANY, Climate Adaptation Expert, IITA, "Facing the Climate Challenge: The Role of Interdisciplinary Research in Agricultural Innovation"

Soil Health and Agronomy

FRANK RASCHE, Soil Health Scaling Expert, IITA
LAVA KUMAR, Plant Health Program Leader, IITA

The Science of Scaling Innovations

THERESA AMPADU-BOAKYE, Monitoring and Impact Specialist, IITA

Interactive Q&A Session with the audience

Moderator: JOHN CHOPTIANY, Climate Adaptation Expert, IITA

Oral presentation sessions IV – 15:30-17:00

1c. Crop biotic stress

Room: Hörsaal 1

Chair: STEPHAN WINTER

- | | |
|-------|---|
| 15:30 | FATHIYA KHAMIS, Molecular tools for sustainable management of invasive / indigenous pests for food and nutritional security in Africa (ID 732) |
| 16:00 | ESTHER S. IBRAHIM, Simulating pest risks and impact in maize production outlooks for Nigeria under climate change (ID 451) |
| 16:10 | TASNEEM OSMAN, The hidden link: How invasive flora fuels mosquito-borne disease transmission (ID 564) |
| 16:20 | CHRISTOPHER TOBE OKOLO, Ecological characterisation of indigenous entomopathogenic nematodes against <i>Spodoptera frugiperda</i> in Nigeria (ID 283) |
| 16:30 | SAMAR SHEAT, Mapping the path to resistance: Genetic and molecular strategies against cassava brown streak disease (ID 957) |
| 16:40 | WRAP UP AND FINAL DISCUSSION |

2c. Amendments & nutrient management

**Room: Hörsaal 3/4
[0.001/0.002]**

Chair: KIRA FASTNER

- | | |
|-------|---|
| 15:30 | BERNHARD FREYER, Conceptualizing the restoration of nutrient and carbon stocks and their seasonal provision to meet crop demand (ID 214) |
| 15:40 | CÉLIA BÜHLER Closing the loop: Composting coffee co-products for sustainable soil fertility in northern Nicaragua (ID 331) |
| 15:50 | GERONIME MARLENE HOUETO Fertiliser microdosing: A cost-effective approach to enhancing cereal yield in smallholder farming systems of sub-Saharan Africa (ID 953) |
| 16:00 | THUY HUU NGUYEN, Simulating maize responses to different fertilisers of two crop models in multi-locations in West Africa (ID 508) |
| 16:10 | MASABO JEAN LUC TUYISENGE, Compost and biochar improve crop productivity and carbon binding in different agro-ecological zones of Rwanda (ID 504) |
| 16:20 | WRAP UP AND FINAL DISCUSSION |

3a. Perspectives on agroecology**Room: Hörsaal 2****Chair: DANIEL NEUHOFF**

- 15:30 QUENTIN THEIVA À HAUARIKI, Value chain analysis of cover crop seeds to scale agroecology: A case study in Battambang Province, Cambodia (ID 398)
- 15:40 INGRID FROMM, Impact of agroecological innovations on agricultural production and the environment in the foothills of Mumirwa, Burundi (ID 502)
- 15:50 MALENA TORRES ULLOA Cash crop diversity and erosion control across smallholder farms in coastal Ecuador: A spatial assessment (ID 590)
- 16:00 GBÈGNIDAHO MÈGNISSÈ BIGNON INÈS JUSTINE ZOHOUN, Enhancing smallholder food security through on-farm tomato-onion intercropping under agroecological practices in Benin, West Africa (ID 387)
- 16:10 STEFAN HAUSER, Cocoa production in Liberia: Current status and prospects of reviving the sector (ID 789)
- 16:20 ADÉGBOLA PLACIDE AFOUDA, Tailoring agroecological practices to the family farm in cotton zone: Unveiling farms' constraints and motivation (ID 854)

3d. Rangelands and forages**Room: HS 2 (Meckenh. Allee)****Chair: THOMAS BRINGHENTI**

- 15:30 ADRIANA GONZÁLEZ GONZÁLEZ, The role of NGOs promoting nature based solutions in ranching landscapes of Chiapas, Mexico (ID 356)
- 15:40 HARON AKALA, How herders use vegetation thresholds to guide herding decisions among Rendille pastoralists in northern Kenya (ID 678)
- 15:50 SABINE BAUMGARTNER, Big tree, big impact - how we can use trees to maintain rangelands' forage provision (ID 765)
- 16:00 SALA LAMEGA, Virtual fencing: An advanced solution for sustainable livestock-grazing systems in sub-Saharan Africa? (ID 821)
- 16:10 LISA-MARICIA SCHWARZ, Land-use history mediates responses to global change drivers in a semi-arid rangeland (ID 842)
- 16:20 STEFAN LIEHR, How to stabilise a rangeland social-ecological system: Case study from the Waterberg area, Namibia (ID 685)
- 16:30 WRAP UP AND FINAL DISCUSSION

4d. Food quality & processing**Room: HS 4 (Meckenh. Allee)****Chair: JAN BANOUT**

- 15:30 KHALIFA BABACAR SYLLA, Aflatoxin contamination in industrial ruminant feed and milk: Assessing health risks in Dakar's peri-urban dairy farms (ID 80)
- 15:40 LISETTE PHELAN, Implications of low-quality milk for processors and public health in Kenya (ID 619)
- 15:50 MATTHEW ATONGBIK ACHAGLINKAME, Phytochemical composition of coagulants used in West African soft cheese processing (ID 455)
- 16:00 MOHAMMAD MOHI UDDIN, Assessment of milk quality endowment in the supply chain in Bangladesh: Implications for developing bio-economic model (ID 802)
- 16:10 RACHEL BYARUGABA, Safety, nutritional and sensory quality of fermented and refractance window dried *Amaranthus cruentus* leaves (ID 607)
- 16:20 WRAP UP AND FINAL DISCUSSION

5a. Governance and local livelihoods**Room: Hörsaal 5/6****Chair: TILL STELLMACHER****[1.001/1.002]**

- 15:30 NDUNGU S. NYOKABI, Living labs and citizen science approaches: empowering communities in research aimed at driving societal change (ID 618)
- 15:40 ANINDITA SARKAR, Water insecurity and agrarian fragility in Nepal's highlands: Navigating climate change and governance challenges (ID 519)
- 15:50 MALIT YUSUF WAKO, Evolving resource governance in pastoralist societies: The enduring power of elders despite emerging institutions in northern Kenya (ID 829)
- 16:00 LOUIS PHILIPP SCHWARZE, Investigation of governance and innovation processes in dairy cooperatives in Kenya (ID 825)
- 16:10 JANIKA HÄMMERLE, Rethinking fire governance in fire-prone ecosystems: Stakeholders perspectives and conflicts over traditional fire-use in Paraguay's grasslands and savannahs (ID 843)
- 16:20 MARIA RESTREPO, Making room for feedback: operationalising trans-disciplinary research with pastoralist communities in Kenya and Namibia (ID 737)
- 16:30 WRAP UP AND FINAL DISCUSSION

7c. Strengthening health and resilience of local food systems in times of multi-layered crises (BMLEH)

Room: Hörsaal 7 [1.004]

Chair: CHRISTINE HBIRKOU

Moderator: DR. CHRISTINE HBIRKOU

Welcome words: MAJA CLAUSEN (Division 123 – General and Fundamental Research Issues, Coordination of Research) and DR. LISA JÄCKER-ING (Division 624 – Right to Food)

Presentation of projects:

Project 1: ICRAFS (IAMO) - Presenter: MAWUSSI KOSSIVI SOVIADAN, Senior Scientist: PROF. DR. OSAMA NASER EL-DIN AHMED

Project 2: REFS (Uni Kassel) - Presenter: DR. JOHN MULWA NDISYA

Project 3: Orphan-Crop (Humboldt- Universität Berlin) – Presenter: PRISCA-ELIFURAHA KIMARO

Discussion

Discussion between different projects and presenters (Junior and Senior Scientists)

Questions from the audience

Selected research projects for the session:

The following three projects should be the focus of the BMLEH session. All projects deal with the effects of different crises and suitable adaptation strategies to improve local nutrition and strengthen resilience.

The focus is on the consequences of climate change, the COVID-19 pandemic and the Russian war of aggression against Ukraine. The various starting points of the selected projects for the investigation and development of suitable strategies show the different facets of complex crisis situations. This should provide a good basis for a subsequent exchange on system-oriented solutions during the session.

Poster sessions P2 – 17:15-18:45

1b. Crop abiotic stress

Room: Tent

Chair: MATTHIAS WISSUWA

- 814 | ANNABELLE HEID | Can intercropping of cowpea and amaranth improve crop performance under drought conditions in Kenya?
- 520 | DAYASAGAR KOYADA | Responses of two sweet potato clones to bed and nutrient management in Satkhira, Bangladesh
- 277 | MUHAMMAD MUDASIR | Genetic variability and multivariate evaluation of mungbean genotypes for heat stress tolerance and yield stability
- 793 | DEENA THANKACHAN | Remote sensing-based assessment of heat stress tolerance in tropical bread wheat using spectral reflectance indices
- 889 | GECKEM DAMBO | Potential of hyperspectral sensing for rapid screening of spring wheat exposed to drought stress
- 912 | ANNKATHRIN ROSENBAUM | Assessing winter crop effects on soil salinity in Andalusian rice fields via sentinel-2 imagery
- 914 | NORINA MURTAZA | Does UVB seed priming affect different traits in rice genotypes under drought stress?
- 669 | BINDUSREE KARNATI | Harnessing radiation use efficiency using spectral reflectance indices for climate-resilient wheat improvement in CIMMYT international nurseries
- 170 | ANNA TABEA MENGEN | Comparing phenotyping systems for salinity tolerance in quinoa (*Chenopodium quinoa*) across phenological stages
- 690 | GECKEM DAMBO | Evaluation of drought effects on field-grown spring wheat canopies via spectral reflectance indices
- 437 | HAJAR MOJAHID | Assessing frost risk perception and adaptation in Moroccan orchards: Insights from a survey in the Fes Meknes region
- 224 | SANTOSH BHANDARI | Production practices and performance attributes of highland rice cultivars along an altitude gradient, Nepal
- 236 | JOHANNA VOLK | Exploring salinity management: Effects of potassium source on sweetpotato irrigated with saline water

2c. Amendments & nutrient management

Room: Tent

Chair: KIRA FASTNER

- 617 | DORCAS SANGINGA ALAME | Opportunities and challenges in crop residue management: Implications for integrated soil fertility management adoption in northern Ghana
- 666 | NAKARIN JEEATID | Optimising nitrogen form ratios for enhanced growth, yield, and fruit quality in processing tomato (*Solanum lycopersicum*)
- 434 | KARL-LOÏC MAWUSSÉ ICOUTCHIKA | Creating value from waste: Consumer acceptance of pig manure fertilisers in sub-Saharan Africa urban agriculture
- 915 | GERONIME MARLENE HOUETO | Agronomic and economic performance of fertiliser microdosing in the shea-maize agroforestry parklands of Benin
- 949 | ALEX ABOAGYE BAMPOH | Incentivising the adoption of integrated soil fertility management in smallholder farming communities in northern Ghana

- 176 | NUTTAPON KHONGDEE | Enhancing soil fertility and polyphenol composition in high-land arabica coffee through agricultural biochar application
- 760 | TANDU RAMBA | The organic fertilisers effect on local chili Katokkon as a climate change adaptation in Indonesia
- 796 | KOFI ATIAH | Improving degraded coastal acrisol with biochar and compost enhances soil quality and carbon storage
- 833 | DAYASAGAR KOYADA | Sustainable salinity management: Biochar boosts sweet potato growth and antioxidant responses in coastal agroecosystems
- 556 | SIRIKI FANÉ | Decomposition and nutrient release patterns of leafy biomass-derived sheep manure from tree/shrub species in the Sudano-Sahelian zone of Burkina Faso, West Africa

3d. Rangelands and forages

Room: Tent

Chair: THOMAS BRINGHENTI

- 807 | GUNNAR DRESSLER | Exploring livelihood security and looming desertification in Namibia's communal rangelands using an agent-based model
- 823 | HALKANO GALMA BONAYA | Evolving information needs for rangeland resource management among Borana and Rendille pastoralists in northern Kenya
- 827 | LOUIS PHILIPP SCHWARZE | "The colour of money" – analysis of the innovation process of the Sahiwal breed among Maasai pastoralists in Kenya
- 359 | WALTER BARESEL | Permanent pastures as an alternative land use model for marginal farmland in Andhra Pradesh (India)
- 464 | SÈWANOU FRIMENCE ALLOGBÈNOU TOSSOU | Management of indigenous pastures and cattle herds by Fulani in northern Benin
- 727 | ESTHER OJONUGWA OGBOLE | Carbon feels like cash cropping: Pastoralists' perceptions of rangeland carbon projects in Kenya
- 110 | MICHAEL PETERS | Forage grasses evaluation in different agro-ecological zones in Tanzania
- 114 | SEBASTIAN SCHMIDT | Monitoring of pastoral landuse systems in East African rangelands using GPS data and a hidden Markov model
- 121 | MICHAEL PETERS | Evaluation of new forage legume varieties for dissemination in Vietnam
- 757 | WILHELMINA NUULE | Reproductive performance of cattle breeds in Kunene North: Insights from Himba pastoralists
- 877 | LILLI SCHEITERLE | Beyond the market: Understanding herd off-take dynamics among Himba pastoralists
- 877 | SERGIO BOLÍVAR-SANTAMARÍA | The role of protected areas in conserving lowland grassland and savannah ecosystems in Latin America

4b. Sustainable food systems

Room: Tent

Chair: CECILIA MAINA

- 905 | SENOUR AHMADI | A systematic review of research on organic agricultural products in Iran: Trends, challenges, and policy implications

-
- 171| EMIL BEGIMKULOV | Traditional and modern consumption patterns of dried fruits and nuts in Central Asia: A cross-country analysis
- 179| MD SOFIULLAH | Socio-economic assessment of existing agroforestry production systems for fruit and nut production in Uzbekistan
- 281| NOVIRIA SYIFAUN NAFSI | Decision analysis of the transition from rice to vegetables in upland areas of Indonesia
- 341| FARDOUS ARA HAPPY | Exploring technical efficiency in Bangladeshi dairy farms: Uncovering regional and market disparities
- 530| VICTORIA KARIATHI | Does land use decision-making affect food security in rural farming households? evidence from Tanzania
- 559 | EWARD MUSHI | Economic drivers of household food choices: income elasticity of food demand in selected urban and rural districts of Tanzania
- 840 | MSABILA DAMIAN CHARLES | Lost in transition? Health literacy as a key to combat malnutrition in Tanzania
- 835 | LOUIS PHILIPP SCHWARZE | Creating an enabling environment for food system innovation - An analysis of the Kenyan livestock innovation system
- 332 | Héloïse Schmutz | Agroecological practices in home and kitchen garden for food and nutrition security
-

5a. Governance and local livelihoods

Room: Tent

Chair: TILL STELLMACHER

-
- 794 | CHRISTINE BOSCH | Communities and capital: Exploring Indian-Ethiopian large-scale land investments
- 622 | ROBERT SCHÄFER | Governance challenges in the Ugandan coffee seed system
- 233 | AXEL PRESTES DÜRRNAGEL | Can co-management stop deforestation? Governing land use changes in the western Amazon of Brazil
- 425 | JULIA HAURI | Social and institutional factors shaping farmers' adaptation to groundwater depletion in Madhya Pradesh, India
- 304 | KEERTHANA SRI KRISHNAN SATHYABAMA | What information is relevant to pastoral women related to milk management?
- 441 | EVANS KISSI | Can private companies in the EU reduce child labour in West Africa cocoa through mandatory regulations?
- 488 | SEBASTIAN RICHTER | Beyond adoption: Understanding innovation disadoption among smallholder farmers in rural Tanzania
- 671 | MAREIKE AUFDERHEIDE-VOIGTS | Changing grounds: community perspectives on rangeland governance and livestock management in eastern Namibia
- 947 | ANNIE HILDA ONG'AYO | Documenting farmer-led knowledge co-creation in horticultural systems in farmer field schools in Senegal and Kenya
- 932 | CARMEN MARÍA ARACELI MONGES | Governance and development of Paraguay's carbon market: An institutional and cultural analysis
- 220 | JULIETA LOAIZA LÓPEZ | Role of NGOs in incentivising the adoption of sustainable land management practices in northern Ghana
-

5d. Bridging farmer innovation and digital co-design

Room: Tent

Chair: MARIA RESTREPO

- 52 | KATHARINA SCHILLER | Scaling sustainable agricultural practices through innovation hubs in southern Mexico
- 265 | GABRIELA MORALES AGUILAR | Rural women's capacities facing water overexploitation and soil erosion at the independence watershed in Guanajuato, Mexico
- 311 | MOZELLE RAMOS | Assessing agri-tech support for smallholder farmers in the Philippines: A multi-criteria gap analysis
- 933 | ROKHAYA FATIAKH GUEYE | Understanding knowledge co-creation in agroecological learning: Farmer field schools in arbo-market gardens in Senegal
- 320 | SCOTT EDWARD AGYEMANG | The role of key players in the stimulation of demand for agricultural technologies in Ghana
- 627 | JOHN ILUKOR | The principal-agent problem in agricultural extension service: A case of dissemination of soil test results in Uganda
- 194 | MARIA OGUCHE | Scaling, adoption and dissemination of good agricultural practices and innovations for food systems in Africa
- 450 | JANE MAUREEN NGONJOCK EBAKO | The impact of knowledge sources for climate-smart agriculture on farmers' income stability in northern Togo
- 126 | JOSHUA OKONYA | Stakeholder perspectives on enhancing the use of satellite-based products and services in smallholder African agriculture

6c. Science policy

Room: Tent

Chair: JULIET WANKJIKU KAMAU

- 772 | MICHAEL HAUSER | Purpose-driven partnerships for ecosystem rehabilitation in fragile environments: insights from expert interviews across the greater horn of Africa
- 531 | HUSNUL KHOTIMAH | Sustainability challenges and opportunities in the Batur UNESCO Global Geopark: Integrating socio-economic activities and environmental conservation
- 803 | MAHDI RAFATI | Market power in the seed sector: Challenges to innovation, diversity, and food security
- 565 | MIRNA ASNUR | Foundation for social forestry adoption in Aceh, Indonesia: Insights from field assessments and stakeholder perspectives
- 882 | SIMONA TOMANOVÁ | Assessing labour rights: Child's involvement in cashew production in Cambodia
- 717 | FRANK RASCHE | Policy and agronomy research as catalysts for implementing Africa's fertiliser and soil health action plan
- 206 | CARLA BALDIVIESO | Historical land use change and statecraft in South America: Shaping agroecological transitions
- 286 | SHILPI KUNDU | Farmers' perspectives on climate-resilient agriculture for food security: Bridging the gap between policy and practice in coastal Bangladesh

6d. Land system changes

Room: Tent

Chair: HANNAH JAENICKE

- 791 | ARNAUD KENTSA KENFACK | Performance of coordination-based incentives for biodiversity conservation: Application of framed field experiments in Tanzania
- 537 | MARCELO INACIO DA CUNHA | Towards rights-centered conservation for and by Indigenous Peoples and Local Communities: The case of Amazônia
- 809 | BOAZ S WASWA | Evaluating land management options for transitioning to regenerative coffee systems in Kenya
- 818 | MD AMIRUL ISLAM | Trajectories of crop intensification in rice-based systems of coastal Bangladesh
- 310 | FREEMAN NSOH AKARIBO | The role of crop and farm system modelling in supporting agricultural resilience and sustainability in sub-Saharan Africa: A systematic review
- 96 | TESFAYE BERHANU WOLDEYOHANES | Understanding the patterns and drivers of adoption of land restoration practices: Evidence from seven African countries
- 371 | PRINCE ASIEDU | Transitioning toward sustainable intensification: The adoption of zero/minimum tillage among smallholder farmers in northern Ghana
- 891 | DAISY MUTUKU | Trends in land use in the face of *Parthenium* invasion in Kenya
- 657 | HOA BUI THI KHANH | Farmers' decision-making: iterative model validation and livelihood alternatives for agricultural land in peri-urban Hanoi
- 177 | CORY WHITNEY | Regenerative agriculture for planetary health: Empirical assessment and probabilistic modelling of soil, agronomic, and economic outcomes in Kenya
- 604 | MAUREEN NABATANZI | Role of climate and land-use changes in the risk of emerging mosquito-borne zoonotic diseases in Africa

7d. DAAD Alumni seminar II

Room: Tent

Chair: Nora Janson

- 987 | SYED NABEEL HUSNAIN | Smart and sustainable dairy processing: transforming Pakistan's dairy supply chain by solar-assisted decentralised approach
- 988 | MARIA ISABEL RUIZ MUNOZ | Landscape, local leadership, and gender: keys to food systems transformation from the experience of heifer Mexico
- 989 | JEPRIANTO MANURUNG | Green shrimp in Indonesia's degraded mangroves: A sustainable ecofarm initiative
- 990 | LIZA MELINA MEZA FLORES | Policy and practice synergies in Carabayllo's family farming: A pathway to food security and biodiversity conservation?
- 991 | SOLANGE DZEKEWONG NDZESHALA EPSE TAKWI | Adoption of microbial biotechnology in sustainable agriculture and environmental remediation in the circular economy
- 992 | ULTILE MUCHIVETE | Evaluating grain yield stability of soybean (*Glycine max* (L.) Merr.) genotypes using gge biplot analysis across three environments in Zambia
- 225 | KELVIN WACHIRA NJENGA | Catalyst-enhanced biomass gasification for agroecological energy transitions in Africa

-
- 994 | SANAA AL-ZYUOD | Application of geothermal energy for sustainable agriculture and food security in Jordan
- 995 | ERIKA LUCIA ARIAS RAMIREZ | Contemporary agri-communitarian reserves: human right to food and responsible land tenure
- 507 | ADACHUKWU OBAGHA | Malaria transmission dynamics and insecticide resistance of *Anopheles funestus* during indoor spraying in northern Ghana
- 762 | SHAMISO MUCHAYI | Sustainable valorisation of agricultural waste: Repurposing spent oyster mushroom substrate as a safe livestock feed
-

Online 1a. Crop management

Streaming in room: Hörsaal 1

-
- 27 | CHADRA MOREEN GAMA | Assessing the impact of sustainable input intensification on crop production and household income in Malawi
- 867 | KRITI SHARMA | The adoption and impact of direct seeded rice in eastern India
- 874 | HYCENTH TIM NDAH | Unlocking sustainable intensification: Farmer insights from Senegal's river valley
- 134 | MITIKU AYELE HANDISO | Evaluating the impacts of *Sesbania sesban* and *Cajanus cajan* hedgerow spacing and pruning incorporation on cassava (*Manihot esculenta*) yield and soil fertility in southern Ethiopia
- 429 | ALAIN KAGISYE | Determinants of the physical and sensory quality of coffee in small-holder farms of Burundi
- 439 | MOHAMMED WORKU ADEM | Pruning and fertilising effects on yield and yield components of arabica coffee in its centre of origin in southwest Ethiopia
- 202 | ADETOMIWA KOLAPO | Climate-smart agriculture as a pathway to resilience against climate change vulnerability: Exploring its mediating effects on productivity and food security in Nigerian maize farming households
- 181 | MARK UMUNNA AMADI | Prospects of organic farming by yam farmers in Ebonyi state Nigeria
-

Online 1d/1e. Livestock management

Streaming in room: Hörsaal 3/4

-
- 865 | YUSTO YUSTAS | Enhancing livestock marketing by small-holder livestock farmers through software-as-a-service (SaaS) framework in Tanzania
- 968 | OGUNSUYI OPEYEMI BABATUNDE | Ameliorative effects of dietary inclusion of selenium biofortified African eggplant (*Solanum macrocarpon* L.) leaves against impaired brain and kidney redox status in rats fed selenium-restricted diets
- 594 | MUHAMMAD LAWAL | Methane emissions of Yankasa sheep fed with two different dietary concentrate levels
- 479 | AURA BRAVO | Opportunities to promote cattle breeding in northwest Vietnam: A business model approach
- 600 | MUHAMMAD LAWAL | Effect of supplementation with selected medicinal plants on in vitro methane production
- 361 | DÍAZ BACA MANUEL FRANCISCO | Sustainable livestock and the 2030 agenda: Mapping synergies and trade-offs across global practices
-

-
- 626 | DALIA ANDREA PLATA-REYES | Agroecological performance of smallholder dairy farms in central Mexico
- 610 | LUCY RUTH REMIGIO LORENZO | Genetic diversity of the beta-casein gene in Brown Swiss cows from the Central Andes of Peru
- 115 | JESÚS FERNANDO FLOREZ | Social value of mitigation on Kenyan dairy farmers: Knowledge, perception, and willingness to act
- 680 | SHADHA AL-AUFI | Effect of feeding *Azolla* on performance and blood parameters of ruminant livestock: A systematic review
- 198 | DANNY FERNANDO SANDOVAL | Livestock farming in Honduras: Adoption levels, challenges, and gender gaps in the transition toward sustainable systems
- 969 | ADENIKE ABIODUN ADEYEMI | Influence of diet variability on gonadal development in heterogeneous rabbit stock during rainy season in southwest Nigeria
- 485 | SOLOMON MWENDIA | Estimating forage seed requirements to close ruminant feed gaps in Africa
-

Online 2a. Soil health

Streaming in room: Hörsaal 5/6

- 517 | ISABEL MORALES-BELPAIRE | Bacterial communities in decomposing litter from cacao and shade trees in a long-term agroforestry trial
- 801 | FAPAILIN CHAIWAN | Effect of soil bulk density on saturated hydraulic conductivity
- 582 | RATTANAPHON CHAIMA | Photosynthetic bacteria enhance cherry tomato yield and quality while promoting sustainable agriculture
- 98 | JALAL HSAINE | Enhancing potato productivity and soil health through digestate application: A circular approach for sustainable agroecosystems in Morocco
- 643 | MICHAEL ASANTE | Influence of Keneka SK bio-stimulant on yield of maize in the savannahs of Ghana
- 675 | SANGHYO MOON | Comparison of global soil databases with measured soil data across western Germany and northern Ghana
- 736 | SUSAN MURIUKI | Nitrogen forms and cropping systems influence soil prokaryotic diversity in organic and conventional farming trial
- 501 | NDIYE MAGUETTE HANE | Integration of agrosystems with mycorrhizal shrub *Guiera senegalensis* in Sanghaïe (Niakhar - Fatick), Senegal
- 291 | TIGIST ARAYA GESSESSE | Interaction of legume tree and legume crop for improved crop productivity and soil fertility
- 630 | ALEX MORULENG | Farmers' willingness to pay for soil testing in Uganda: Unpacking the effect of principal-agent problem in agricultural extension
-

Online 4a/4b/4c/4d. Food systems and nutrition

Streaming in room: Hörsaal 7

- 550 | ELINA MUHOMBA | Personal food environment and dietary patterns among urban poor communities in Tanzania
- 63 | RHOWELL JR. TIOZON | Low glycemic index rice: a healthier diet for countering diabetes epidemic in Asia
-

- 664 | ISHWOR BARSHILA | Household food security, out-migration and remittance nexus: Empirical evidence from rural mid-hills of Nepal
- 745 | LAURENSI MEITY SASUBE | Improving Students' knowledge about healthy snacks using audiovisuals
- 570 | JAYSHRITA BHAGABATI | Determinants of food insecurity among Tanzanian school children: A cross-sectional study of self-reported experiences
- 199 | DÍAZ BACA MANUEL FRANCISCO | Between challenges and opportunities: Traceability as a key to sustainable livestock farming in Colombia
- 579 | TEMESGEN LAELAGO ERSEDO | Response of ginger (*Zingiber officinale*) genotypes to post-harvest management technologies in Ethiopia
- 466 | SHAMSEDIN MAHDI HASSAN | Effect of nixtamalisation on the nutritional, anti-nutritional, functional, physicochemical, and mineral properties of maize (*Zea mays*) tortillas
- 506 | WIGDAN OMER | Household cross-sectional survey on chicken meat preparation: Hazard, KAP and use of NOFA in Rwanda

Online 6a/6b. Innovation economics

Streaming in room: Hörsaal 2

- 597 | CHRISTINE KANYENYERI | Adoption, complementarity and productivity effects of modern inputs: evidence from the e-voucher subsidy programme in Uganda
- 70 | SIMBARASHE Jombo | Remote sensing for predicting maize yields in South Africa to enhance food security
- 830 | KARTIK KHERA | Cost and efficiency analysis of drone-based transport in hilly terrains
- 815 | MARCEL JOCELYN WENDEMI MICHAELANGE TOÉ | TempQC: An interactive ai-powered application for quality control of climate temperature data
- 55 | OLADELE OSANYINLUSI | Digital financial literacy and services among agricultural produce marketers in Oyo state, Nigeria
- 555 | WIOMOU JOÉVIN BONZI | Smart control of mechanical oil pressing using deep reinforcement learning
- 545 | XAVIER BADO | Development of a rainfall nowcasting model: The case of Burkina Faso
- 937 | LA THI THAM | Assessing the status of farmers' digital transformation in tea production and consumption: Case study of Son Duong district, Tuyen Quang province
- 787 | RICARDO VARGAS-CARPINTERO | Understanding novel value chains and webs of the macauba palm, an alternative oil crop in Brazil
- 790 | DOMINIC BOATENG-GYAMBIBY | Unravelling farmer preferences for contract design attributes in Ghana's agricultural sector: A discrete choice experiment approach
- 111 | ELIZAPHAN RAO | A farmer group model to promote innovation uptake and market access for cattle and pig value chains in northwest Vietnam
- 920 | KAMGA BOUBDA ARMEL RODRIGUE | Consumer's willingness to pay for healthier par-boiled rice in Africa: An homegrown experimental action approach
- 107 | JOHN JAIRO JUNCA PAREDES | Potential markets for hybrid forages in Latin America and the Caribbean

-
- 956 | PRANEETH TALAM | Sustainable production of turmeric in Andhra Pradesh: Production – processing – marketing and premium pricing for NF produce
- 973 | HANNAH EHRLICHMANN | Colonial legacies and persisting global trade inequalities: The case of German - Cameroonian forestry since 1892
- 478 | AURA BRAVO | Market outlook for improved forage seed varieties in northern Lao PDR
-

Special event – Conference dinner and Party at Campusmensa Poppelsdorf (CAMPO) from 19:00 to 23:00



© Studierendenwerk Bonn / Volker Lannert

The university canteen, located just a few minutes from the conference venue, will host the conference dinner on the first floor, followed by the party on the ground floor.

The dinner will begin at 19:00, followed by the party at 20:00. Get ready for vibrant international music to dance to — from African and Latin American rhythms to Indian beats and English hits!

- Date: September 11, 2025 (Thursday)
- Start Time: 19:00 h
- Venue: Campusmensa Poppelsdorf (CAMPO)
- Walking distance: 350 m (see Campus Poppelsdorf map)
- (With pre-booking only)

Programme overview– Friday 12.09.2025

08:30-10:00	Poster & Online sessions P3	Tent
10:00-10:30	<i>Coffee and tea break</i>	<i>Tent</i>
10:30-11:30	Plenary – Keynote session	Hörsaal 2
11:30-12:00	Conference review, JOACHIM VON BRAUN	
12:00-12:10	Photo competition - best photo / best photo series	
12:10-12:20	Conference review by the student reporters	
12:20-12:30	Poster awards	
12:30-13:00	Closing remarks and handing over to the University of Göttingen, Germany	

End of Tropentag 2025

FRIDAY 12.09.2025

Poster & Online sessions P3 – 08:30 - 10:00

1a. Crop management

Room: Tent

Chair: IXCHEL HERNANDEZ-OCHOA

- 138| MICHAEL PETERS | Performance of *Crotalaria juncea* and *Lablab purpureus* in three agro-ecologies of Kenya
- 274| LOTTE WOITTEZ | Intercropping immature oil palms with food crops: Effects on oil palm growth
- 567| SEBASTIAN HEINTZE | Combined effects of vapour pressure deficit and nitrate to ammonium ratio on the growth of *Chenopodium quinoa* in hydroponics
- 344| LEONE FERRARI | Productivity and land use efficiency of seven finger millet cropping systems in Chad
- 613| PACSU SIMWAKA | Arrangement, timing, and synergy: Rethinking maize-soybean intercropping for productivity gains in Southern Africa
- 476| TANDU RAMBA | Assessing the effect of pruning on growth and yield enhancement in climate-resilient rice farming practices in coastal flood-prone area
- 511| THUY HUU NGUYEN | Multi-location evaluation of ORYZA2000 model in simulating anthesis and maturity dates of rice varieties in Bangladesh
- 758| ADAM MUHAMMAD ADAM | Adaptation of the LUCIA model to simulate maize-legume intercropping systems in sub-Saharan Africa
- 649| DESMOND AGBLEKE | Utilising soilless media and axillary stem cuttings for sustainable tomato (*Solanum lycopersicum*) production

1e. Animal production

Room: Tent

Chair: REGINA RÖBLER

- 709| CARMEN LINDLOHR | Relationships among enteric methane, body-surface temperature, and body condition score in tropical smallholder dairy cattle
- 257| KWAMBOKA TIRIMBA | Using a laser methane detector to assess enteric methane emissions from Indian indigenous dairy breeds
- 358| GARIMA DIGDARSHIKA | Bridging the breeding gap: Tackling reproductive inefficiencies in India's smallholder dairy sector
- 3| DERRICK NOAH SENTAMU | Pastoralists' preferences during livestock disease reporting and response in northern Kenya: A participatory study
- 558| NAMDEV UPADHYAY | Adoption of improved buffalo breed and its effect on milk productivity and household revenue
- 596| GONZAGA SSEKIBAALA | Opportunities and challenges of A community-based bull breeding programme in the pastoral regions
- 845| ELIZAPHAN RAO | Beyond conventional livestock extension: Impacts of personalised advisory support on smallholder dairy farmers in Kenya
- 216| HASSANUR HASSAN KALLA | Management- and resource-based factors with potential influence on dromedary camel milk production and health
- 223| BERHANU WAKJIRA | Camel health management practices and helminth infections in pastoral systems in Ethiopia
- 253| LUKAS MINOGUE | Strengthening monitoring systems for AMU and AMR in cattle production systems in South Kivu, D.R. Congo
- 948| MOHAMMAD MOHI UDDIN | Food loss and waste and its economic and climatic resilience on the dairy business in southwest of Bangladesh

2d. Climate change adaptation & mitigation

Room: Tent

Chair: AMIT KUMAR SRIVASTAVA

- 514 | ALBERT BERDJOUR | Effect of climate change on mixed crop-livestock systems in the Sudan savannah of West Africa
- 778 | SAIDAQA AYAR | Exploring the impacts of climate change on food security and household income: A CGE model approach
- 324 | MARIETTE AGBOHESSOU | Continental analysis of climate change impacts on baobab across major climate zones in sub-Saharan Africa
- 859 | IRENE KADZERE | Indigenous climatic indicators for early warning in semi-arid smallholder farming of Zimbabwe
- 868 | YVONNE AYARIBIL | Effect of amorphous silica (ASi) on N fertiliser induced GHG emissions for different, major agro-ecological zones of West Africa
- 146 | FRIEDERIKE KHALILI | Business models for scaling soil health: Assessment of carbon farming projects in Kenya
- 930 | MADINA DIANCUMBA | Regional scale biophysical assessment of potential for sustainable intensification
- 684 | CHRISTINE ALTENBUCHNER | Agri-food transformation – how can value chain actors foster climate resilience?
- 944 | YOSEPHINE AVI AYU REMBULAN | Navigating uncertainty: What drives farmers' resilience to adapt in multi-disaster regions?
- 482 | HARISON KIPLAGAT KIPKULEI | Employing micro-scale household surveys for agricultural systems analysis and examining production drivers in sub-Saharan Africa
- 767 | RODOLPHE AZIZI | Impacts of climate variability and multiple fertilisation strategies on rainfed maize production in sub-Saharan Africa: Insights from 40 years of DSSAT modelling

3a. Perspectives on agroecology

Room: Tent

Chair: DANIEL NEUHOFF

- 522 | SUSAN ANDREW MBACHO | Agroecology and mechanisation on selected congregation farms in Tanzania
- 113 | JOHN AWENVA | Exploring the pathway to agroecological transition: Actors, practices and drivers and challenges
- 219 | HARRY QUAYE AMANKWAH | Adoption of agroecological practices in northern Ghana: Exploring motivations, challenges, and farmer profiles
- 228 | TESFAYE JORGI TEFERI | Intercropping for resilient and diversified agri-food systems in moisture-deficient areas of Ethiopia
- 66 | LEA PFENNIGER | Agroecological practices in an indigenous territory: Case study of an Aymaran community in Bolivia
- 884 | MICHAEL ELIAS MGALULA | Improving beekeeping using a landscape approach to maintain ecosystem health, agricultural yield, and promote agroecology
- 725 | SYLVIA SARAH NYAWIRA | Assessing the agroecological performance of smallholder households in Kiambu and Makueni counties in Kenya
- 936 | SARAH EDEWOR | Drivers of climate smart agriculture adoption in smallholder farming households in Nigeria
- 276 | LESLEY HOPE | Assessment of socioeconomic characteristics and adoption of sustainable land management practices in northern Ghana: The case of legume and cereal farmers
- 120 | ALEX ZIZINGA | Agroecological pathways for rainfed agricultural systems towards sustainable agroecosystems and land use productivity

3c. Biodiversity & neglected species

Room: Tent

Chair: VICKI MORRONE

- 301 | GETAHUN HASSEN ABBADICO | Transforming Ethiopian botanical gardens into socio-ecological systems for sustainable land use and climate resilience
- 822 | DWI SETYO AJI | Wild and alien plant species as a source of food and livelihood support among low-income households in semi-natural landscape of southern Java, Indonesia
- 576 | ALIOU FOUSSENI | Mangrove ecosystems determine fish diversity in southern Benin water bodies: Implications for fish biodiversity and aquatic ecosystems conservation
- 841 | RAJWINDER RIAR | Long-term sustainability of community seed banks in India
- 337 | MATTHIAS KLEINKE | Screening of baobab collection for rootstock selection
- 369 | ANDREAS MELCHER | Are freshwater stoneflies (Plecoptera) in dangered in West African Sahel region?
- 898 | DIEGO ALBERTO LOPEZ | Is the Acrocomia palm an option for degraded lands in smallholder' farms? A cost-benefit analysis
- 150 | MARTIN WIEHLE | Phenotypic and molecular analysis of sea-buckthorn accessions reveal promising genotypes and candidate genes associated with micronutrient content
- 676 | MARIE NOELA ENYOE OLOUGOU | Valorising neglected and underutilised crops: Role of bio-inoculants in improving productivity
- 165 | KOSSI HOUNKPATI | Assessment of the plant resource potential of different land uses within the restored forest landscapes in central Togo
- 704 | AXEL GUALDONI-BECERRA | Species diversity and biomass across land-use types in the fragmented Dry Chaco forest
- 710 | PETER SPRANG | Design of an evaluation framework to assess infrastructure investment for breeding operations
- 200 | SIEG SNAPP | Functional diversification through crops that nourish: 'More is better' evidence from around the globe
- 982 | BISMARCK OFOSU-BAMFO | Patterns and drivers of Liana community structure across five forest ecosystem types in Ghana

4c. Sustainable nutrition security

Room: Tent

Chair: GUDRUN B. KEDING

- 855 | IMELDA PARKER | Effectiveness of nutrition awareness campaigns on dietary diversity of caregivers and their children under five in southeast Liberia
- 926 | SAM BODJRENOU | Nutrition education and school garden improve children and adolescents' diets in urban and peri-urban areas of southern Benin
- 207 | THERESIA ASSENGA | Analysis of the past trends and the future food consumption in South Africa: A data-driven approach
- 393 | MARILYN ASIEDU SEFA | Understanding the impact of Ghana's food supply on food consumption trends, nutrition, and health outcomes
- 733 | ANSHUMAN DAS | Effect of sustainable integrated farming systems (SIFS) on dietary diversity of smallholder farmers in India
- 644 | ERICK AGURE | Horticultural diversity upon a home gardening intervention in rural Kenya: An exploratory cluster-analysis
- 244 | WILLY DESIRÉ EMERA | The symbolic importance of the banana economy for an improved livelihood for rural households, in Burundi
- 965 | SANATA TRAORÉ | Efficiency of common washing treatments in reducing microbial levels on lettuce in Mali

4d. Food quality & processing

Room: Tent

Chair: JAN BANOUT

- 533 | WATCHARAPONG NARABALLOBH | Use of conjugated linoleic acid (CLA) producing bacteria to develop sustainable goat milk product in Thailand
- 287 | TEMILOLA DADA | Influence of processing on physicochemical and antioxidant activity in tea and extracts of *Hibiscus sabdariffa* and *Rosa* powder vs. flower petals
- 816 | IRIS RAMAJ | Enhancing energy efficiency in medicinal and aromatic plants (MAPs) drying through optimised recirculation of exhaust air
- 64 | RHOWELL JR. TIOZON | Multi-omics deciphered the role of OsPPDK in reprogramming metabolism and enhancing resistant starch in whole grain rice
- 328 | MÉDÉRIC BEHANZIN | Impact of temperature on level and functionality of miraculin in Beninese sistrè berries (*Synsepalum dulcificum*)
- 602 | RACHEL BYARUGABA | Effect of information on sensory and emotional profiling of processed leaf amaranth (*Amaranthus* spp.) products
- 141 | JOSEPH KUDADAM KORESE | Valorisation of shea (*Vitellaria paradoxa*) fruit by-products: Processing, characterisation and potential applications in bread development
- 454 | PAMELA A. MARINDA | Sustainable indigenous mursik fermentation for healthy diets and planetary health
- 124 | BARBORA MOTÝLOVÁ | Enhancement of vitamin D2 content in *Lentinula edodes* through solar drying and ultraviolet irradiation
- 142 | JOSEPH KUDADAM KORESE | Convective drying dynamics of onion flower stalks: Quality retention and powder property enhancement

5c. Social learning and network

Room: Tent

Chair: CORY WHITNEY

- 423 | EMIL BEGIMKULOV | Do SME food processors with certification perform better than those without? A case study from Kyrgyzstan
- 766 | LA THI THAM | Factors affecting members' satisfaction with their agricultural cooperatives: Insights from small-scale farmers in Nam Dinh province, northern Vietnam
- 856 | SHU-WEI CHOW | Fostering agroecological transition in Rwanda through farmer-centred social learning and knowledge co-creation
- 913 | USMAN ABDULLAHI ANGARA | How effective is your demo plot? Feedback from a new "participatory demo plot appraisal toolkit"
- 503 | THOMAS FALK | Facilitating food system innovation through inclusive co-creation: An assessment from Caquetá, Colombia
- 368 | PAUL SCHULZE | Will the tide turn? examining social inclusivity and equity in scaling dynamics of an indigenous-based eco-engineering approach to flood and sediment management in coastal Bangladesh
- 462 | NELL DANA RICHTER | Mindsets shaping landscapes? Social values and land use attitudes across countries in the southwestern Amazon
- 400 | VALENTINE COPT | A systematic analysis of factors shaping youth participation in agriculture in northern Laos
- 498 | MICHEL KABIRIGI | Farmer mental models and fertiliser use decisions: Insights from five districts in Madagascar

FRIDAY 12.09.2025

6b. Development economics

Room: Tent

Chair: DOMINIK SURI

- 459 | BE THANH DUONG | Are poverty-targeting tools practicable? Results from a mixed-methods study of ethnic groups in southern Vietnam
- 805 | MARKUS RAUCHECKER | Bush biomass value chains in Namibia – A transformation in the making?
- 724 | DAVID PUERTA | Sustainability standards for novel macauba value chains in Brazil for energy transition: a framework proposal
- 728 | MELANIE CONNOR | Grain quality, pricing, and rice millers' preferences for improved agricultural development in Tanzania
- 875 | AICHA MECHRI | Identifying and addressing sustainability hotspots in fruit and vegetable value chains: A participatory assessment from the Niayes area in Senegal
- 46 | INGRID FROMM | EUDR compliance in Ghana's natural rubber sector and its implications for smallholders
- 950 | SIMON GICHEHA | Economic cost and benefit of integrating horticulture with staples among smallholder women farmers in Kenya
- 695 | JOCHEN DÜRR | Sustainable innovations in bioeconomic value chains: The case of Argentina

Online 1b/1c. Crop (a)biotic stress

Streaming in room: Hörsaal 1

- 768 | MICHAEL EULER | Is stress-tolerant maize a pro-poor technology?
- 299 | CHAU TRAN THI HA | Heat stress response and genome-wide association mapping in global leaf mustard (*Brassica juncea*) accessions
- 839 | MATHEW MUMO | Performance of amaranth (*Amaranthus dubius*) and African nightshade (*Solanum* spp.) under varying shade net levels in Kilifi County, Kenya
- 876 | BENJAMIN ARMANDO | Characterisation of salt-affected rice soils across a coastal gradient in the Zambezi river delta, Mozambique
- 135 | AUNG ZAW Oo | Impact of abiotic stress on grain yield, antioxidant activity, and nutritional quality of black rice
- 864 | DENIS WAISWA | Adopt or dis-adopt push-pull technology? Insights from discrete-time proportional hazard models and machine learning-based survival analysis in East Africa
- 672 | OSCAR MURIITHI | Morphological responses of selected African nightshade lines to salt stress
- 716 | ANDO LALAINA RAZAFINDRAZAKA | Assessment of seedling early vigour in lowland rice under different thermal environment
- 493 | KOSSI Adjah | Stage-specific drought responses in rice: Shoot transcriptomes uncover tolerance genes and contrasting vulnerabilities to inform African breeding programs
- 419 | EWALA MBARGA WINNIE LEITICIA CRESCENCE | Effect of the use of *Tithonia diversifolia* on the growth parameters of groundnut (*Arachis hypogaea* L.) and the nutritional and health quality of its grains
- 122 | HAYDER ABDELGADER | Performance of *Trichogramma* spp. on *Spodoptera frugiperda* (J.E. Smith) (Lepidoptera: Noctuidae) eggs at laboratory

Online 2c. Amendments and nutrient management

Streaming in room: Hörsaal 3/4

- 645 | HAMMOND ABEKA | Effect of different combinations of granular and briquette fertilisers on maize yield in northern Ghana
- 273 | CONSOLATA MUINDI | Comparative effect of sunn hemp with farmyard manure and inorganic fertiliser levels on selected soil properties, growth, yield and quality of cotton in titanium-mined reconstituted soils in Kwale county, Kenya
- 229 | BARBARA K. ARTHUR | Using wood vinegar to promote sustainable cowpea production in northern Ghana
- 421 | SHOVA SHRESTHA | Farmyard manure enhance phosphorus stocks in maize-based mix farming system in Himalayas range
- 494 | NURUDEEN ABDUL RAHMAN | NPK fertiliser type and time of application effect on growth, yield and profitability of maize production
- 535 | FELIX MATHERI | Soil productivity management strategies in the sub-humid agro-ecozones: Vermiculture tea as a potential option
- 574 | PHANUMAT AINTA | Evaluation of *Streptomyces sampsonii* (MFA02) from mealworm frass as a biofertiliser for chinese kale
- 36 | M. ABDULAH-AL BAQUY | Effectiveness of co-composted biochar on soil acidity and maize growth in acidic soil of Bangladesh
- 184 | KOCOU FORTUNÉ ADOKO | Development of a pilot kiln and biochar characterisation for agriculture and carbon sequestration in Benin
- 246 | NAFIU ABDU | Carbon mineralisation kinetics and greenhouse gas emission as influenced by biochar and poultry manure
- 634 | KWAME AGYEI FRIMPONG | Integrated soil fertility management with biochar cocompost and inorganic fertiliser has potential to increase soil quality: Nitrogen use efficiency and maize yields in Africa
- 256 | TERESIA WAMWONDWE | Economic viability perceptions for adoption of black soldier fly farming in climate-smart organic waste management
- 5 | TOLULOPE JERUMEH | Effect of integrated nutrient management on household resilience in Nigeria
- 967 | JOHN BRIGHT AMOAH NYASPOH | Oil palm empty fruit bunch and its biochar combined with irrigation on a tropical Acrisol increase African eggplant productivity

Online 3b. Agroforestry

Streaming in room: Hörsaal 5/6

- 31 | ANNE BOUWMEESTER | Agroforestry in the Algarve region, Portugal: Overview and farmers' perceptions
- 529 | ISSOGNIMA ROMARIC YOLOU | Traditional agroforestry systems and adaptation to climate change in the Okpara district, Benin
- 557 | HANADI MOHAMED SHAWGI GAMAL | Reconciling community needs with forest health: Impact on vegetation cover in Noura Natural Forest, Sudan
- 563 | FATIMA ALI | Future scenarios of Okalima forest values and uses
- 129 | DORINE ODHIAMBO | Urban and peri-urban agroforestry for climate change adaptation and ecosystem services provision in Kiambu, Kenya
- 309 | ANGGA EKO EMZAR | Smallholder oil palm transitions to responsible sourcing production: Sustainable practices, adoption barriers, and socioeconomic outcomes
- 673 | ANDREAS REISCH | Shade tree leaf phenology in cocoa agroforestry management: Insights into soil-foliar nutrient dynamics

938 | ABENAN N'GUETTIA LÉONTINE ADAHÉ | Structural diversity of rubber and cocoa systems in Côte d'Ivoire

Online 5a/5b/6c. Social learning, governance and science policy

Streaming in room: Hörsaal 7

- 288 | RAJESH S. KUMAR | Policy innovations through agroforestry transitions in Bundelkhand, India: A systems approach to land restoration and planetary health
- 467 | THEOPHILUS DELALI DUMENYO | Making the case for crop-livestock integration: Financial, technical, and policy insights from Kumbungu, Ghana's savannah
- 45 | MOJTABA NIKZAD | Integrating monetary policy and sustainable land use: A longitudinal analysis of Iran's agricultural sector dynamics
- 525 | DIANA MARÍA GUTIÉRREZ ZAPATA | Hotspots for integrated solutions in Kenya
- 532 | SILVIA KIMATHI | Women's empowerment in agriculture: Pro-WEAI analysis of small-scale potato farmers in Narok County, Kenya
- 197 | MATEO PAZOS | Gender differences and preferences in improved forage seeds demo farms experience amongst livestock farmers in Kenya and Uganda
- 59 | GIRMA LAGISO | Empowering communities: The key to sustainable forest and wildlife management in Ethiopia
- 264 | MARY OJOBE | Trading inequality: Gender-based differences in market returns for male and female staple crop farmers in Nigeria
- 41 | ALCIDO ELENOR WANDER | Governance structures of tomato purchases in Goiás, Brazil: A multi-season study on hybrid arrangements
- 872 | MARGARET LUKUYU | Gender issues in scaling of climate-smart forages in small-holder farms in Kenya and Uganda
- 972 | ALEXANDRA RASOAMANANA | Winners, losers, and the implications of inequality in biodiversity conservation policies: Insights from European development aid to Central Africa
- 907 | SADEGH RAHMANI | Dynamics of change in Iran's agricultural water governance: Institutional barriers and leverage points for transformative adaptation governance
- 780 | HOUMAN LIAGHATI | Governance system analysis: A conceptual approach to saving lake Urmia, Iran
- 828 | KHADIJEH SOLEIMANI | Cultivating minds: how social media transforms Iranian Farmers' learning landscapes through engaging science communication
-

Plenary session Friday 12.09.2025 | 10:30 – 11:30

10:00 – 10:30

*Coffee break**Tent*

10:30 – 11:30

Keynote speeches | Hörsaal 2

Moderation: CHRISTIAN BORGEMEISTER, University of Bonn

OUSMANE BADIANE

Executive Chairperson, AKADEMIYA2063



Dr. Ousmane Badiane, a Distinguished Fellow of the African Association of Agricultural Economists, recipient of the Africa Food Prize in 2015, and a member of the World Academy of Sciences, serves as the Executive Chairperson of AKADEMIYA2063. He has over 30 years of experience as an academic and a practitioner in international development.

As the Director for Africa at the International Food Policy Research Institute (IFPRI), he was instrumental in developing and guiding the implementation of the Comprehensive Africa Agriculture Development Programme (CAADP).

As Lead Specialist for Food and Agricultural Policy at the World Bank, he served as advisor to the Vice President for Africa and originated projects with large-scale funding. Between research and development finance, Dr. Badiane taught Economics of Development in Africa at Johns Hopkins University's School of Advanced International Studies for many years.

Dr. Badiane received a PhD in Agricultural Economics from the University of Kiel in Germany. He is also the recipient of a Doctorate Honoris Causa from the University of KwaZulu-Natal.

FRIDAY 12.09.2025

**BERNARD VANLAUWE**

Deputy Director General for Research for Development of the International Institute of Tropical Agriculture (IITA), Kenya

While leading the development and implementation of the research portfolio at IITA, his own research focuses on the development and scaling of Integrated Soil Fertility Management options for smallholder farmers in key farming systems of sub-Saharan Africa. He recently lead the establishment of the Regional Hub for Fertilizer and Soil Health for West Africa and the Sahel, a key component of the Lome Roadmap for Fertilizer and Soil Health, adopted by West African Heads of State in 2023. He has published over 250 papers in peer-reviewed journals and (co-) supervised over 40 PhD students.

11:30-12:00	Conference review, JOACHIM VON BRAUN
12:00-12:10	Photo competition - best photo / best photo series
12:10-12:20	Conference review by the student reporters
12:20-12:30	Poster Awards

12:30 – 13:00 Closing ceremony

Closing remarks and handing over to the University of Göttingen, Germany

Moderation: MATHIAS BECKER, University of Bonn

End of Tropentag 2025

Thank you very much for your attendance and see you next year at TT26 in Göttingen

