



WORK ORGANISATION AND THE ROLE OF WOMEN IN AMAZONIAN FARM TRAJECTORIES

Andrés Vega-Martinez¹, Nathalie Cialdella¹, Andrieu Nadine²

¹ CIRAD Center for International Cooperation in Agricultural Research for Development, UMR INNOVATION, France.

² CIRAD Center for International Cooperation in Agricultural Research for Development, UMR INNOVATION, Guadeloupe.

SCIENTIFIC BACKGROUND

- Amazonian Agriculture is becoming more organizationally complex by confronting issues on generational and urban transitions, and on forest preservation.
- Technical solutions to conciliate agriculture and forest faces low adoption.
- Agronomic studies rarely involve work organisation and even less women work.

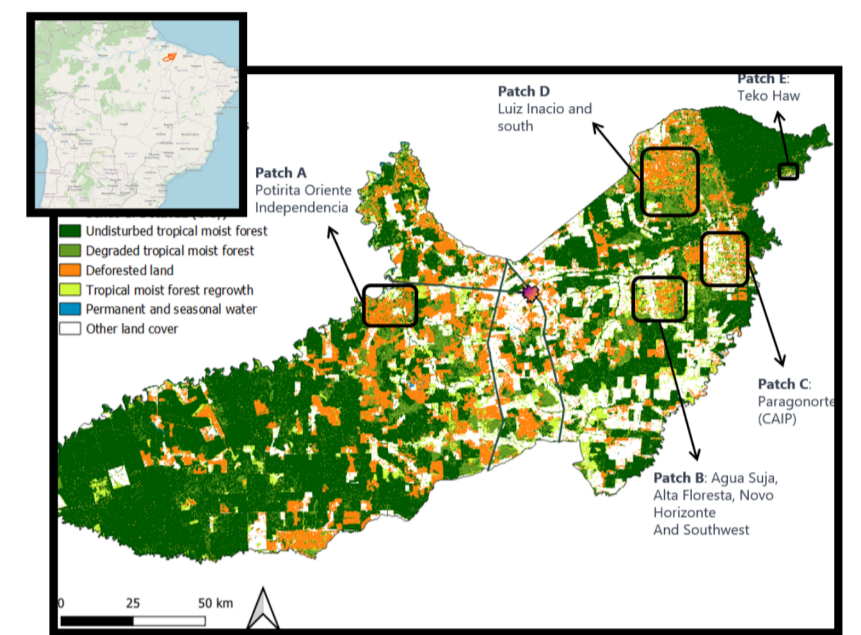
Hypotesis Highlighting the allocation of workgroups and the women's contribution helps to understand agricultural dynamics and the room for change.

MATERIALS, METHODS AND DATA ANALYSIS

- Study zones selected in each territory (Paragominas, Brazil and Guaviare, Colombia) according to environmental challenges visions of local key informants and forest regeneration, degradation and deforestation layers.
- Women and men Farmers were interviewed with the aim of analyzing the role of women and work organization in farm trajectories and analyzed through a compressive analysis of family and farm history.



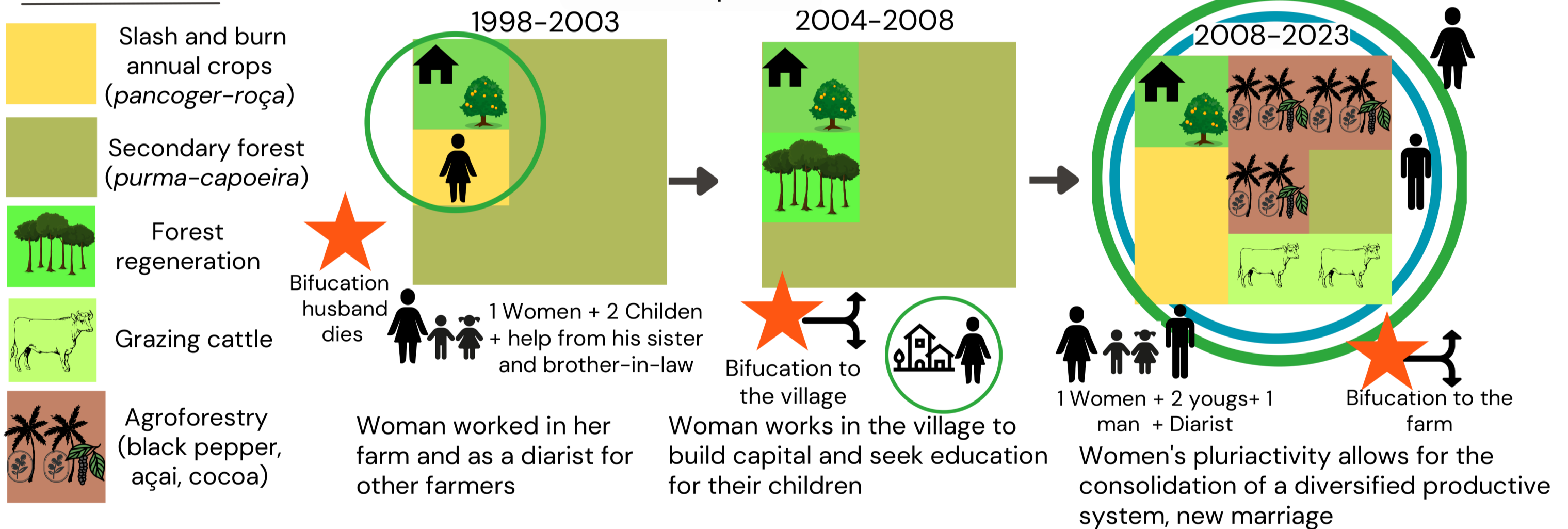
woman farmer making manioc flour



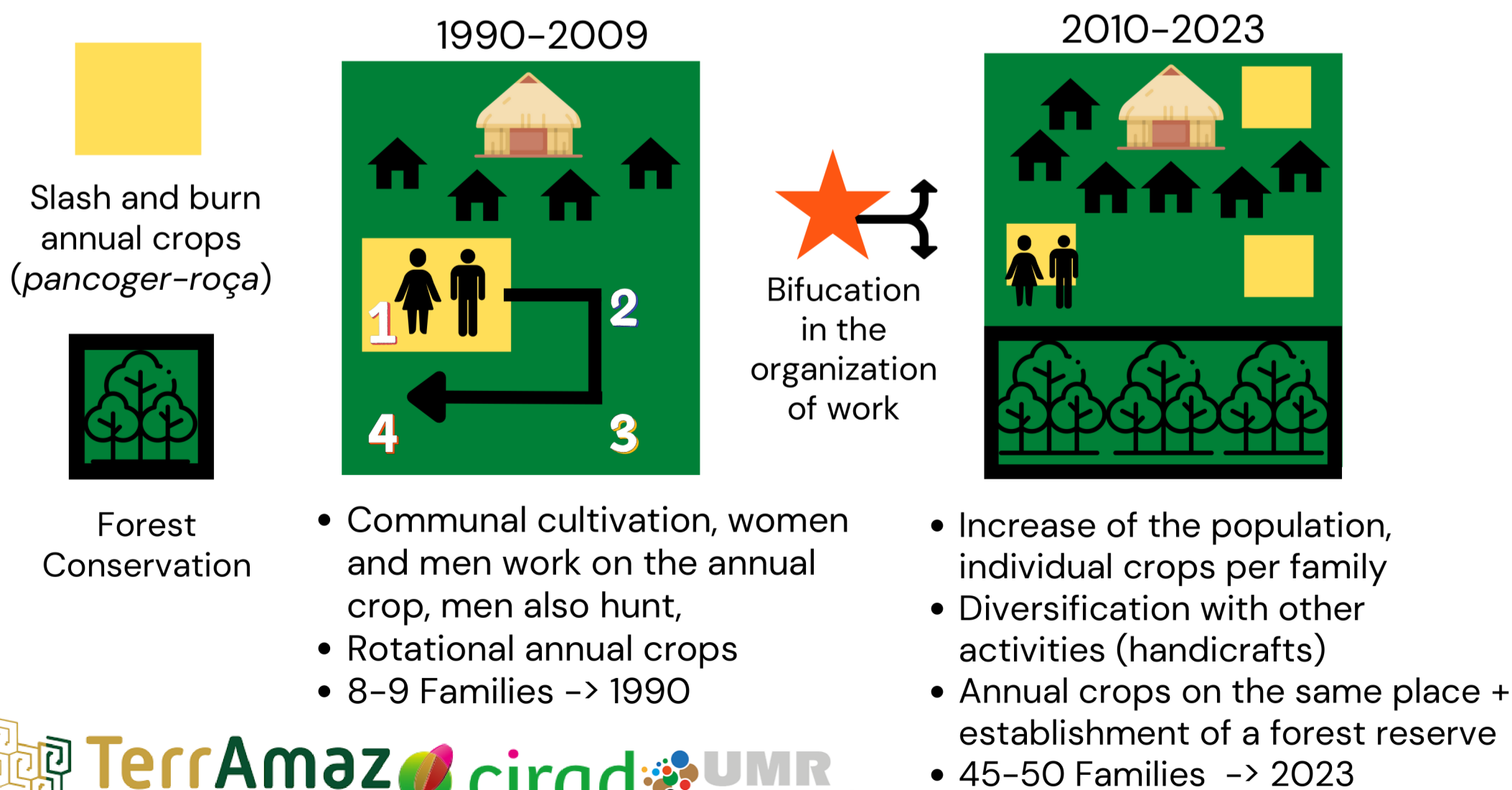
Paragominas Selected patches Generated with Qgis Types of Production, TMT JRC 2022 Open Street Map

PRELIMINARY RESULTS

Trajectory A small working groups in a context of land occupation



Trajectory B Large working group in a context of forest conservation



CONCLUSIONS

- Women are active in the work group, but in the Amazonian context cannot work alone, without a "husband" or male companion.
- Women play a major role in the establishment of production systems but this does not systematically result in preservation.

