

PlaSA Colombia: A data-based systemic approach for transforming food systems



PlaSA Colombia

Johana Castillo ¹, Sara Rankin ¹, Carlos González ¹

¹Alliance of Bioversity International and CIAT

INTRODUCTION

Food systems in Colombia, as well as worldwide, face multiple challenges: climate change, malnutrition, obesity, food loss and waste, among others. Although there is a wealth of data on fundamental aspects of these systems -production, distribution, consumption, and the nutritional status of the population-, the lack of integration and accessibility to this information limits its usefulness for decision-making. PlaSA Colombia, a platform developed by the Alliance of Bioversity International and CIAT, seeks to overcome these challenges through a **systemic approach** that, by utilizing public data, integrates and simplifies scattered information, facilitating public access and promoting informed decision-making.

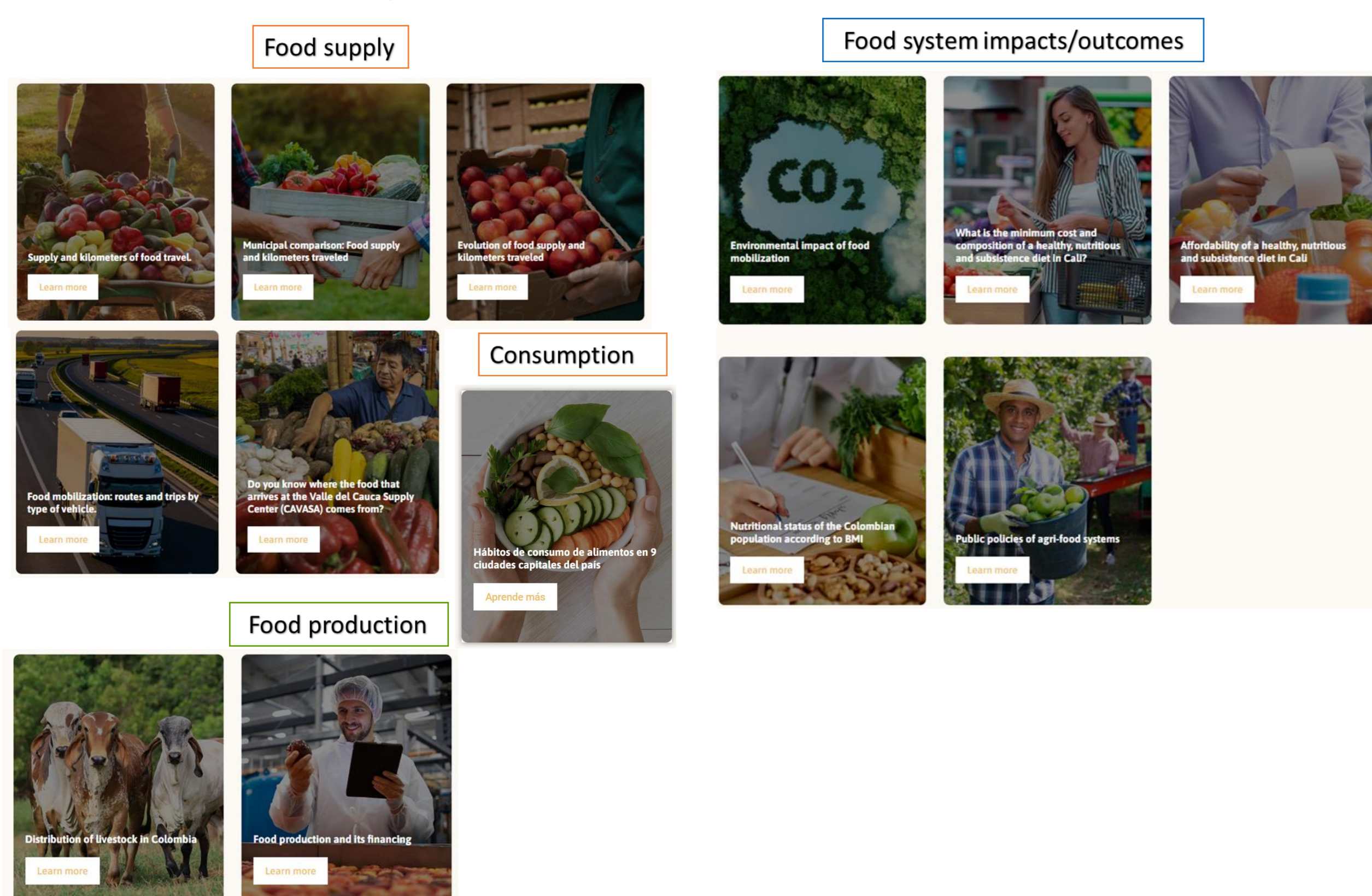


RESULTS

Data Integration and Public Access: PlaSA Colombia centralizes millions of scattered data points about food systems, **making it easier to understand their complexity** and enabling the **integration of different data to analyze**, for example, supply, its environmental impact, the costs of different diets, and who can access them.

Impact on Sustainability: Since its launch in April 2023, PlaSA has been accessed by **2,300 users**, including students, universities, media, development agencies, public officials, and NGOs. It has been used to provide a comprehensive view of food systems and generate knowledge products that influence the public agenda, such as theses, reports, case studies, blogs, and news articles.

Community of Practice (CoP): PlaSA has created a meeting space among universities, wholesale markets, policymakers, and NGOs working on food-related issues from various fronts. The CoP comprises 52 members from 19 organizations across different cities, collaborating actively.



OBJECTIVES

PlaSA Colombia aims to make all existing data on food systems available to everyone, as well as to transform decision-making around food systems by integrating fragmented data into an accessible and comprehensible platform.

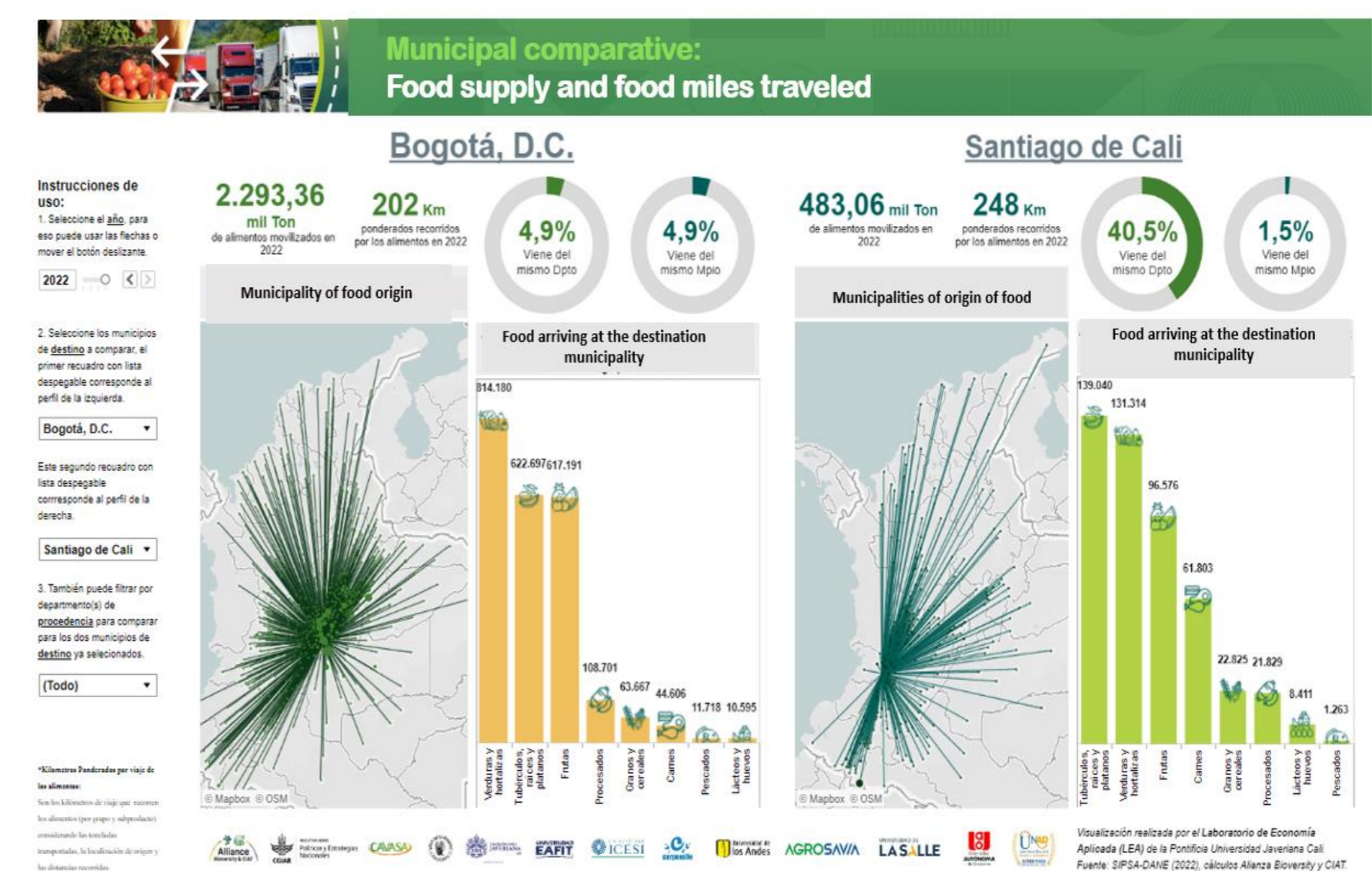


Figure 1. PlaSA Colombia. Source: <https://plasacolombia.com/sistema-alimentario/>

METHOD AND USE

The platform uses a systemic approach to organize and analyze data from multiple dimensions, including food production, distribution, and consumption, as well as the policies that affect them and their socio-economic and environmental impacts. This tool focuses on:

1. **Data Integration** from different sources to create a cohesive database.
2. **Transform** data into understandable and easy-to-interpret elements.
3. **Simplifying** complexity for decision-makers
4. **Integrate** the different authors that generate disjointed information and actions

CONCLUSIONS

PlaSA Colombia simplifies the understanding of food systems by transforming complex data into clear and accessible information. This, in turn, facilitates decision-making for policymakers and other key stakeholders. The platform unifies scattered information from different sources, creating a coherent and coordinated vision. Additionally, it identifies inadequacies within the food system, allowing for more effective planning and management. PlaSA also establishes clear narratives that help interpret fundamental aspects, informs about actions and progress to promote transparency, and enables the anticipation and management of food and climate crises with up-to-date and relevant data.

FURTHER READING

Rankin, S., Castillo, J., González, C. (2023). PlaSA Colombia, una herramienta para transformar los sistemas alimentarios del país. [Manuscript in preparation]. CIAT.

www.plasacolombia.com

<https://cgspace.cgiar.org/items/3b3f0baf-d7e4-4221-a270-a4be1072a0c9>

ACKNOWLEDGMENTS

This project has been made possible thanks to the collaboration of the Alliance of Bioversity International, CIAT, and multiple academic and institutional partners. We especially thank the universities and collaborating entities that have contributed their expertise and data for the development and success of PlaSA Colombia.