

Development of a multi-criteria-based decision support tool for circular resource recovery and reuse business models

Tosin Somorin*, Solomie Gebrezgabher, Avinandan Taron, Surajidt Ghosh, Shweta Yadav, Eric Narthey, Susanne Bodach
International Water Management Institute
*Contact: t.somorin@cgiar.org

The Challenge ▶▶

- **Circular Economy (CE)** models provide multiple routes to Resource Recovery and Reuse (RRR).
- Decision makers recognize the potential of CE but have difficulty choosing business models due to **complex trade-offs and uncertainties**.
- A holistic assessment and systematic tool that considers **multi-objectives and perspectives** are needed for **informed decisions**.

Objectives ▶▶

Develop a multi-criteria decision support tool for:

- A rapid assessment of suitable locations for CE/RRR business models in a given context.
- A quick narrowing of CE/RRR business models for a given waste stream and technology options, while considering the priorities and interests of various stakeholders.
- A user-friendly interface to modify inputs and test scenarios and an interactive data visualization dashboard for result analysis.

Methodology ▶▶

- A multi-criteria decision analysis (MCDA) method that explicitly considers the priorities of various decision-makers.

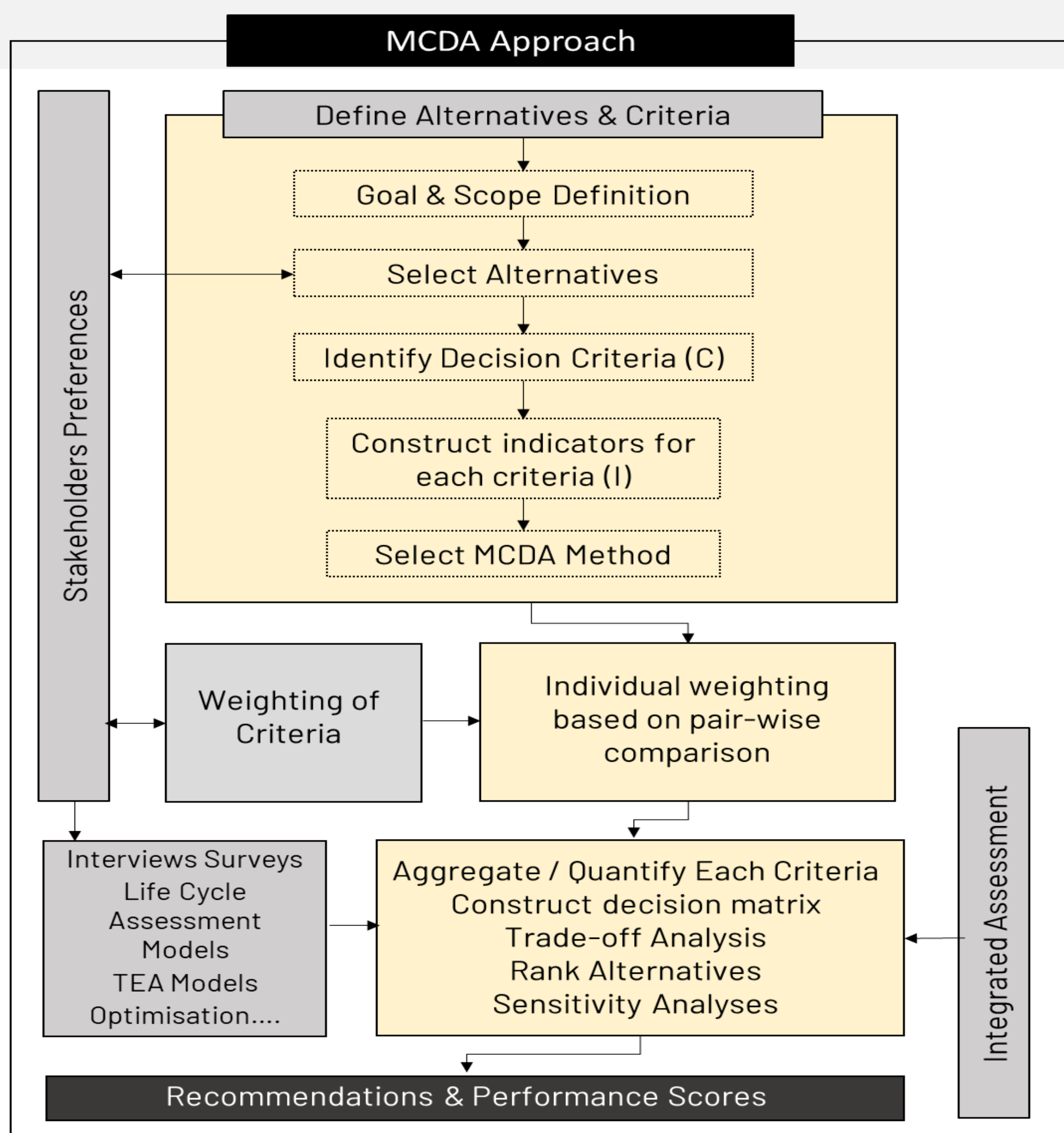
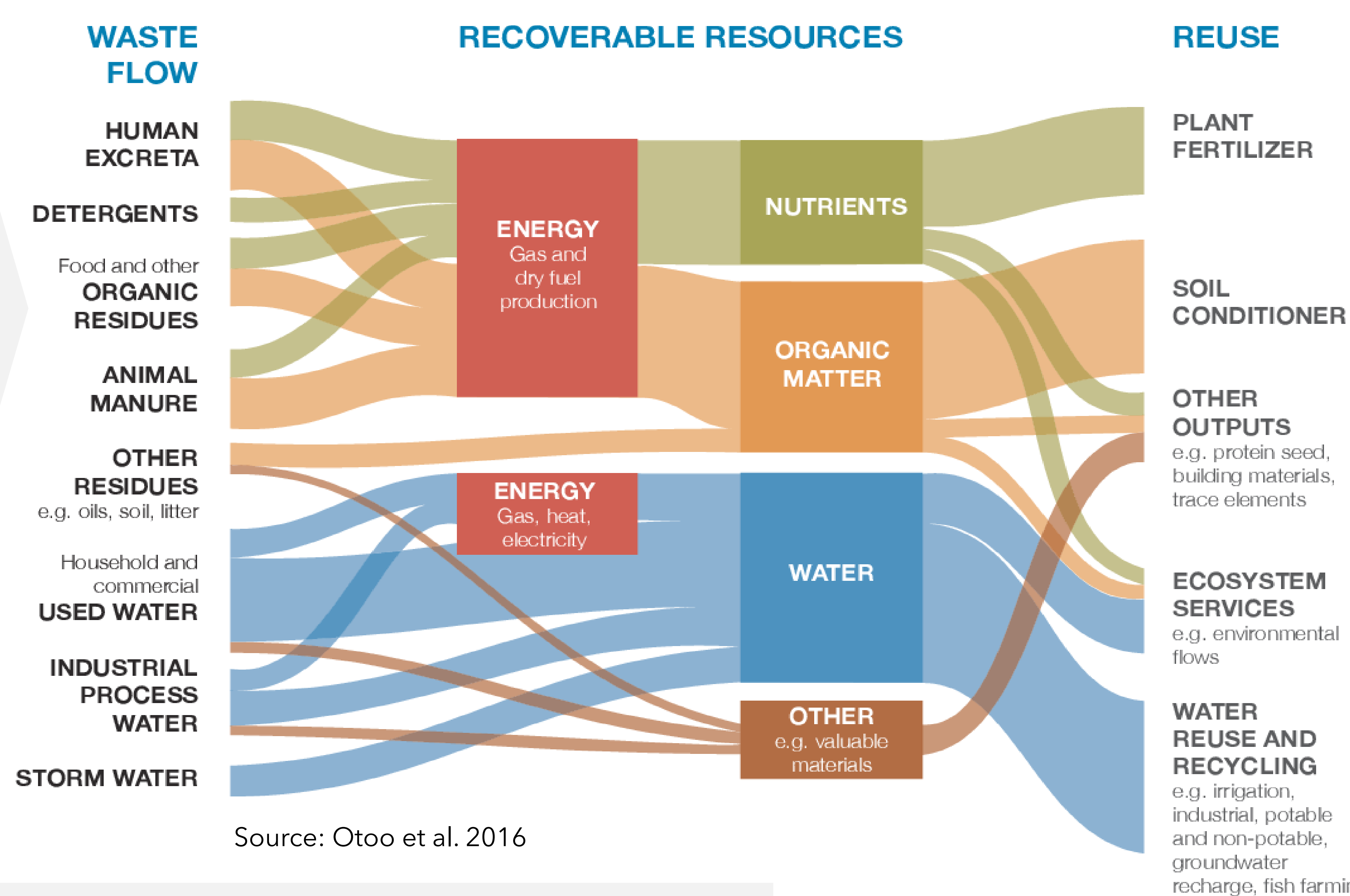


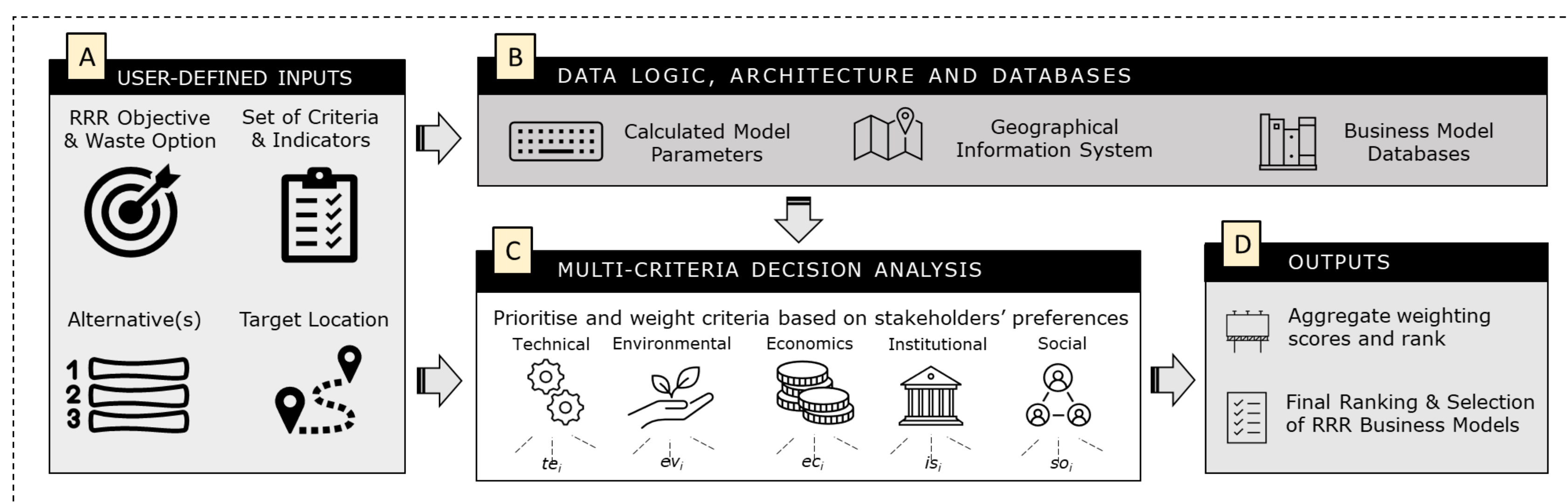
Figure 1: A typical workflow of MCDA



Source: Otoo et al. 2016

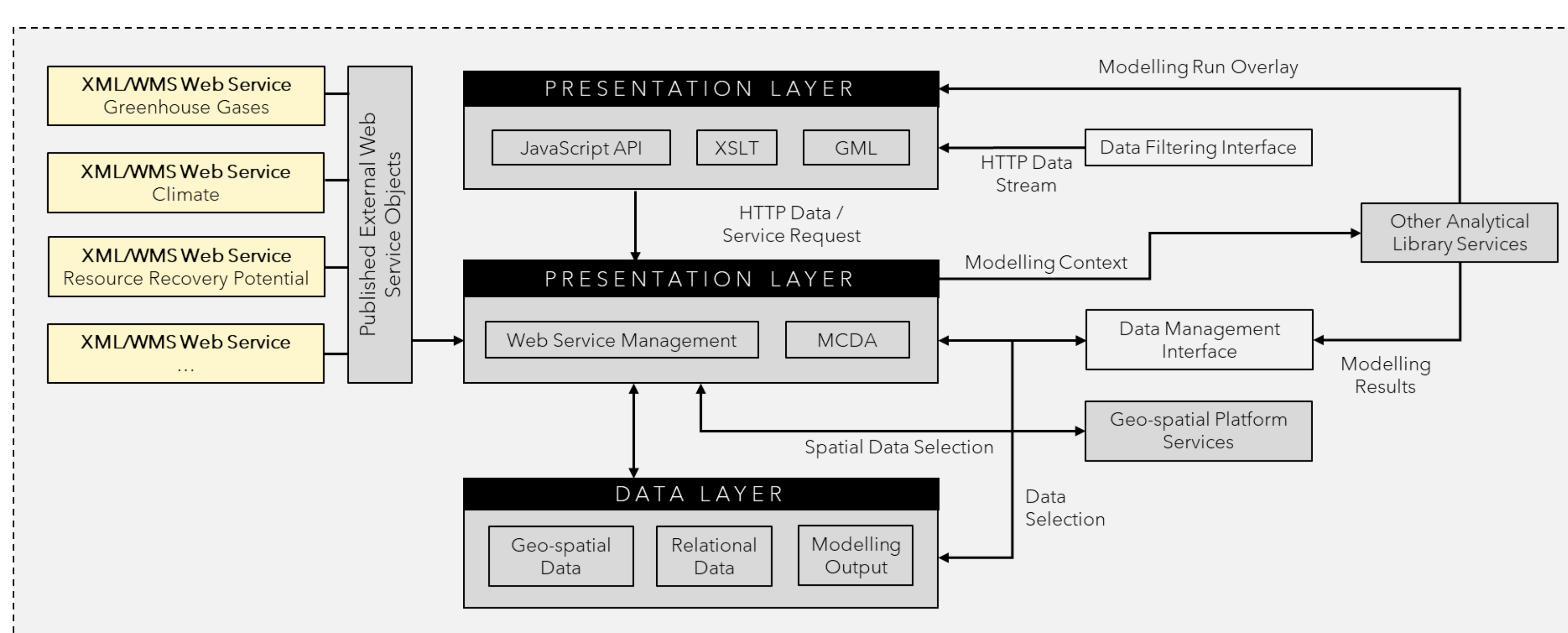
Conceptual Framework ▶▶

Figure 2: Conceptual framework of the multi-criteria decision support tool



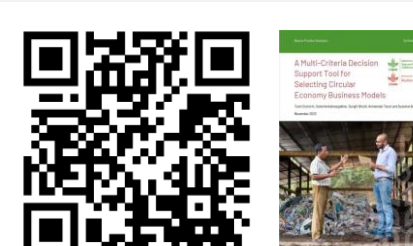
Tool Architecture ▶▶

Figure 3: Software architecture of multi-criteria decision support tool



Preliminary Outcomes ▶▶

Read More Here ▶▶



Social Group	Criteria			
	Technical	Environmental	Economic	Social
Research	0.20	0.20	0.30	0.30
Private	0.30	0.20	0.40	0.10
Development partners	0.20	0.30	0.30	0.20
Government	0.25	0.25	0.25	0.25
CSO	0.20	0.25	0.30	0.25

- Different stakeholders and interest groups have varying priorities for economic, social, and environmental objectives.
- Target tool users include Business Incubators, Metropolitan, Municipal And District Assemblies (MMDAs), Environmental Service Provider Associations, Waste Management Organizations and Planning Departments.

Acknowledgement: This work was carried out under the CGIAR Initiative on Nature-Positive-Solutions and Resilient Cities. We would like to thank all funders who support this research through their contributions to the CGIAR Trust Fund (www.cgiar.org/funders).