



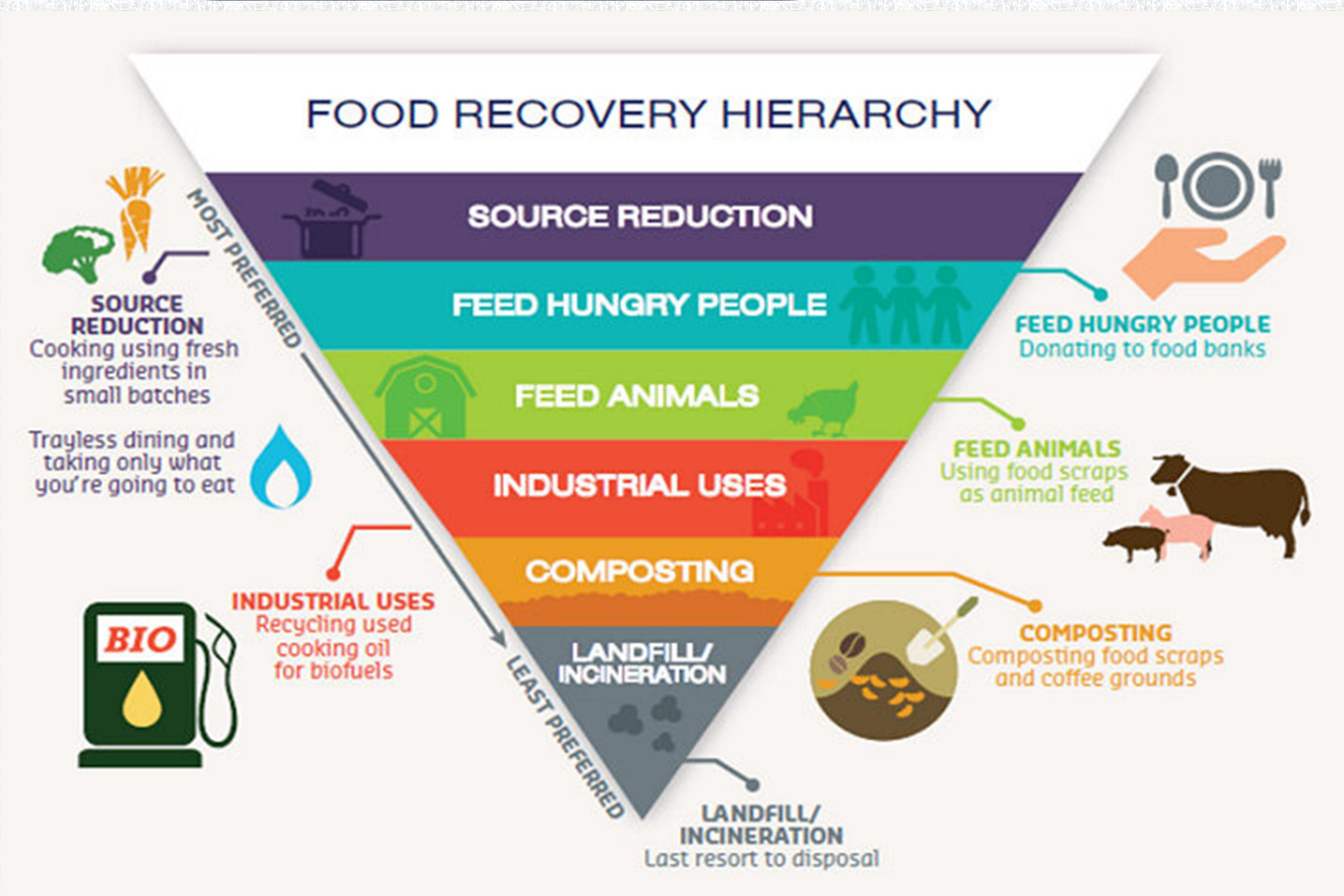
- ✓ FLW reduction increases income.
- ✓ FLW ensures sustainable Livelihood.
- ✓ FLW ensures environmental sustainability.
- ✓ Stakeholders should invest in technologies that promote
  - Packaging
  - Storage

To explore the impact of food loss and waste on food security, the livelihood of farmers, and environmental sustainability in Ghana.

- ✓ Secondary Data
  - ✓ Systematic Review
  - P - preferred
  - R- Reporting
  - I- Items for
  - S- Systematic Review
  - M-Meta
  - A- Analysis
- (Caulley et al., 2020),

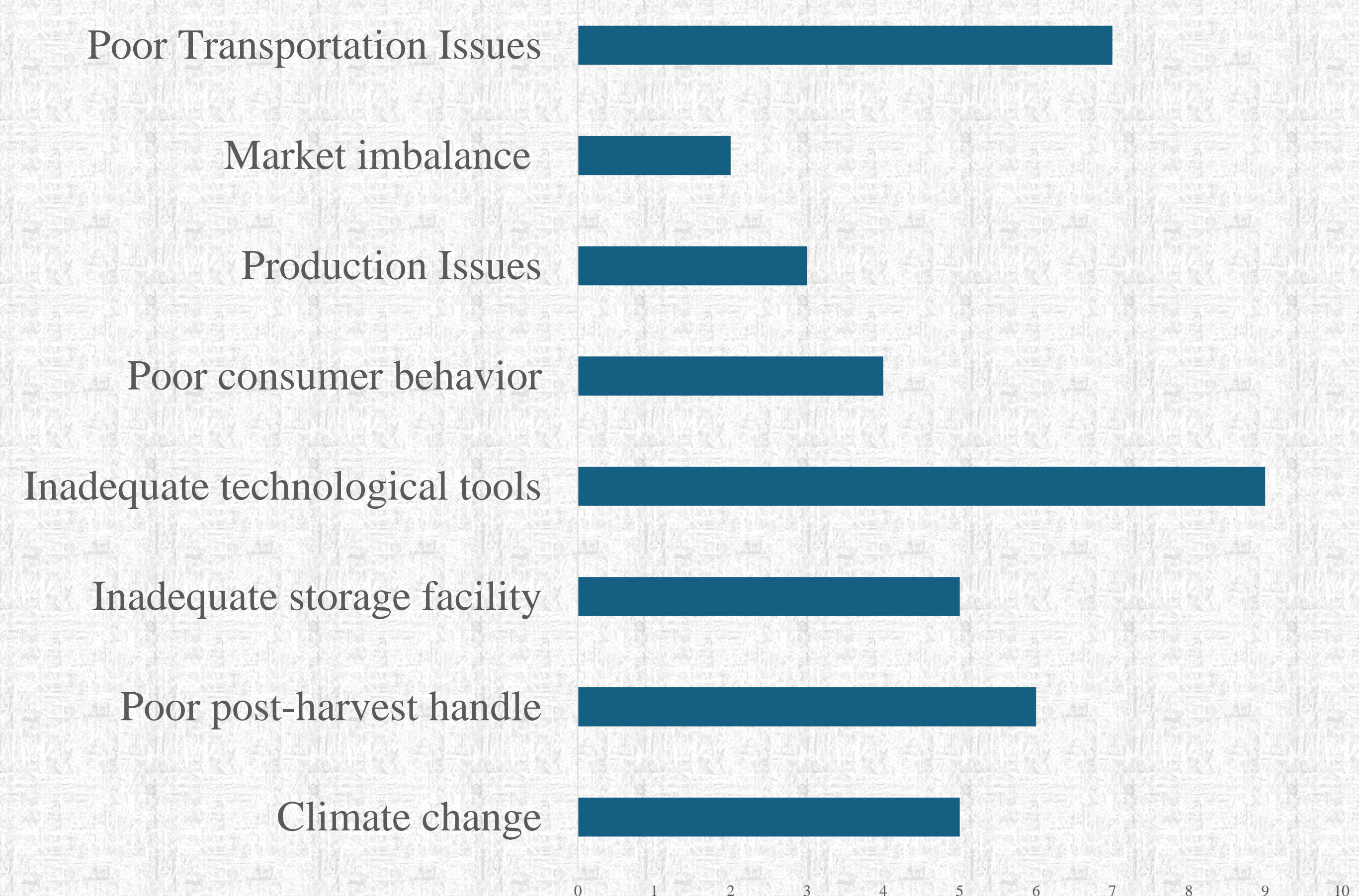
- 
- The infographic is divided into four horizontal sections, each with an icon on the left and a text label on the right. The background is a light gray with a faint, repeating pattern of wheat stalks.
- Inefficient harvesting methods:** The icon shows a person in a conical hat using a sickle to harvest wheat. The text "Inefficient harvesting methods" is to the right.
  - Poor Consumer Behavior:** The icon shows a person carrying a basket, standing next to a shelf with stacks of bread and bowls of food. The text "Poor Consumer Behavior" is to the right.
  - Inadequate processing techniques:** The icon shows a yellow background with a black silhouette of a manual processing machine. The text "Inadequate processing techniques" is to the right.
  - Poor Storage facilities:** The icon shows a brown barn with a white lattice door. The text "Poor Storage facilities" is to the right.
- At the bottom of the infographic, the text "Poor post-harvest handling" is written in a large, black, serif font.

## Reduction of Food Loss and Waste



Source: Niedek & Krajewski, 2021

## Causes of FLW



Presenter: Miss Dorcas Twumwaa Gyan

Dorcas Twumwaa Gyan<sup>1\*</sup>, Jones Abrefa Danquah<sup>4</sup>, Faustina Appiaa Gyan<sup>2</sup>, Esi Dadzie<sup>1</sup>, Daniel Aniewu<sup>1</sup>, Jeff Dacosta Osei<sup>1</sup> Sheena Dorcoo<sup>3</sup>,  
<sup>1</sup>Southern University and A&M College, Department of Urban Forestry, Environment and Natural Resources, Baton Rouge, LA 70813, USA

<sup>1</sup>Southern University and A&M College, Department of Urban Forestry, Environment and Natural Resources, Baton Rouge, LA 70813, USA

<sup>2</sup>Department of Business and Social Science Education, University of Cape Coast, Ghana.

Center for Climate Change and Sustainability Studies, University of Ghana, Legon-Ghana.

<sup>4</sup> Department of Geography and Regional Planning, University of Cape Coast, Ghana.

