



Is associativity the key? Unraveling power dynamics in rural trading using an 'intertwining approach'

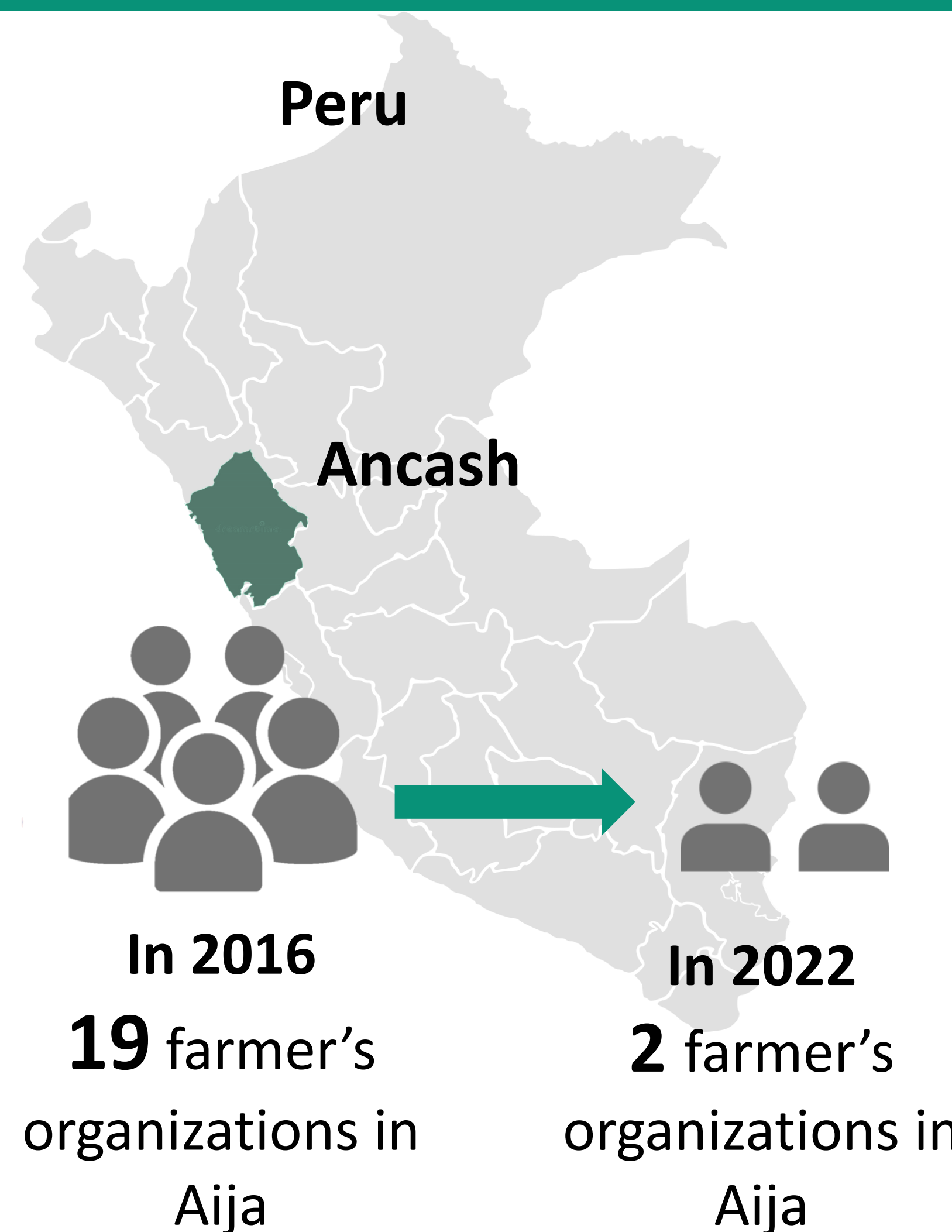
Marco De la Cruz¹, Diana Santos², Joost Dessein¹

¹ INSPIRA Department of Agricultural Economics, Ghent University

² NGO Eclósio Andes, SAMA Project

Introduction

- Farmer-to-farmer relationships expect to transform food systems by tackling imbalances in commercial behaviors among small scaled farmer markets.
- Process holds critical assumptions (e.g., trade and work conditions, resource sharing habits) that often scape radar of project implementers and are entangled in complex power dynamics.
- The paper explores those dynamics in the Aija province in Ancash, Peru by advancing our 'intertwining approach' rooted in institutional theories.



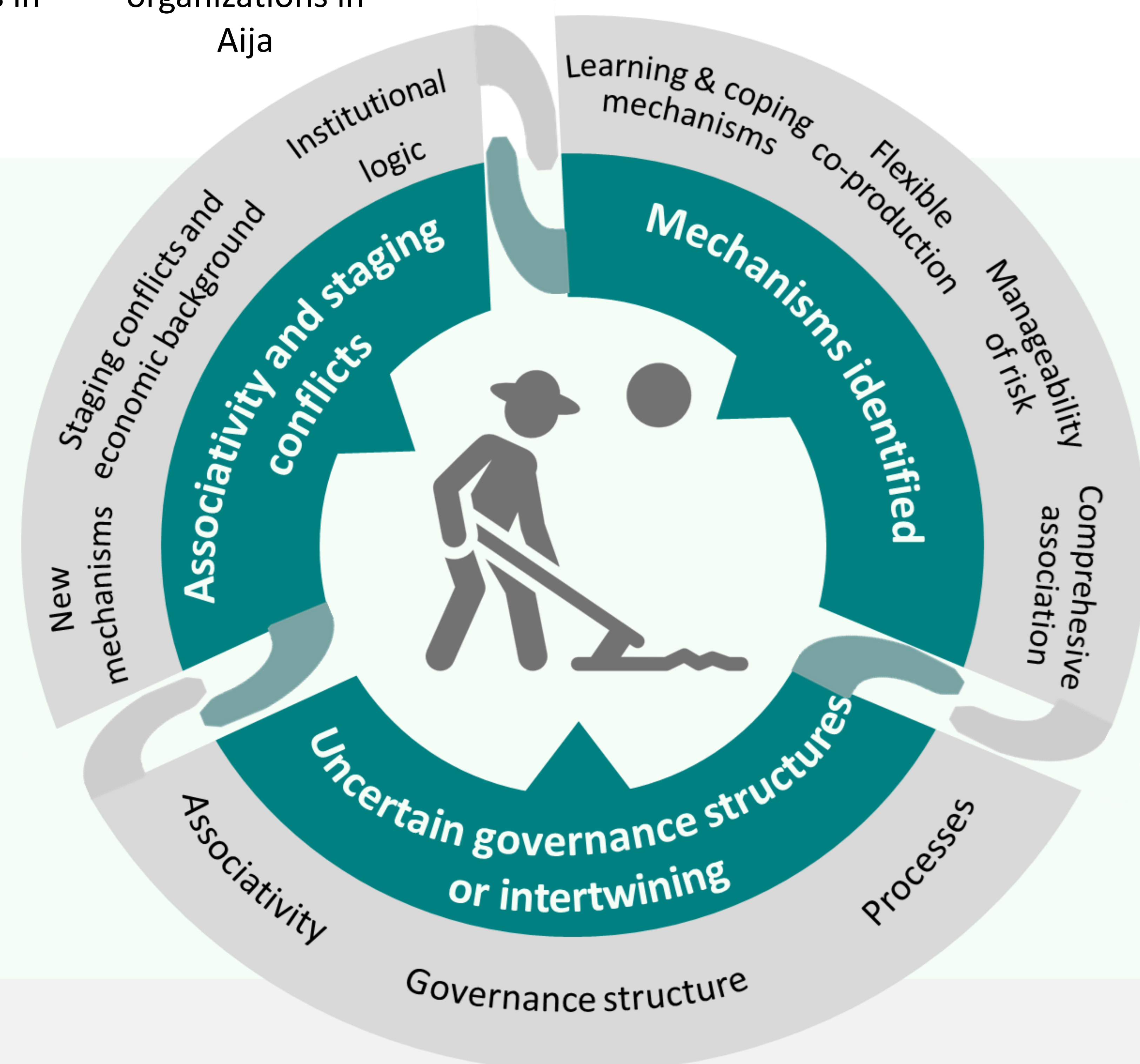
Methods

Case-study approach with in-depth interviews with 15 farmers and periodic and spontaneous extended dialogues with participants at various events.

Data triangulation, extensive documentation, reconstructed institutional logics, actors' discourses and practices
Inductive analysis through the lenses Intertwining approach.

Results and discussion

- Associativity has essentially an adaptive approach derived from the complexity and resilience thinking in which - family or self -organization have a central role.
- Farmers introduced new mechanisms to cope with challenges of introducing products into local markets (traditional). These mechanisms have several shapes and degrees of complexity depending on prevalent and shared institutional logics.
- Mechanisms used by farmers to exercise power. Learning & Coping mechanisms, Flexible Co-production, Manageability of the Risk, Comprehensive-Association.



Conclusions

- Power dynamics**, differences in material conditions between farmers, among others also play a **key role in rural associations' participation in markets**
- Intertwining approach** is a viable approach to **trace the trajectories of power** of rural associations in markets
- intertwined interactions** gave rise to novel **power play mechanisms** to increase productive capacity, bargain power and have economic surplus from trading.

Acknowledgments

We express our gratitude to the peasants from Aija and the local team of SAMA Project. The fieldwork research was partly funded by the McKnight Foundation.

For more information about intertwining approach

