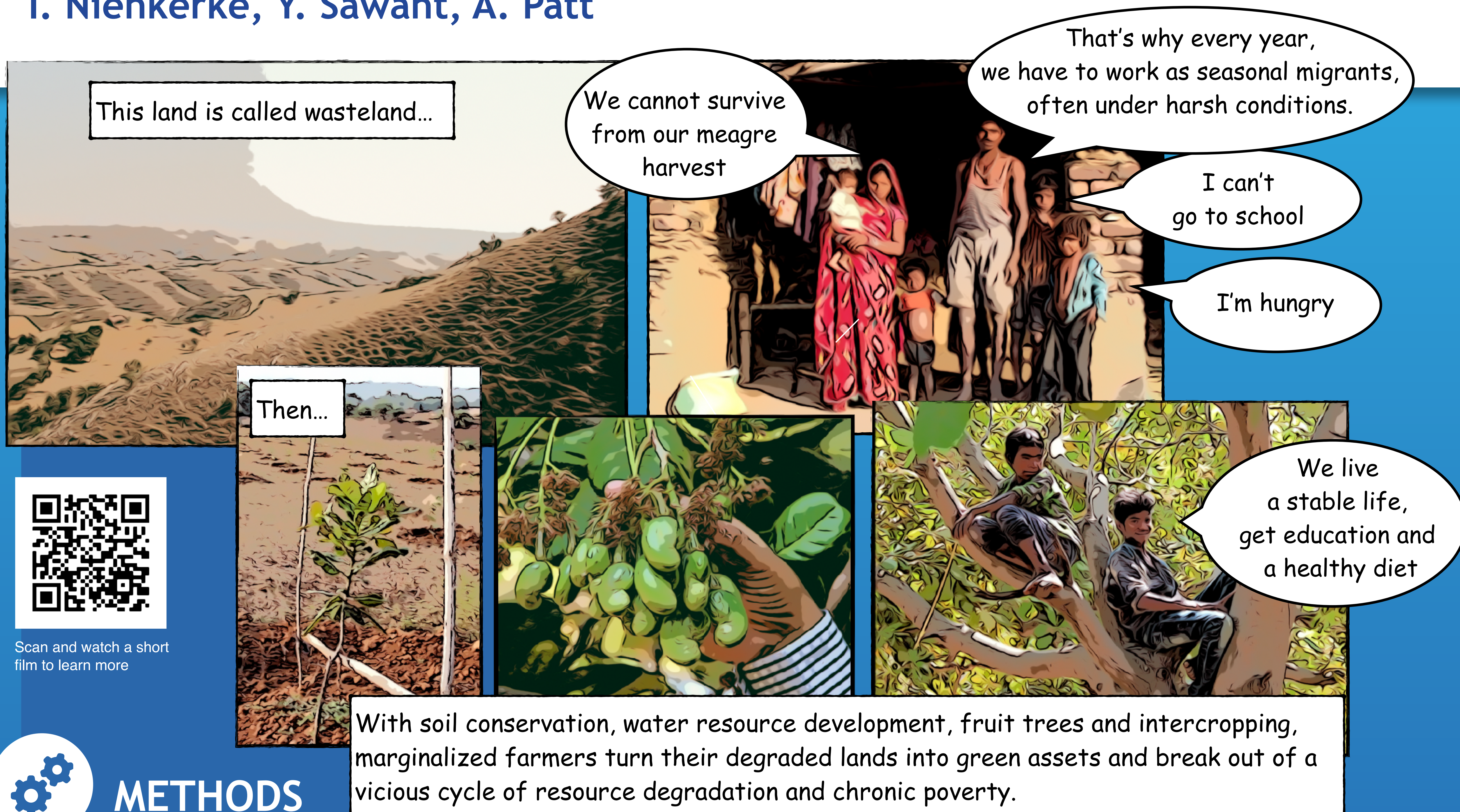


From Wasteland to Oasis **ETH** zürich

Evidence of an Agricultural Development Program

I. Nienkerke, Y. Sawant, A. Patt

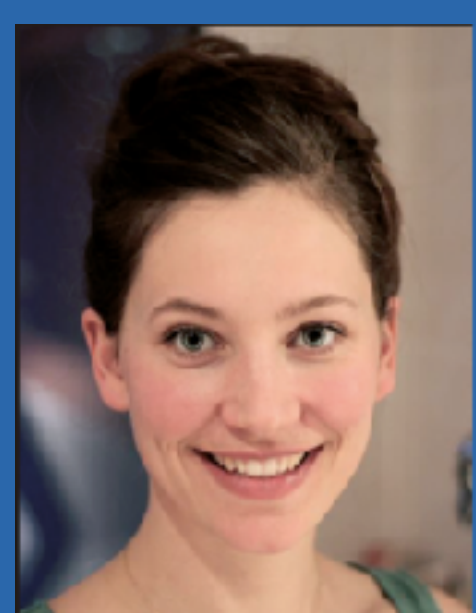


METHODS

- Survey of 2000 households randomly sampled from 200.000 participants
- Random geographic rollout of the program produced a natural experiment and gave rise to treatment and control groups

KEY-FINDINGS

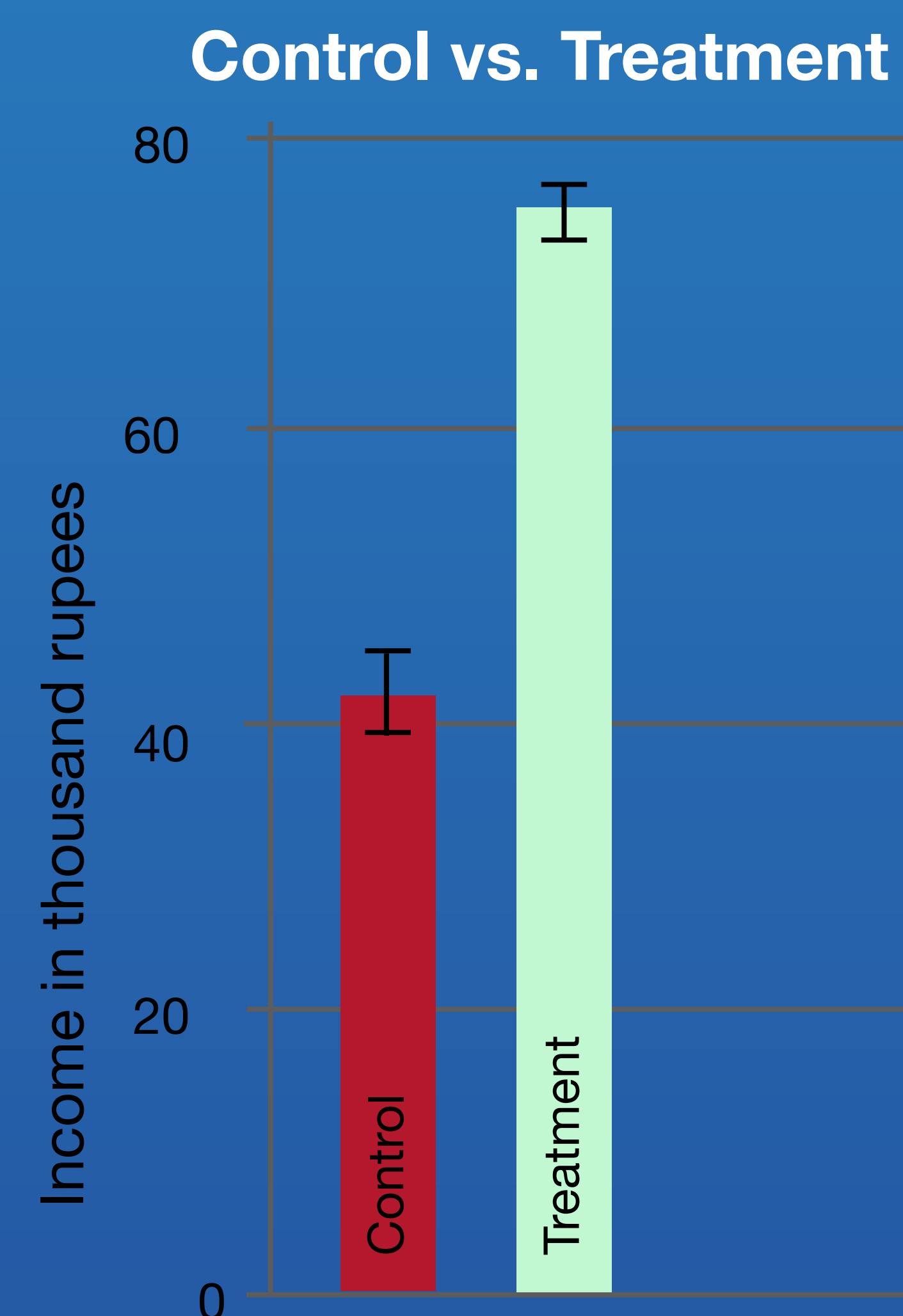
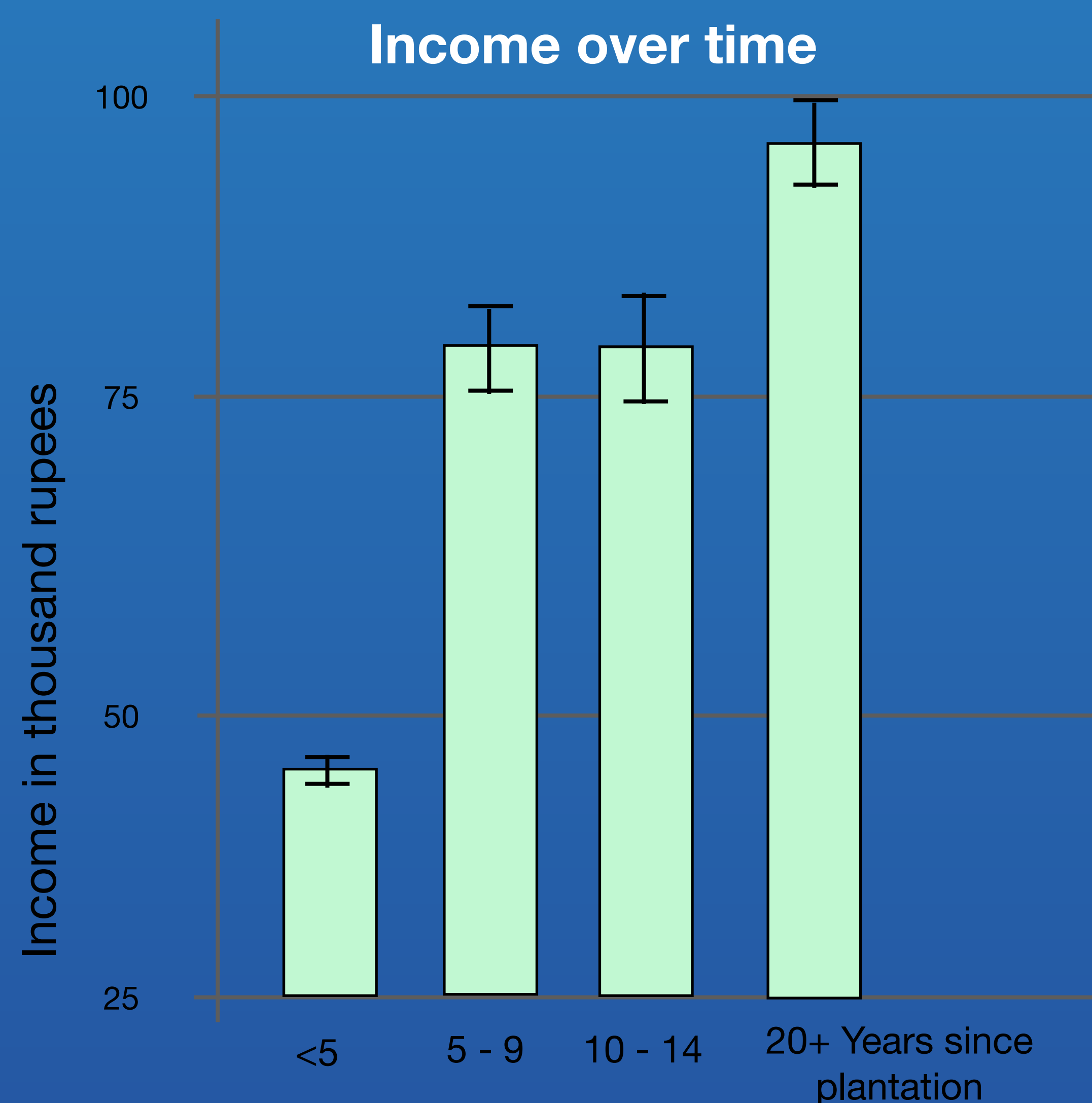
- Higher incomes, positive life changes, ecological benefits
- Degraded farmland can be transformed into green assets if poverty alleviation and environmental degradation are tackled in a holistic approach
- This presents a role model for wider replication



Inga M. Nienkerke

Environmental Systems Science
ETH Zürich

✉ inga.nienkerke@usys.ethz.ch



Transformative effects of trees on farmland and livelihoods:

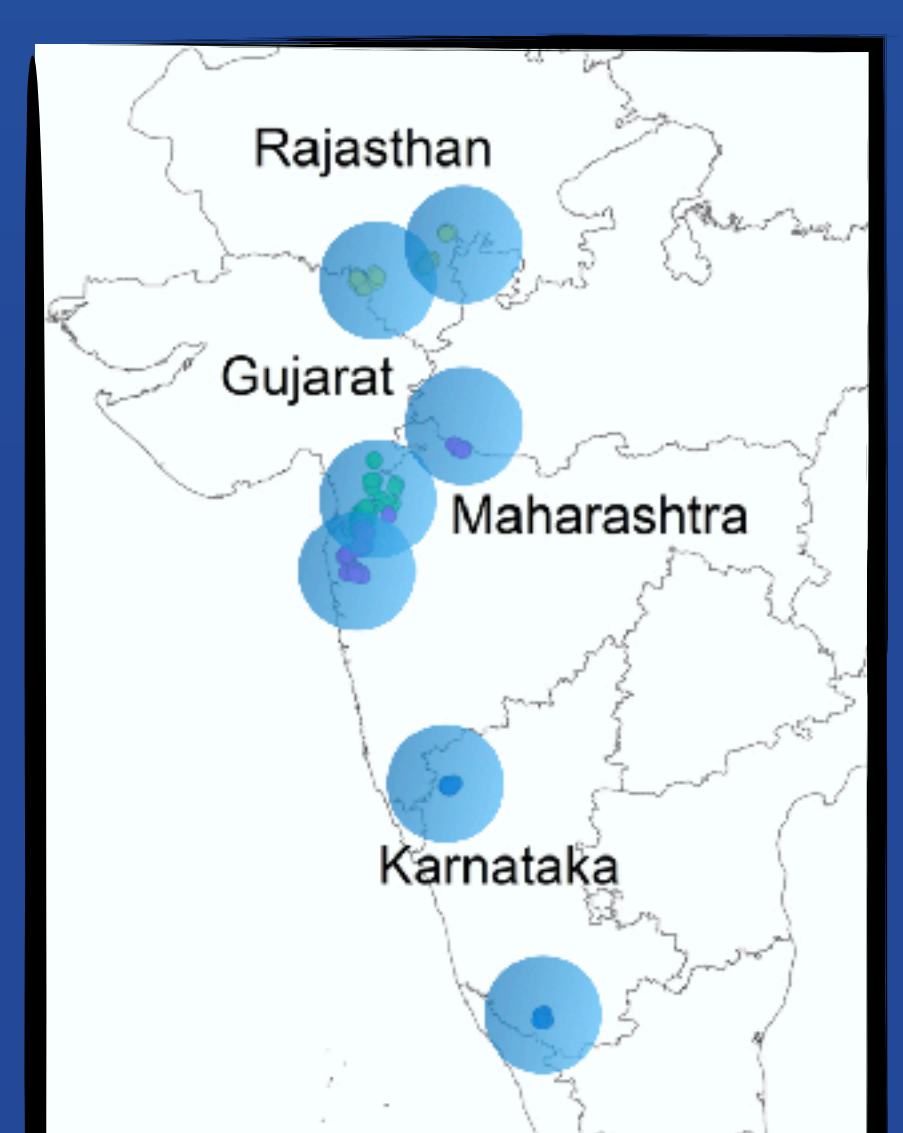
Exploited seasonal migrants ➔ agricultural entrepreneurs

Degraded wastelands ➔ enriched ecosystems

Struggle for survival ➔ stable life in dignity

Impoverished villages ➔ vibrant local economy

Nienkerke, I., Patt, A., (in press). From wasteland to oasis: Transformative effects of trees on farmland and livelihoods, *Land Degradation & Development*
DOI: 10.1002/ldr.4422



Research areas