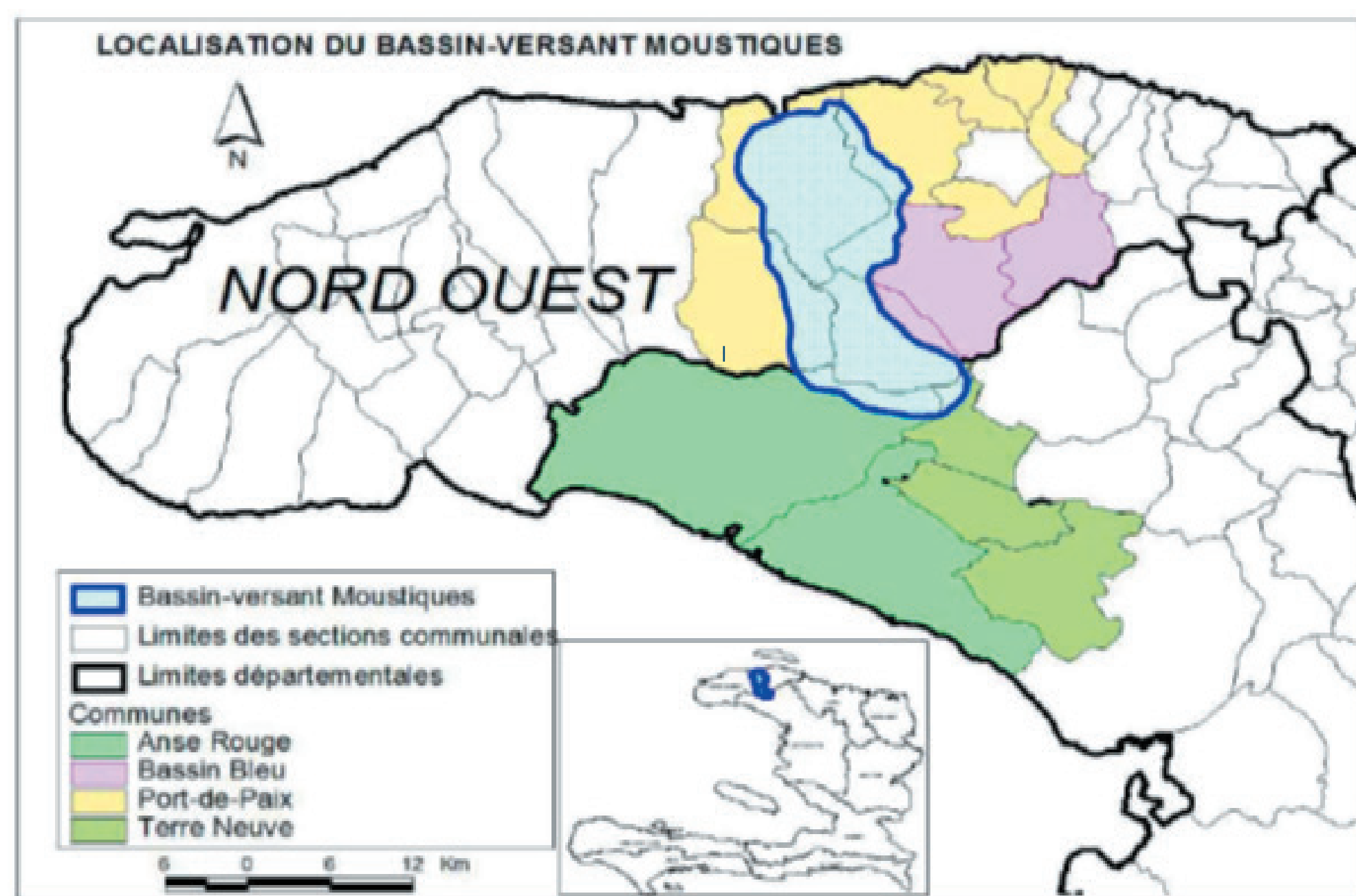




Situation



Watershed Moustiques River

- Peninsula in the northwest of Haiti
- Surface 222 km²
- Arid to semi-arid zone
- 2 seasons

Sub-watershed Matha

- Surface 50 ha
- 44 families / 300 people
- Main activity: agriculture



Issues

- Food insecurity
- Soil degradation - erosion
- Deforestation
- Hygiene & sanitation
- Natural disasters - drought

Goals

- Set up soil and water conservation structures
- Improving soil fertility
- Improving food security
- Execution by the inhabitants

Approach

- Participatory and concerted approach with all relevant actors: Catchment Committee (CBVRMED) and local ngo ODRINO
- Field visits
- Community meetings
- Sensitization of the population
- Involvement of inhabitants in activities



Activities

- Technical training
- Setting up a tree nursery
- Distribution of seedlings
- Soil conservation: digging trenches, reinforcing slopes
- Promoting kitchen gardens
- Installation of ecological latrines



Successes

- Mentality change
- Increased income
- Increased environmental awareness
- Less erodible soils
- Eradication of open air defecation
- Use of human/material resources

Constraints

- Financial dependence on an external organization
- Drought
- Ecological toilets more expensive

Lessons learned

- Choice of a small scale of intervention facilitates the development and monitoring of activities
- IWRM must start at the local level
- Awareness raising > ownership of actions
- Community involvement > sustainability of actions
- Exchange visits > great benefits
- Model site for application in wider area
- More data/quantification needed