

Participatory 3D modelling in Bonga, South-western Ethiopia

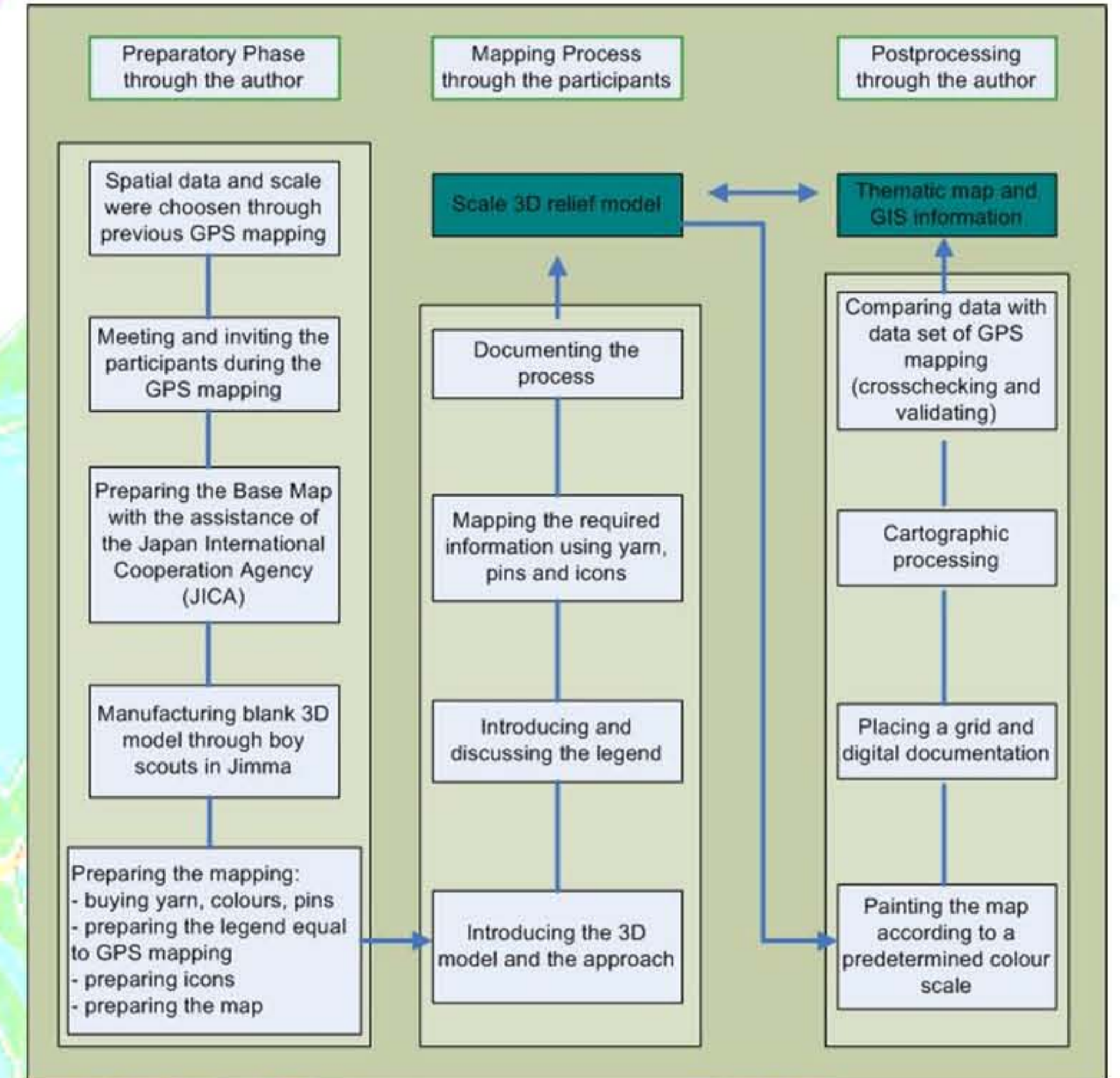
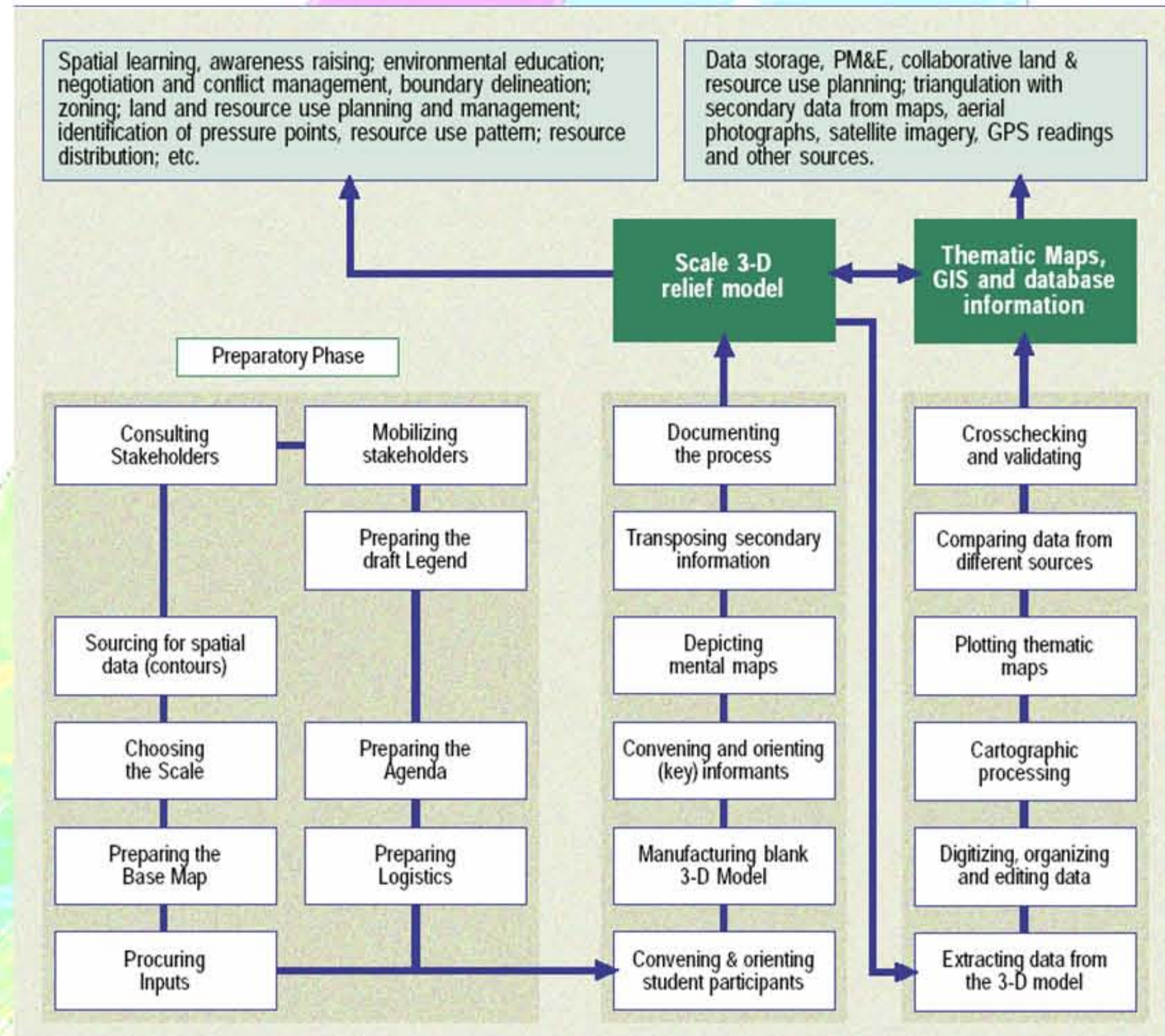
Friederike Behrens née Tästensen¹, Dr. Manfred Denich² and Prof. Dr. Michael Kleyer¹

¹ Carl-von-Ossietzky University, Oldenburg, Germany

² Center for Development Research, Bonn, Germany

One approach – two implementations

This poster presents a part of a diploma thesis conducted in the Bonga region of south-western Ethiopia. The required data were carried out through a modified participatory 3D modelling approach adapted from a publication by RAMBALDI & CALLOSA-TARR from 2002. The original 3D modelling approach basically is a Community-integrated Geographic Information System (CiGIS) (RAMBALDI & CALLOSA-TARR, 2002). Its key focus is the understanding and work of spatial data by ordinary people to create new realities.



In the context of the thesis the 3D modelling was used to gather spatial data on habitat types which were also collected through GPS mapping in the field – in order to have two comparable data sets.

The charts highlight the methodologies of each implementation, they differ especially in the preparatory phase. The identification of an error on the model by the participants is a proof of quality of their understanding of the model and thereby of the quality of the model itself.

The mapping process below shows the main steps from the blank model to the finished one.



Blank model made of cardboard layers



Discussing the model and legend



The mapping process



Using the icons in the mapping process



The coloured model with grid and north arrow



The blank model after mapping

My mapping process & lessons learnt

- Participatory modelling can be done in a week
- Consider social & political pitfalls
- Know the area you want to map
- Identify terms used in mapping and discuss them beforehand
- Have very good language skills
- Verify data in the field after the mapping
- Use icons instead of coloured yarns
- Get help to build the blank model
- Prepare the model for painting