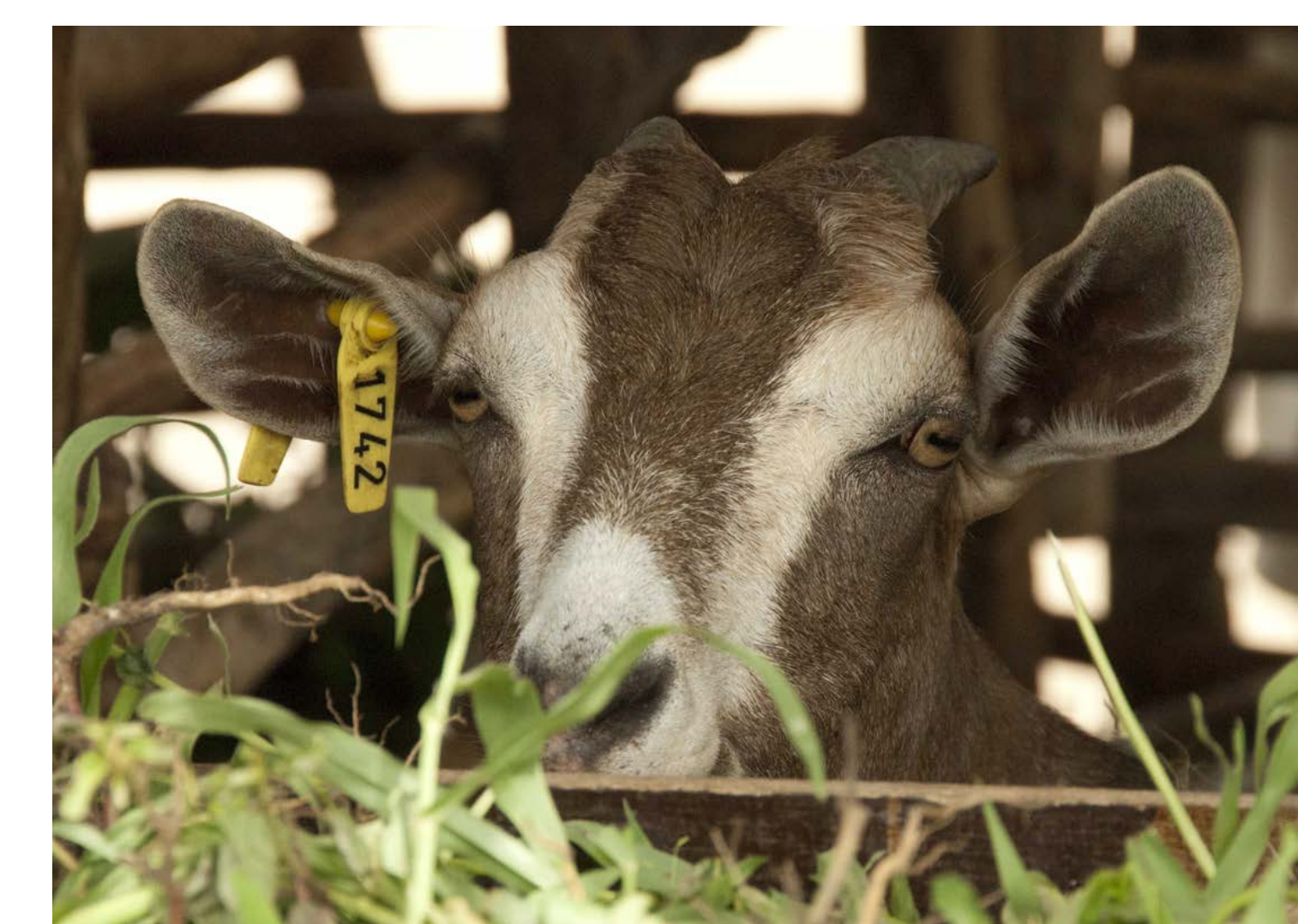


What was the impact of dairy goats distributed by the Crop-Goat-Project?

Luke Korir¹, Michael Kidoido¹, Nils Teufel¹
International Livestock Research Institute, Nairobi

Tropentag 2016 'Solidarity in a competing world - fair use of resources', BOKU Vienna, September 18-21, 2016



Introduction

Study objective

- Evaluate impacts of goat distribution on diet, income and assets using Crop-Goat-Project as a case study.

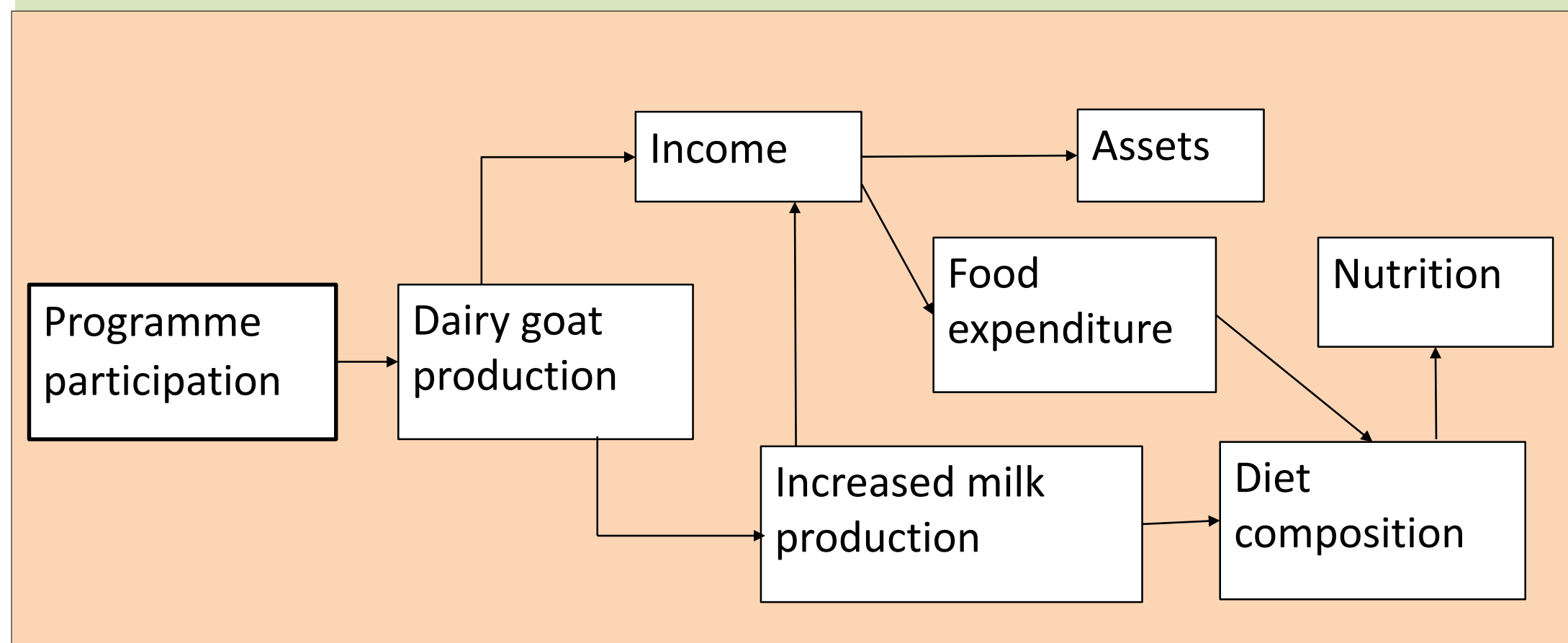
Statement of problem

- In Tanzania, most goat production is extensive and aimed at selling live animals with limited direct impact on food security and nutrition.

Crop-Goat-Project – objective & activities

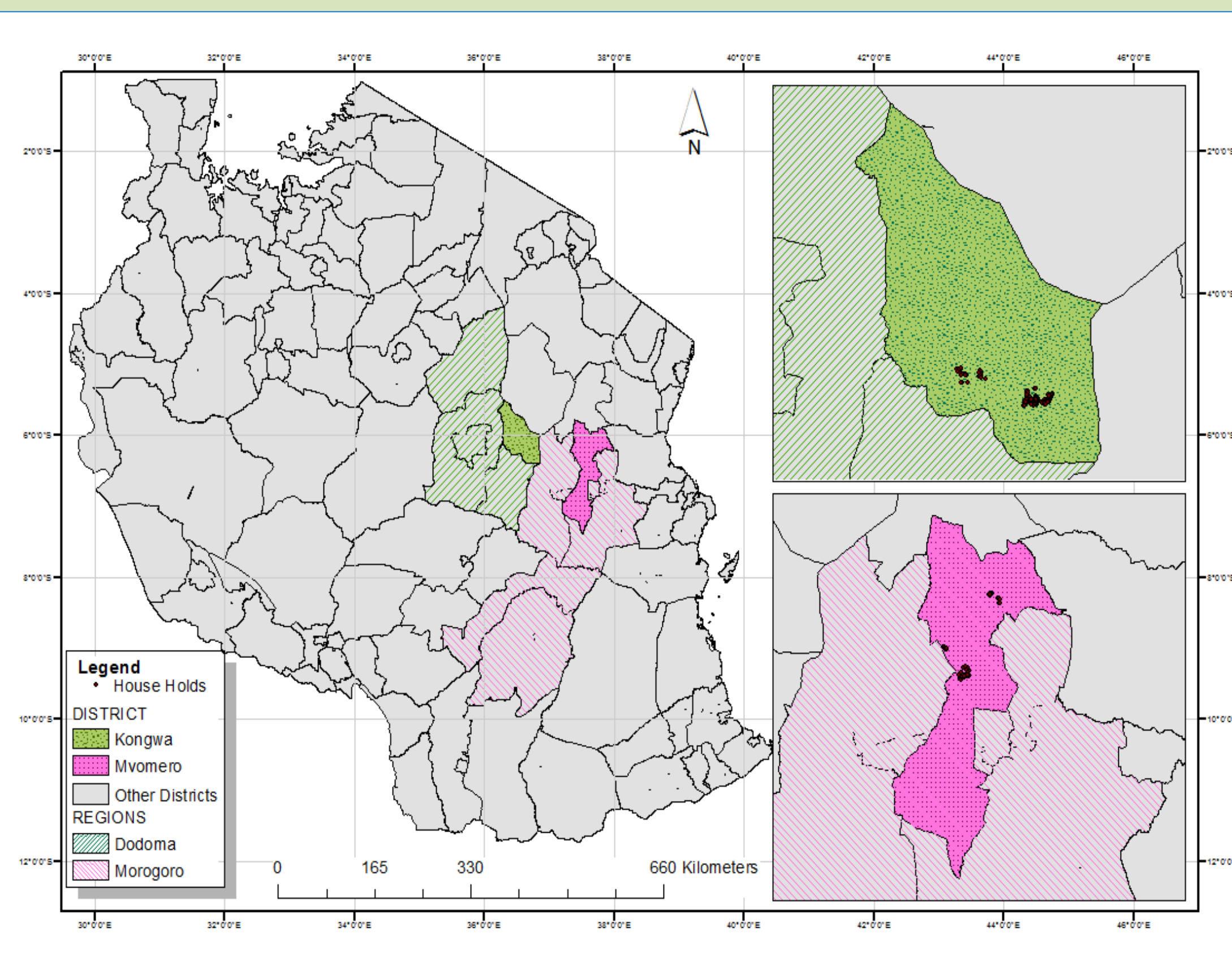
- Support poor farmers through dairy goats and root crops (with the opportunity for synergies)
- Transfer of 229 pure-bred dairy goats to 108 households in 4 villages in Morogoro region, central Tanzania
- Introduction of improved cassava and sweet potato varieties and extension services

Conceptual framework



Source: Adapted from Masset *et al.* 2012

Study sites



Methods

Data

- 2 rounds of household survey including 373 hh
 - before beneficiary identification, 2011
 - after 2 years of production, 2014
- 200 hh considered for impact assessment from beneficiary and longlist households

Statistical comparison

- Comparison of sample means of treated and untreated samples at base-line and at the end-line by independent t-test.

Econometric analysis

Difference-in-Difference (DD) Approach

$$y_{it} = \alpha + \beta T_{it} * t + \tau T_{it} + \gamma t + \theta x_{it} + \varepsilon_{it} \dots\dots\dots (1)$$

Where:
i = household,
t = time period (*t* = 0 for 2011 and *t* = 1 for 2014),
y = the outcome variables (food consumption, income, assets),
T = Treatment variable; *T* = 0 for non participant and *T* = 1 for participant)
x = other control variable (Includes: gender, age, education level, and dependence ratio, use of credit and farm diversity index).
 τ = controls for initial differences between the two groups
 γ = controls for trends over time
 β = provides the estimate of Average Treatment Effect (ATE).
 θ = controls for effect of household observable characteristics

- Poisson regression for count outcomes: dietary diversity and frequency of dairy product consumption.
- Extended on DD model with propensity score weighted regression:

$$y_{it} = \alpha + \beta T_{it} * t + \tau T_{it} + \gamma t + \varepsilon_{it} \dots\dots\dots (2)$$

Where : $E(\varepsilon_i | T_{i1}) = 0$,
 $\hat{P}(X)$ = propensity score, ATT is estimated with weights of 1 for treated observations and $\hat{P}(X)/(1 - \hat{P}(X))$ for controls.

Further reading

Jodlowski, M., Winter-nelson, A., & Baylis, K. (2016). Milk in the Data : Food Security Impacts from a Livestock Field Experiment in Zambia. *World Development*, 77, 99–114. <http://doi.org/10.1016/j.worlddev.2015.08.009>.

Kafle, K., Winter-Nelson, A., & Goldsmith, P. (2016). Does 25 cents more per day make a difference? The impact of livestock transfer and development in rural Zambia. *Food Policy*, 63, 62–72. <http://doi.org/10.1016/j.foodpol.2016.07.001>.

Masset E., Haddad L., Cornelius A. & Isaza-Castro J. (2012) Effectiveness of agricultural interventions that aim to improve nutritional status of children: systematic review. *British Medical Journal* 344, d8222. doi:10.1136/bmj.d8222.

Results

Statistical comparison

- At base-line, children in treated households had higher food consumption scores than in control hh.
- At end line, children and adults in treated households had higher food consumption and dairy product consumption than in control hh.

Difference in Difference regression

Dairy goats increased:

- food consumption score of respondents by 20%.
- frequency of dairy product consumption of respondents and children by 100% and 67% respectively per week.

No impacts on diet diversity, income and assets detected.

Propensity score weighted regression

Dairy goats increased

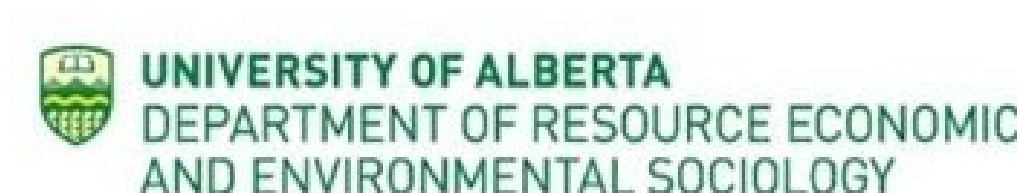
- frequency of dairy product consumption of respondent by 2 times per week.

No impacts on diet diversity, income and assets detected

Conclusion

- Dairy goats introduced in households that rely on crop based diets improves dairy product consumption
- The pathway of dairy goat benefits is through direct milk consumption, and not through income.
- In the medium term there is no benefit to non-dairy goat keeping households
- The poorest are excluded because of inability to raise vulnerable pure-bred dairy goats
- Dual purpose goat breeds would require less maintenance and labour.

Luke Korir
 l.korir@cgiar.org • Box 30709 Nairobi Kenya • +254 20 422 3000
 Nairobi, Kenya • ilri.org
 This project was funded by IDRC



We thank all donors that globally support our work through their contributions to the CGIAR system. This poster is licensed for use under the Creative Commons Attribution 4.0 International Licence (September 2016)